

May 11, 2026

**The Manager – Listing
National Stock Exchange of India Limited
(Scrip Symbol: PVRINOX)**

**The Manager – Listing
BSE Limited
(Scrip Code: 532689)**

Sub: 4th Quarter & FY 2025-26 - Investor Presentation

Dear Sir/Madam,

Please find attached presentation on Investor update for the Fourth Quarter & Financial Year ended 31st March, 2026.

This is for your information and to all concerned.

Yours sincerely,
For **PVR INOX Limited**

**Murlee Manohar Jain
SVP - Company Secretary
& Compliance Officer**

Encl: A/a.



PVR ★ **INOX**
May 11th, 2026

INVESTOR UPDATE
Q4 & 12M FY'26

DISCLAIMER

This presentation has been prepared for general information purposes in respect of PVR INOX Limited (“Company”) together with its subsidiaries and joint venture (together, with the “Company”, the “Group”) only, without regard to any specific objectives, suitability, financial situations and needs of any particular person and does not constitute any recommendation or form part of any offer or invitation, directly or indirectly, in any manner, or inducement to sell or issue, or any solicitation of any offer to purchase or subscribe for, any securities of the Company in any jurisdiction, nor shall it or any part of it or the fact of its distribution form the basis of, or be relied on in connection with, any contract or commitment therefor. This presentation does not solicit any action based on the material contained herein. Nothing in this presentation is intended by the Group to be construed as legal, accounting or tax advice.

This presentation has not been approved and will not or may not be reviewed or approved by any statutory or regulatory authority in India or by any Stock Exchange in India.

This presentation contains certain forward-looking statements relating to the business, financial performance, strategy and results of the Group and/ or the industry in which it operates. Forward-looking statements are statements concerning future circumstances and results, and any other statements that are not historical facts, sometimes identified by the words including, without limitation “believes”, “expects”, “predicts”, “intends”, “projects”, “plans”, “estimates”, “aims”, “foresees”, “anticipates”, “targets”, and similar expressions. The forward-looking statements, including those cited from third party sources, contained in this presentation are based on numerous assumptions and are uncertain and subject to risks. A multitude of factors including, but not limited to, changes in demand, competition and technology, can cause actual events, performance or results to differ significantly from any anticipated development. Neither the Group nor its affiliates or advisors or representatives nor any of its or their parent or subsidiary undertakings or any such person's officers or employees guarantees that the assumptions underlying such forward-looking statements are free from errors nor does either accept any responsibility for the future accuracy of the forward-looking statements contained in this presentation or the actual occurrence of the forecasted developments. Forward-looking statements speak only as of the date of this presentation and are not guarantees of future performance. As a result, the Group expressly disclaims any obligation or undertaking to release any update or revisions to any forward-looking statements in this presentation as a result of any change in expectations or any change in events, conditions, assumptions or circumstances on which these forward looking statements are based. Given these uncertainties and other factors, viewers of this presentation are cautioned not to place undue reliance on these forward-looking statements. Certain numbers in these presentations and materials have been subject to routine rounding off and accordingly figures shown as total in tables and diagrams may not be an arithmetic aggregation of the figures that precede them.

The information contained in these presentations and materials are only current as of the dates specified herein and have not been independently verified. None of the Group, its directors, promoters or affiliates, nor any of its or their respective employees, advisers or representatives or any other person accepts any responsibility or liability whatsoever, whether arising in tort, contract or otherwise, for any errors, omissions or inaccuracies in such information or opinions or for any loss, cost or damage suffered or incurred howsoever arising, directly or indirectly, from any use of this presentation or its contents or otherwise in connection with this presentation, and makes no representation or warranty, express or implied, for the contents of this presentation including its accuracy, fairness, completeness or verification or for any other statement made or purported to be made by any of them, or on behalf of them, and nothing in this presentation or at this presentation shall be relied upon as a promise or representation in this respect, whether as to the past or the future. Past performance is not a guide for future performance. The information contained in this presentation is current, and if not stated otherwise, made as of the date of this presentation. The Group undertakes no obligation to update or revise any information in this presentation as a result of new information, future events or otherwise. Any person/ party intending to provide finance/ invest in the shares/ businesses of the Group shall do so after seeking their own professional advice and after carrying out their own due diligence procedure to ensure that they are making an informed decision.

DISCLAIMER

This presentation is not a prospectus, a statement in lieu of a prospectus, an offering circular, an advertisement or an offer document under the Companies Act, 2013, as amended, the Securities and Exchange Board of India (Issue of Capital and Disclosure Requirements) Regulations, 2018, as amended, or any other applicable law in India.

This presentation is strictly confidential and may not be copied or disseminated, reproduced, re-circulated, re-distributed, published or advertised in any media, website or otherwise, in whole or in part, and in any manner or for any purpose. Any unauthorized use, disclosure or public dissemination of information contained herein is prohibited. No person is authorized to give any information or to make any representation not contained in or inconsistent with this presentation and if given or made, such information or representation must not be relied upon as having been authorized by any person. Failure to comply with this restriction may constitute a violation of the applicable securities laws. Accordingly, any persons in possession of the aforesaid should inform themselves about and observe any such restrictions. By reviewing this presentation, you agree to be bound by the foregoing limitations. You may not repackage or sell the presentation. Information contained in a presentation hosted or promoted by the Group is provided “as is” without warranty of any kind, either expressed or implied, including any warranty of fitness for a particular purpose.

By accessing this presentation, you accept this disclaimer and any claims arising out of or in connection with this presentation shall be governed by the laws of India and only the courts in Gurugram, India, and no other courts shall have jurisdiction over the same.

01	INDUSTRY UPDATE	5
02	Q4 & FY'26 RESULTS HIGHLIGHTS	9
03	RESULTS ANALYSIS	14
04	SCREEN GROWTH UPDATE	19
05	CASH FLOW AND BALANCE SHEET	25
06	ANNEXURES	29
07	CONTENT LINEUP	34

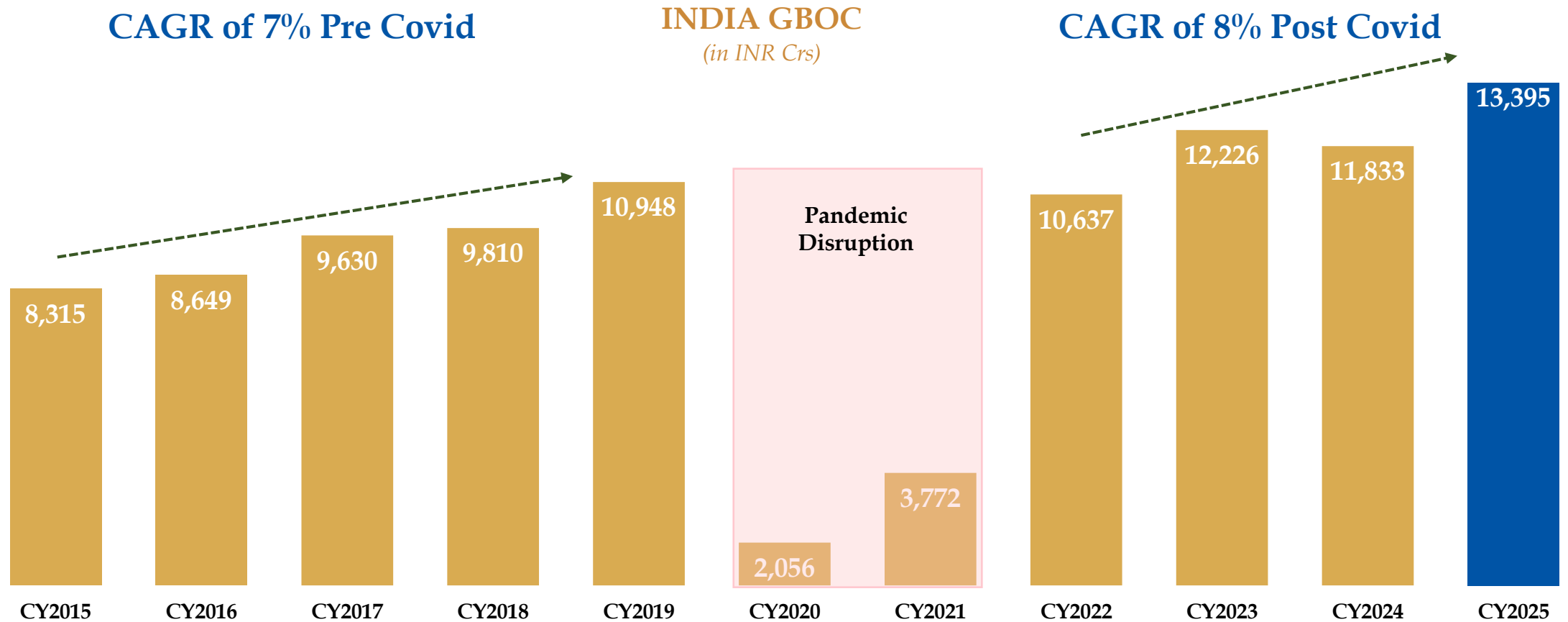


THE REVENANT

INDUSTRY UPDATE

India Box Office: A Clear Long Term Growth Story

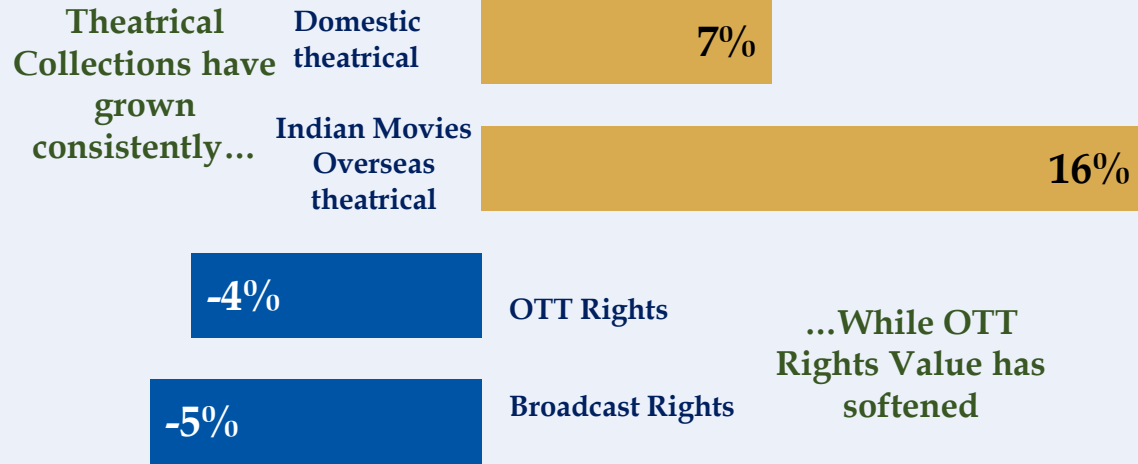
STRONG STRUCTURAL DEMAND FOR OUT-OF-HOME ENTERTAINMENT IN INDIA



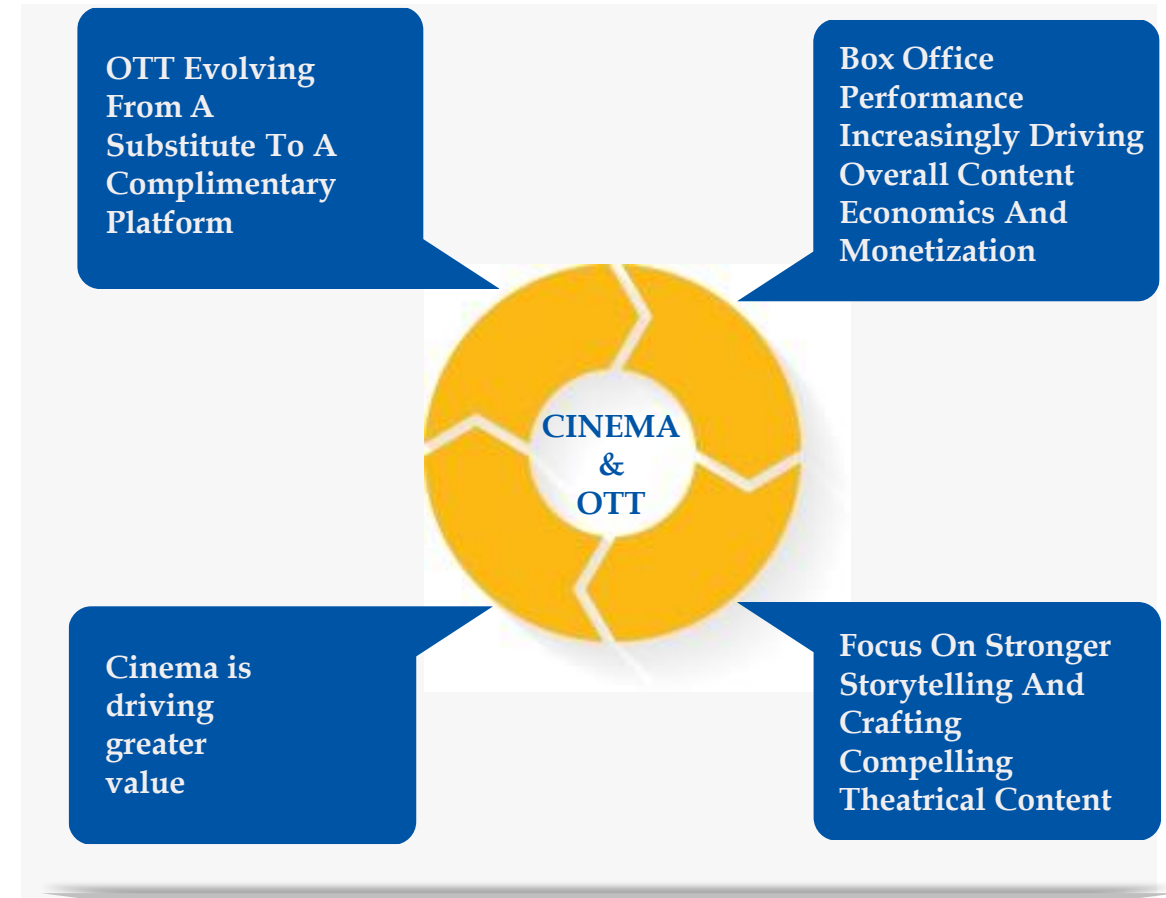
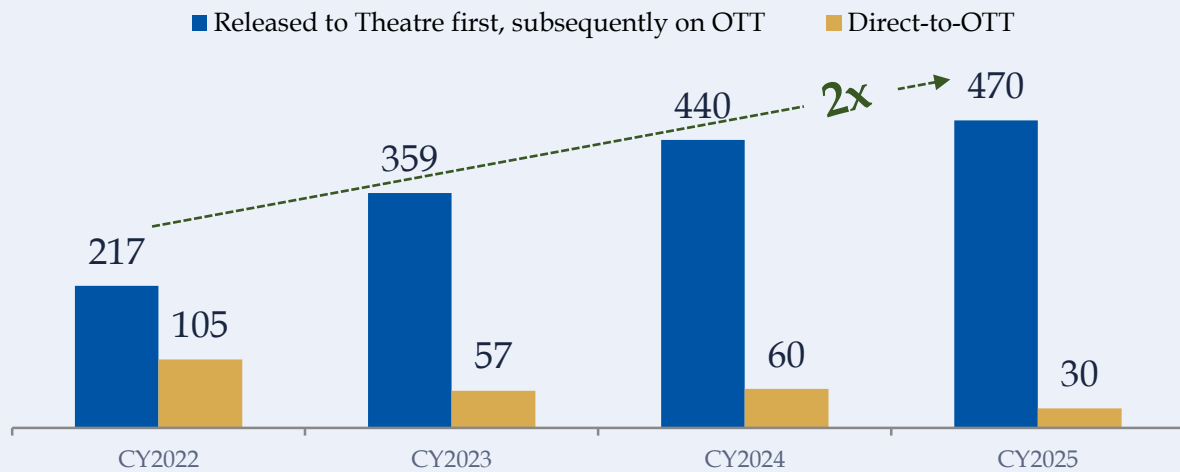
INDIA BOX OFFICE HAS CONSISTENTLY GROWN AT 7-8% OVER LONG TERM

India Industry Dynamics Favor Theatres

India Filmed Entertainment Revenue CAGR (2022 - 2025)



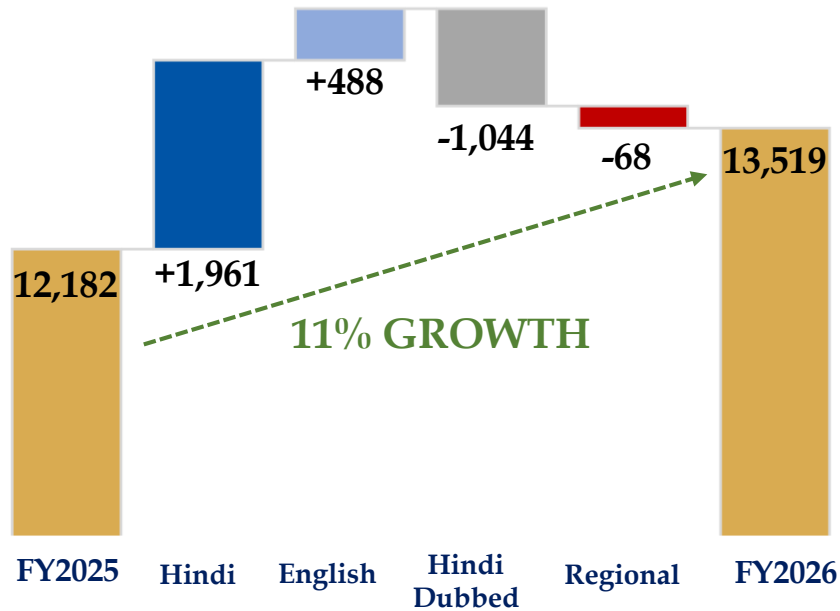
Releases Shifting Back To Theatrical First, Multi Platform Model



CINEMA SETS THE QUANTITATIVE & QUALITATIVE BENCHMARK FOR A FILM

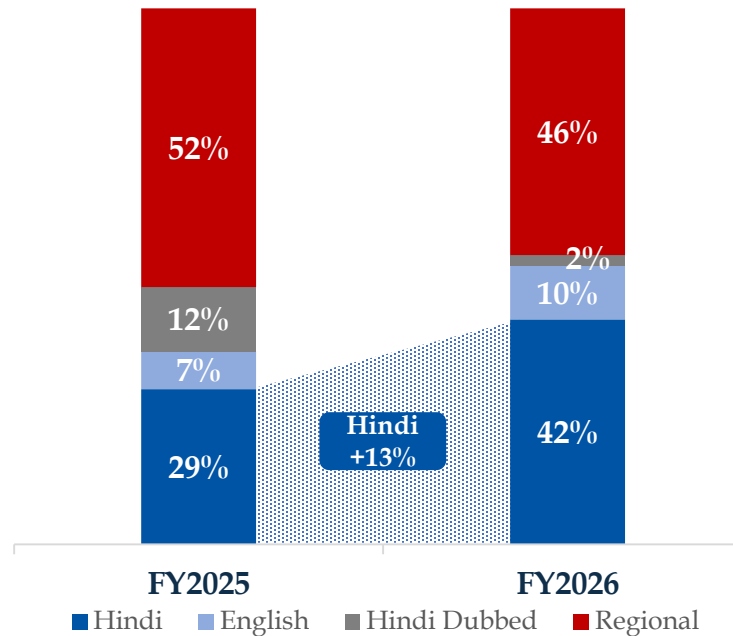
India Box Office FY26: Broader & More Balanced Growth

India GBOC Up 11% to INR 13,519 Cr in FY'26

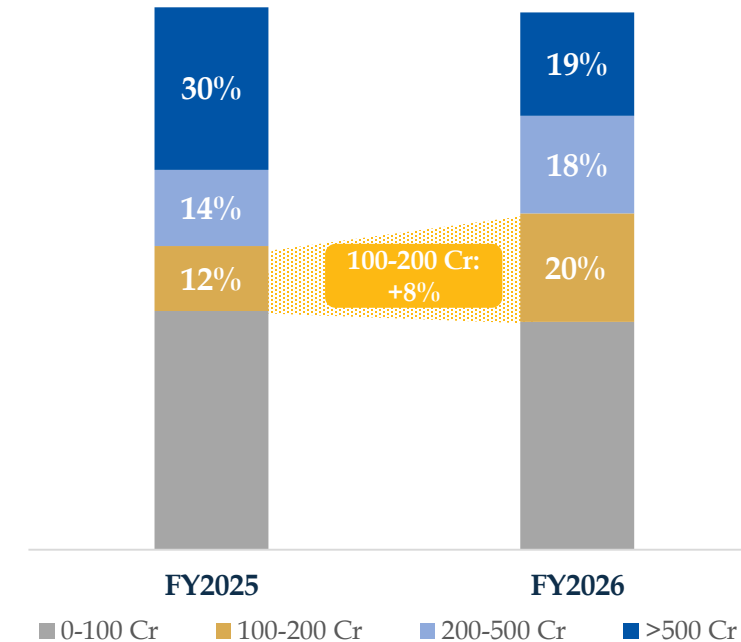


All Figures in INR Cr
Chart Not to Scale

Original Hindi Best Ever Performance



Mid Budget Films Make A Comeback



- **55% Growth in Hindi GBOC** driven by consistent Bollywood performance
- **54% Growth in English GBOC** as Hollywood releases normalize post strike

- **Compelling Hindi Content** leading to increase in Original Hindi Share to **42%**

- **Share of 100-200 Cr. GBOC Films** increased from **12% to 20%**
- **Less reliance on Mega Blockbusters** as its share drops from **30% to 19%**



Q4 & FY'26 RESULTS HIGHLIGHTS

FY'26: Record Breaking Performance

KEY MILESTONES



**HIGHEST
Revenue**

INR 67,426 Mn

Ever



**HIGHEST
EBITDA¹**

INR 9,680 Mn

Ever



**HIGHEST
PAT²**

INR 3,868 Mn

Ever



**HIGHEST
ATP & SPH**

280 | 147

Ever



**NEGLIGIBLE
Net Debt**

INR 1,619 Mn

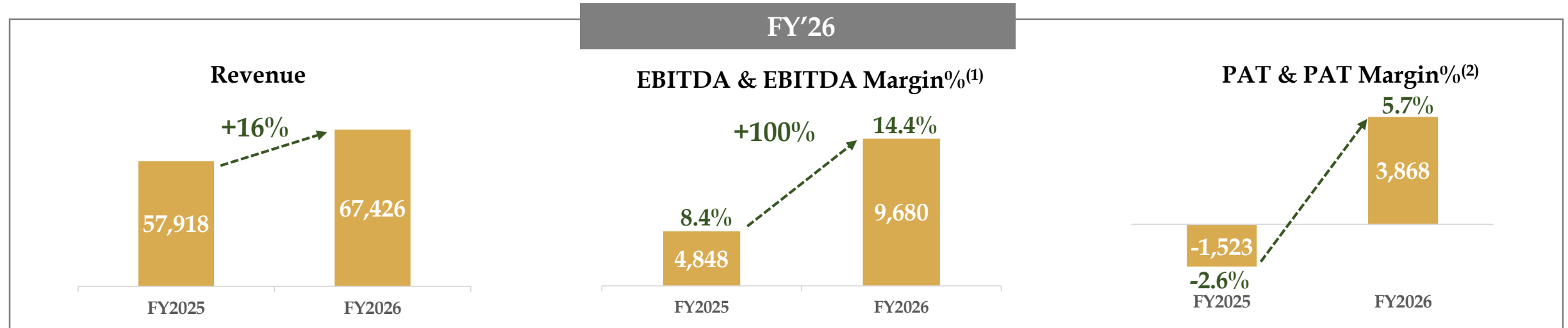
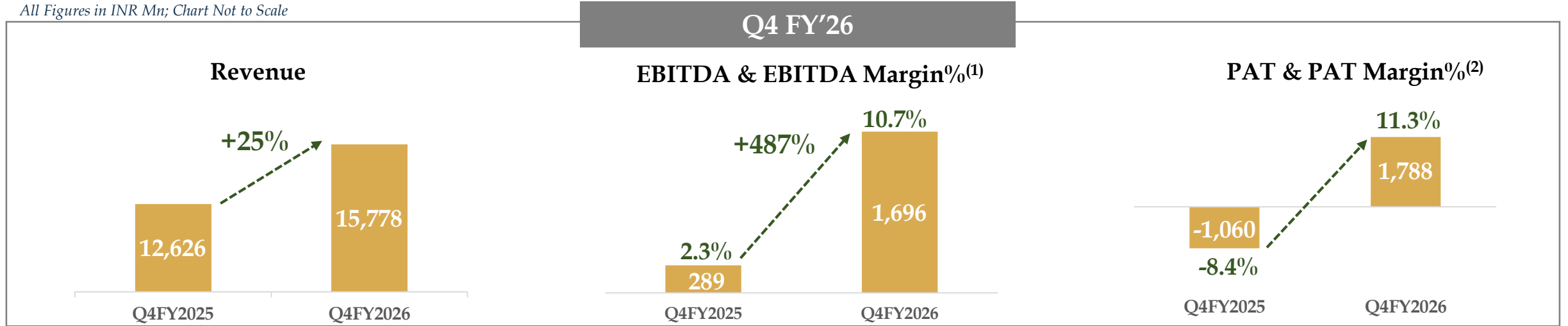
Towards +ve Net Cash

**BEST EVER OPERATING AND FINANCIAL PERFORMANCE - REINFORCING OUR LEADERSHIP IN
INDIAN CINEMA EXHIBITION**

Note: Above Financial Numbers are after excluding the Impact of IND AS 116 - 'Leases'
(1) EBITDA is before exceptional items (2) PAT includes gains on disposal of subsidiary 'Zea Maize Pvt. Ltd'(4700 BC)

Key Financial Highlights

All Figures in INR Mn; Chart Not to Scale



FY'26 REVENUE UP 16%, EBITDA DOUBLED, PAT TURNS POSITIVE

Note: Above Financial Numbers are after excluding the Impact of IND AS 116 'Leases'

(1) EBITDA is before exceptional items (2) PAT includes gain on disposal of subsidiary 'Zea Maize Pvt. Ltd'. PAT from continuing operations is INR 75 Mn for Q4FY'26 and INR 2,306 Mn for FY'26.

Key Operating Highlights

Particulars		Q4, FY'26	Q4, FY'25	Y-o-Y Growth	12M, FY'26	12M, FY'25	Y-o-Y Growth
Cinema Count (at the end of period) ⁽¹⁾		359	349	2.9% ↑	359	349	2.9% ↑
Screen Count (at the end of period) ⁽¹⁾		1,798	1,723	4.4% ↑	1,798	1,723	4.4% ↑
Admissions	Mns	31.0	30.5	1.5% ↑	150.1	136.9	9.6% ↑
Occupancy	%	23.9%	20.5%	338 bps ↑	26.2%	23.0%	312 bps ↑
Avg. Ticket Price (ATP)	INR	315	258	22.4% ↑	280	259	8.1% ↑
F&B Spend per Head (SPH)	INR	165	125	32.3% ↑	147	134	9.5% ↑

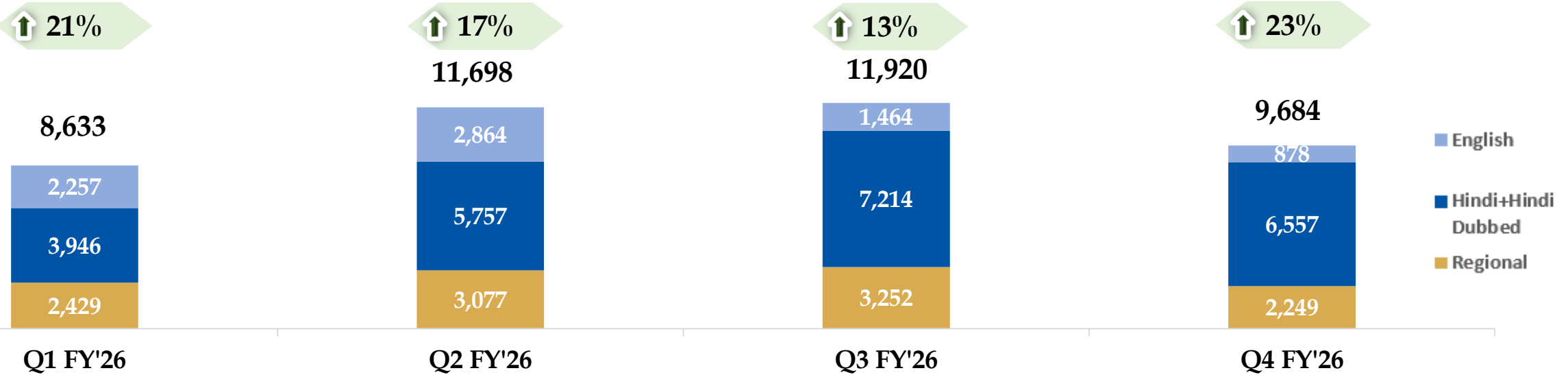
FY'26 HIGHEST- EVER ATP AT INR 280 AND F&B SPH AT INR 147; ADMISSIONS UP 10%

(1) Includes 71 management screens across 19 cinemas which are managed under a 'Management fee' model. The above table excludes Operating KPIs of management properties

PVRINOX GBOC: FY'26 Witnessed Consistent YoY Growth Across Quarters

All Figures in INR Mn

YoY Growth%



Sitaare Zameen Par
(Hindi)
PVRINOX | Industry
960 Mn | **2,006 Mn**



Saiyaara
(Hindi)
PVRINOX | Industry
1,470 Mn | **3,990 Mn**



Dhurandhar
(Hindi)
PVRINOX | Industry
3,280 Mn | **8,440 Mn**



Dhurandhar: The Revenge
(Hindi)
PVRINOX | Industry
3,520 Mn | **9,220 Mn**



Raid 2
(Hindi)
PVRINOX | Industry
840 Mn | **2,065 Mn**



Mahavtaar Narsimha
(Hindi)
PVRINOX | Industry
1,140 Mn | **3,010 Mn**



Kantara: The Legend
(Kannada)
PVRINOX | Industry
2,070 Mn | **7,240 Mn**



Border 2
(Hindi)
PVRINOX | Industry
910 Mn | **3,790 Mn**



Housefull 5
(Hindi)
PVRINOX | Industry
721 Mn | **2,185 Mn**



War 2
(Hindi)
PVRINOX | Industry
840 Mn | **2,830 Mn**



Avatar: Fire and Ice
(English)
PVRINOX | Industry
830 Mn | **1,720 Mn**



Mana Shankara Vara Prasad Guru
(Telugu)
PVRINOX | Industry
280 Mn | **2,550 Mn**

Note: Collections are for the Quarter. Source: Ormax Media

INVESTOR UPDATE : Q4 & 12M FY'26



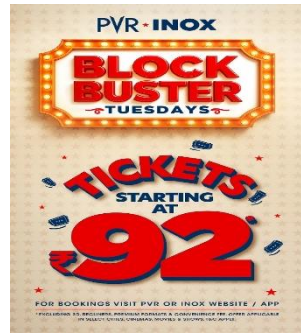
RESULTS ANALYSIS

Initiatives to Boost Revenue: *Driving Footfalls through Experience and Occasion*



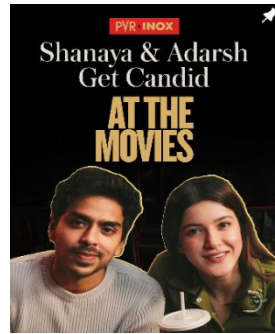
Targeted Promotions

Weekday deals across segments



Innovative Movie Marketing

Creating Buzz



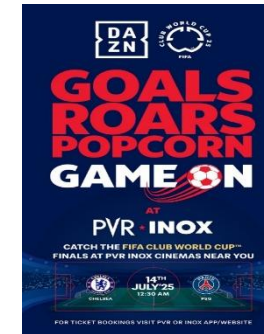
Film Festivals & Curated Shows

Broaden Offering



Alternate Content

Use Of Cinema Beyond Showcasing



F&B Innovation & Promotion



Particulars (INR Mn)	Q4, FY'26	Q4, FY'25	Y-o-Y Growth	12M, FY'26	12M, FY'25	Y-o-Y Growth
Weighted Average Screens ⁽¹⁾	1,721	1,688	2.0%	1,703	1,701	0.1%
Sale of Movie Tickets	8,185	6,447	27.0%	35,301	29,549	19.5%
Sale of Food & Beverages	4,820	3,612	33.4%	20,884	17,470	19.5%
Advertisement Income	1,104	962	14.8%	4,636	4,475	3.6%
Convenience Fees	579	442	31.0%	2,410	2,111	14.2%
Other Operating Income ^{(2),(3)}	785	836	-6.1%	3,231	3,394	-4.8%
Other Income ⁽⁴⁾	305	327	-6.7%	964	919	4.9%
Total Income	15,778	12,626	25.0%	67,426	57,918	16.4%

Note: Above financial numbers are after excluding the impact of Ind AS 116 - 'Leases'

(1) Weighted average screens has been calculated basis the actual no. of days of operations of each cinema during the period, excluding 71 management screens across 19 cinemas

(2) Decrease in Other Operating Income in Q4FY'26 is due to decrease on account of Income from Film Distribution from INR 548 Mn to INR 525 Mn & Decrease in VPF income from INR 161 Mn to INR 145 Mn

(3) Decrease in Other Operating Income in FY'26 is primarily due to decrease on account of Income from Film Distribution from INR 2,364 Mn to INR 2,224 Mn

(4) Due to reversal of Old Provision in Q4FY'25, Other Income in Q4FY'25 is higher than Q4FY'26

Expense Analysis

Particulars (INR Mn)	Q4, FY'26	Q4, FY'25	Y-o-Y Growth	12M, FY'26	12M, FY'25	Y-o-Y Growth
Weighted Average Screens	1,721	1,688	2.0%	1,703	1,701	0.1%
<u>Variable Cost</u>						
FHC (%)	45.4%	42.6%	279 bps	45.4%	44.6%	76 bps
COGS (%)	22.4%	25.1%	-263 bps	22.5%	24.9%	-241 bps
<u>Fixed Cost</u>						
Rent ⁽¹⁾	3,288	3,070	7.1%	13,055	12,358	5.6%
CAM	955	903	5.8%	3,773	3,632	3.9%
Personnel	1,778	1,615	10.1%	7,063	6,540	8.0%
Electricity & Water / Utilities	828	835	-0.8%	3,809	3,938	-3.3%
Other Expenses ex Movie Dist., Print	2,021	1,900	6.4%	7,589	7,192	5.5%
Total Fixed Expenses (ex Movie Distribution)	8,870	8,323	6.6%	35,289	33,660	4.8%
Movie Dist., Print charges ⁽²⁾	624	584	6.8%	3,160	3,281	-3.7%
Total Fixed Expenses (including Movie Dist.)	9,494	8,907	6.6%	38,449	36,941	4.1%

Consolidated Financials

Note: Above financial numbers are after excluding the impact of Ind AS 116 - 'Leases'

(1) Fixed Rent Escalation in Q4 FY'26 and in FY26 was 5.6% and 3.2%, respectively. The balance increase was on account of increase in variable rental.

(2) Expenses relating to Distribution of movies

		FY'20	6 Year CAGR	FY'26	
		PVR + INOX Proforma		PVR + INOX	
On per screen basis (INR mn)					
Fixed Costs <i>(excluding Rent & CAM)</i>	Weighted Average Screens	1,371	4%	1,703	
	Manpower Cost	5.5	-1%	5.2	
	Total Headcount	24,285	15% reduction over 6 years	20,659	
	Total Headcount per screen	17.7	32% reduction over 6 years	12.1	
	Utilities (Electricity & Water)	2.3	-1%	2.2	
	Other Overheads	3.8	-2%	3.4	
	Fixed Cost⁽²⁾ / Screen	11.7	-1%	10.8	
	Occupancy Cost	Rent	6.2	4% ⁽¹⁾	7.7
		CAM	1.6	6% ⁽¹⁾	2.2
	Total Fixed Cost⁽²⁾ / Screen		19.4	1%	20.7

(1) In line with contractual Rent & CAM escalation terms

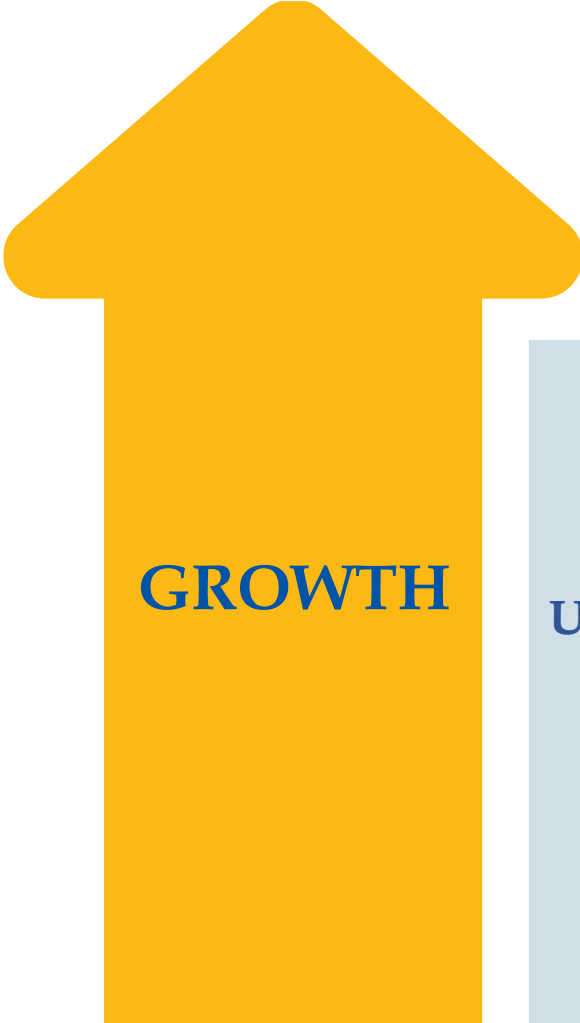
(2) Excluding Movie Distribution and Print charges

SUSTAINED COST DISCIPLINE HAS HELD FIXED COST NEARLY FLAT OVER 6 YEARS, EVEN AS CPI ROSE ~37%

Note: Above financial numbers are after excluding the impact of Ind AS 116 - 'Leases'



SCREEN GROWTH UPDATE



01

Accelerate Growth in Underpenetrated South Indian Markets

>40% NEW SCREEN ADDITIONS IN SOUTH

02

Capital light Expansion - Asset Light and FOCO

MAJORITY NEW SCREENS TO BE CAPITAL LIGHT

03

Expand in tier 2 & tier 3 cities

AFFORDABLE OFFERING

04

Increase premium formats share

DIFFERENTIATED EXPERIENCE

FY'26 Screen Additions: Tilted to South

#	CINEMAS OPENED IN Q1 FY'26	OPENING DATE	SCREENS
1.	PVR ELAN MIRACLE 84, GURGAON	25-APR-25	6
2.	PVR ZORA MALL, RAIPUR	25-APR-25	5
3.	PVR KA MALL, JABALPUR	30-APR-25	4
4.	PVR DIRECTOR'S CUT, MALL OF INDIA, NOIDA ⁽¹⁾	2-MAY-25	5
NEW SCREENS OPENED IN Q1 FY'26			20

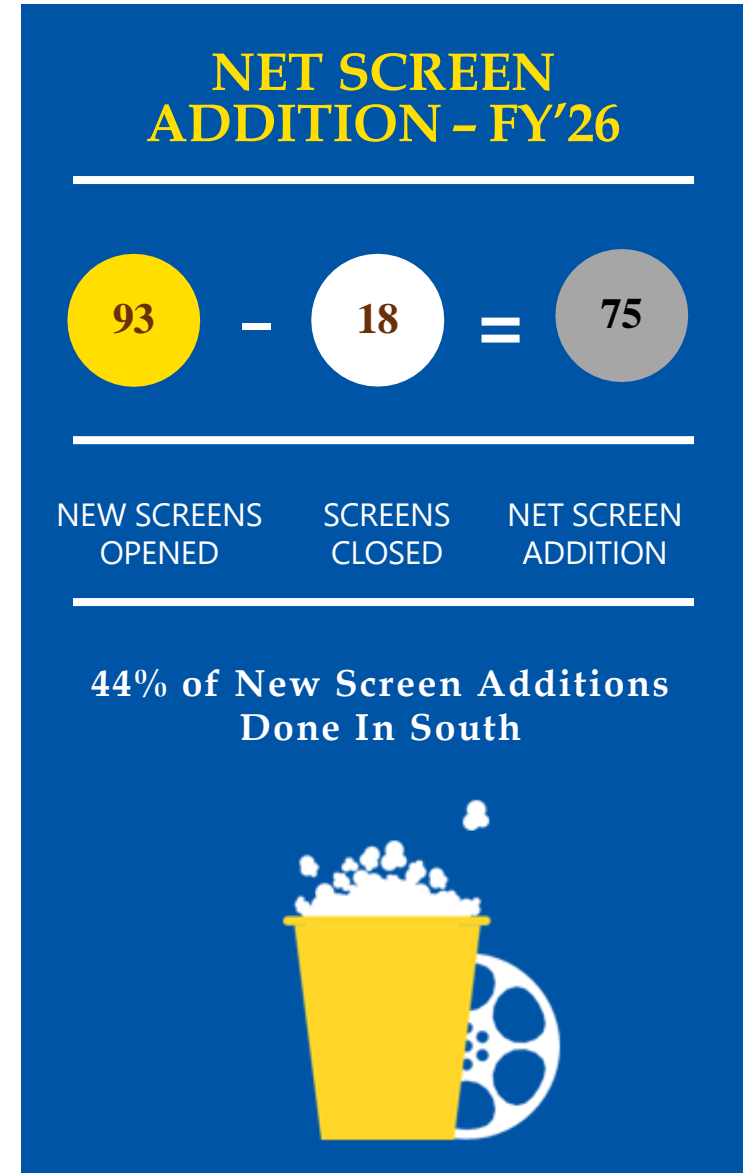
(1) 5 DIRECTOR'S CUT SCREENS WERE ADDED TO OUR EXISTING CINEMA IN MALL OF INDIA, NOIDA

#	CINEMAS OPENED IN Q2 FY'26	OPENING DATE	SCREENS
5.	INOX SMR VINAY METRO MALL, HYDERABAD	4-JUL-25	4
6.	INOX OBEROI SKY CITY, BORIVALI, MUMBAI	14-AUG-25	10
7.	INOX M5 E-CITY, BENGALURU	15-AUG-25	8
NEW SCREENS OPENED IN Q2 FY'26			22

#	CINEMAS OPENED IN Q3 FY'26	OPENING DATE	SCREENS
8.	INOX ML ACROPOLIS MALL, SILIGURI	15-OCT-25	4
9.	PVR WEST POINT, GANGTOK SIKKIM	24-OCT-25	3
10.	PVR ELEGANTE MALL, NSP PITAMPURA, NEW DELHI	20-NOV-25	6
11.	PVR INORBIT CYBERABAD, HYDERABAD ⁽²⁾	12-DEC-25	5
12.	PVR LEH, J & K	20-DEC-25	2
NEW SCREENS OPENED IN Q3 FY'26			20

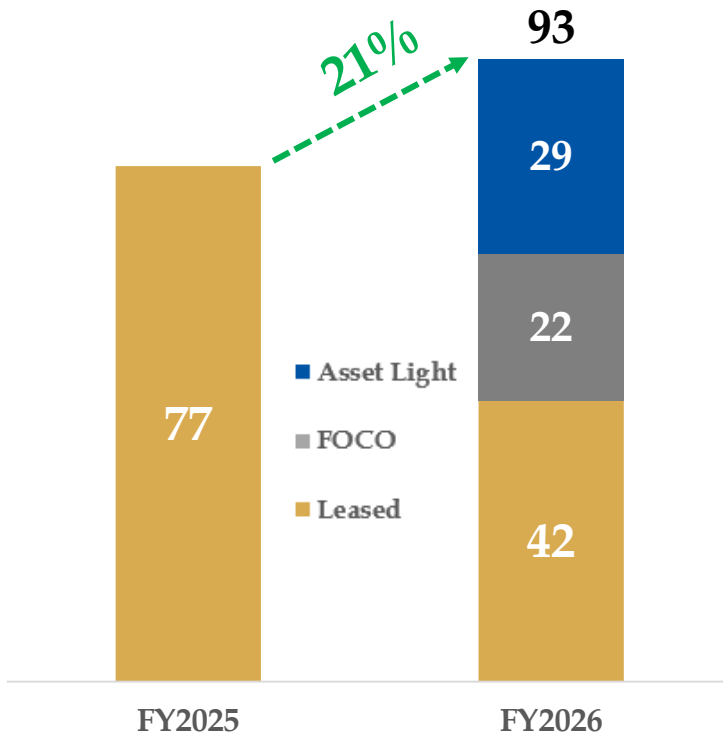
(2) 5 SCREENS WERE ADDED TO OUR EXISTING CINEMA IN INORBIT HYDERABAD

#	CINEMAS OPENED IN Q4 FY'26	OPENING DATE	SCREENS
13.	PVR LAKESHORE MALL, (Y JUNCTION) HYDERABAD	23-JAN-26	9
14.	INOX ODEON HYDERABAD	4-FEB-26	8
15.	PVR INORBIT MALL, HUBLI	20-FEB-26	7
16.	PVR ANJANA MALL, AGRA	19-MAR-26	4
17.	PVR DLF ONE MID TOWN PLAZA, NEW DELHI	19-MAR-26	3
NEW SCREENS OPENED IN Q4 FY'26			31

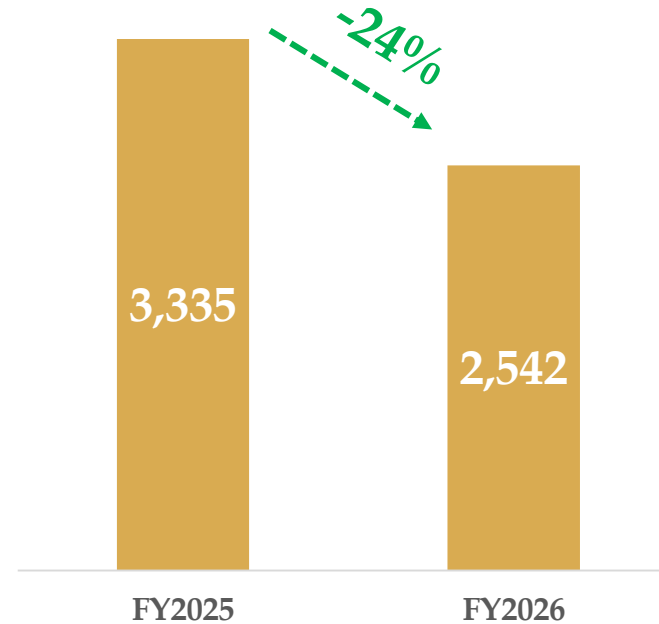


'Capital-Light' is Now 55% of New Screens; Capex Intensity Down 24%

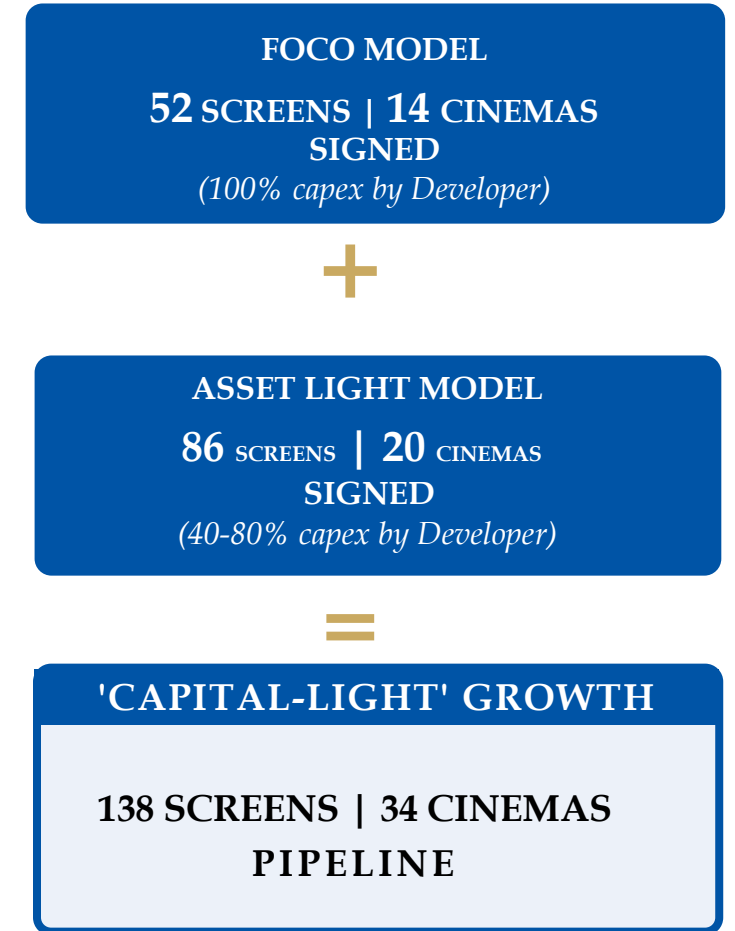
New Screens Addition Mix



Capex (INR Mn)

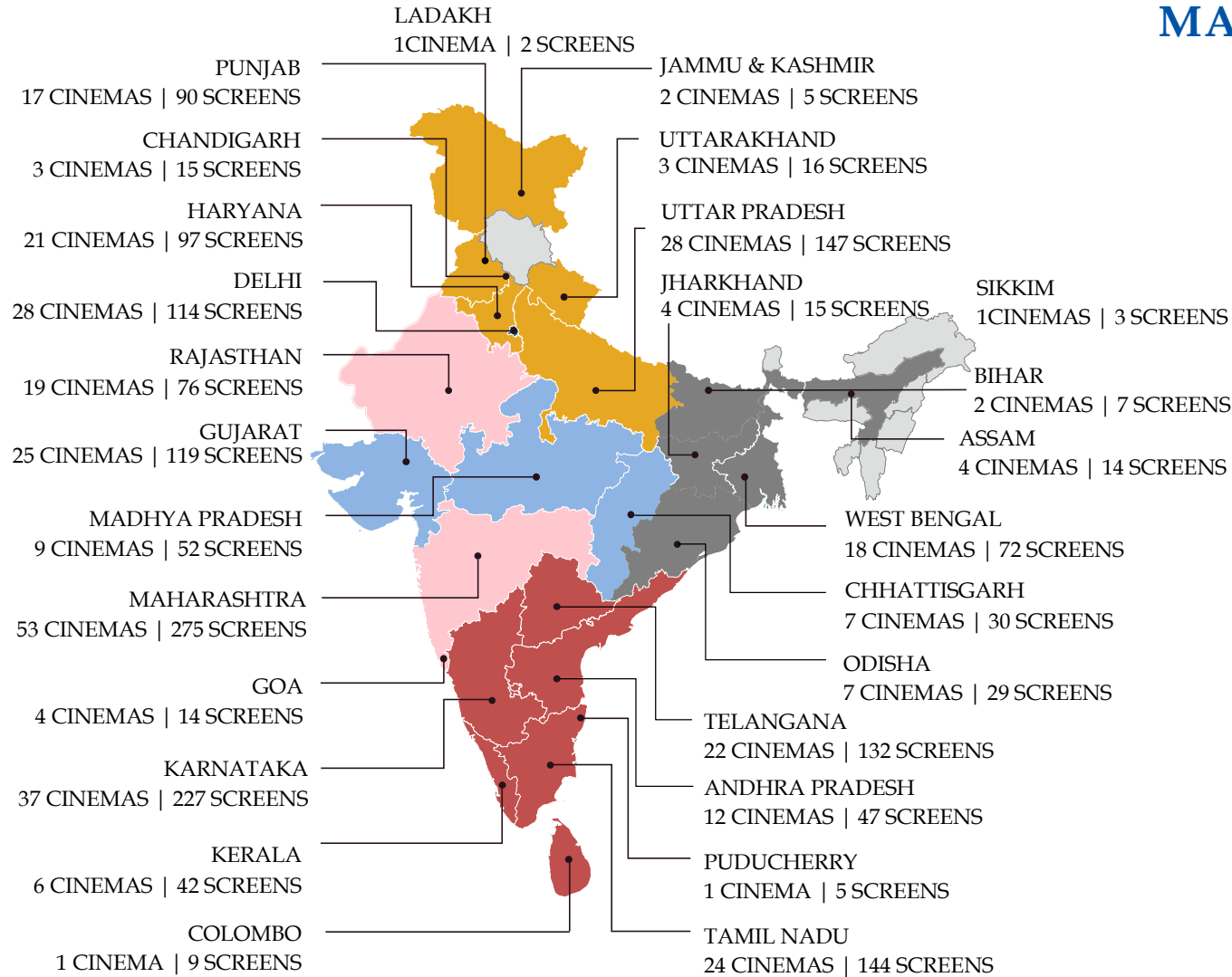


New Screens Pipeline

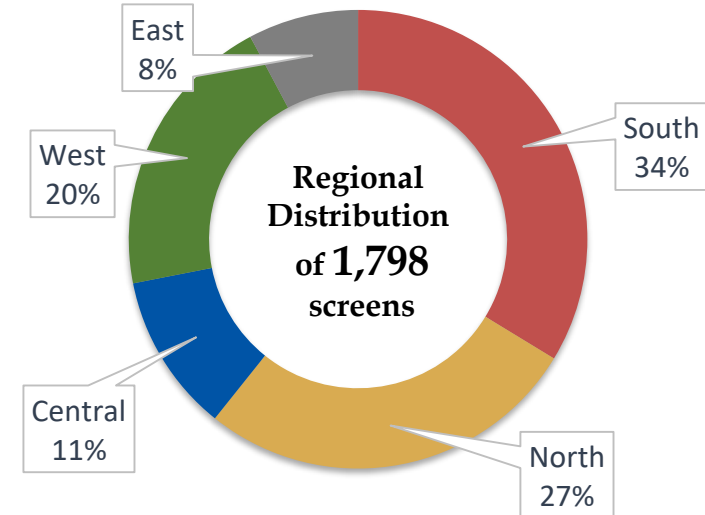
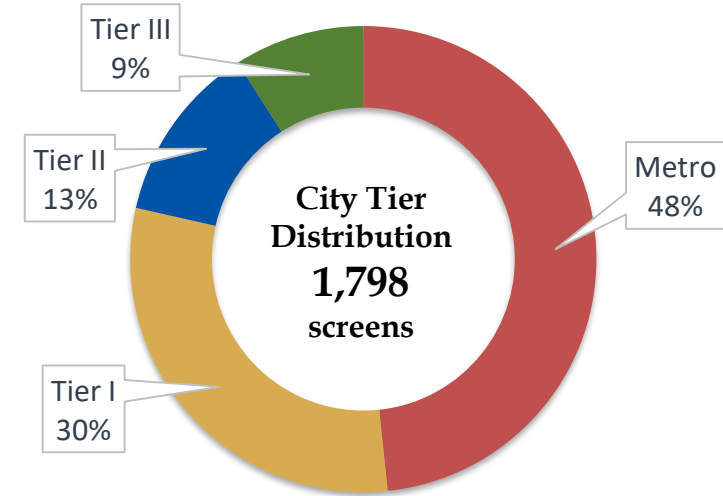


- Majority of New Screens Additions are Capital Light
- Leading to Drop in Capex Intensity by 24% YoY

Diversified Network of 1,798 Screens in 113 Cities



MAKING THE BRAND 'ASPIRATIONAL' & 'AFFORDABLE'



Note 1: Includes 19 Management Properties With 71 Screens. Screen Portfolio as on 31st March 2026

Note 2: South Includes Sri Lanka

Growing Presence of Premium Formats

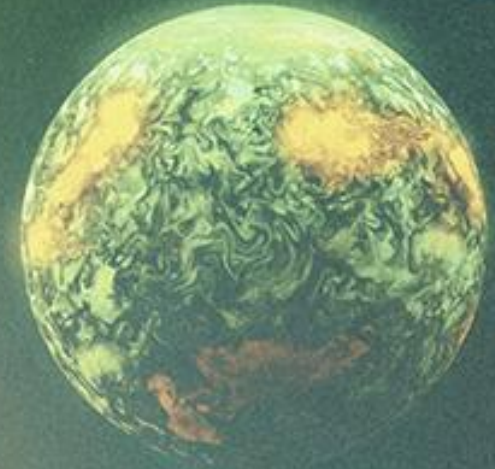


286 Screens	159	26	37	4	24	4	2	8	22
Features	<ul style="list-style-type: none"> Experience luxury at its best. 	<ul style="list-style-type: none"> Immersive movie experience Crystal-clear images Giant screens Powerful digital surround sound 	<ul style="list-style-type: none"> Special designed motion seats and synchronized to on-screen action Environmental effects like wind, mist, bubbles and more 	<ul style="list-style-type: none"> 4K projection and superior surround Dolby Atmos® audio. LED panels on the side walls 	<ul style="list-style-type: none"> Equipped with extra - large screens Dual 4K or RGB laser projection systems and advanced Dolby Atmos sound 	<ul style="list-style-type: none"> 270-degree, panoramic movie- watching experience 	<ul style="list-style-type: none"> Offering a projector-less movie going experience by bringing the visual power of LED picture quality to the big screen 	<ul style="list-style-type: none"> Premium movie watching concept. 	<ul style="list-style-type: none"> Colorful décor and playful seating A selection of family-friendly films and an indoor play structure where kids can climb, slide and explore

PREMIUM FORMATS ACCOUNT FOR 16% OF TOTAL SCREENS

RYAN GOSLING

BELIEVE



IN THE

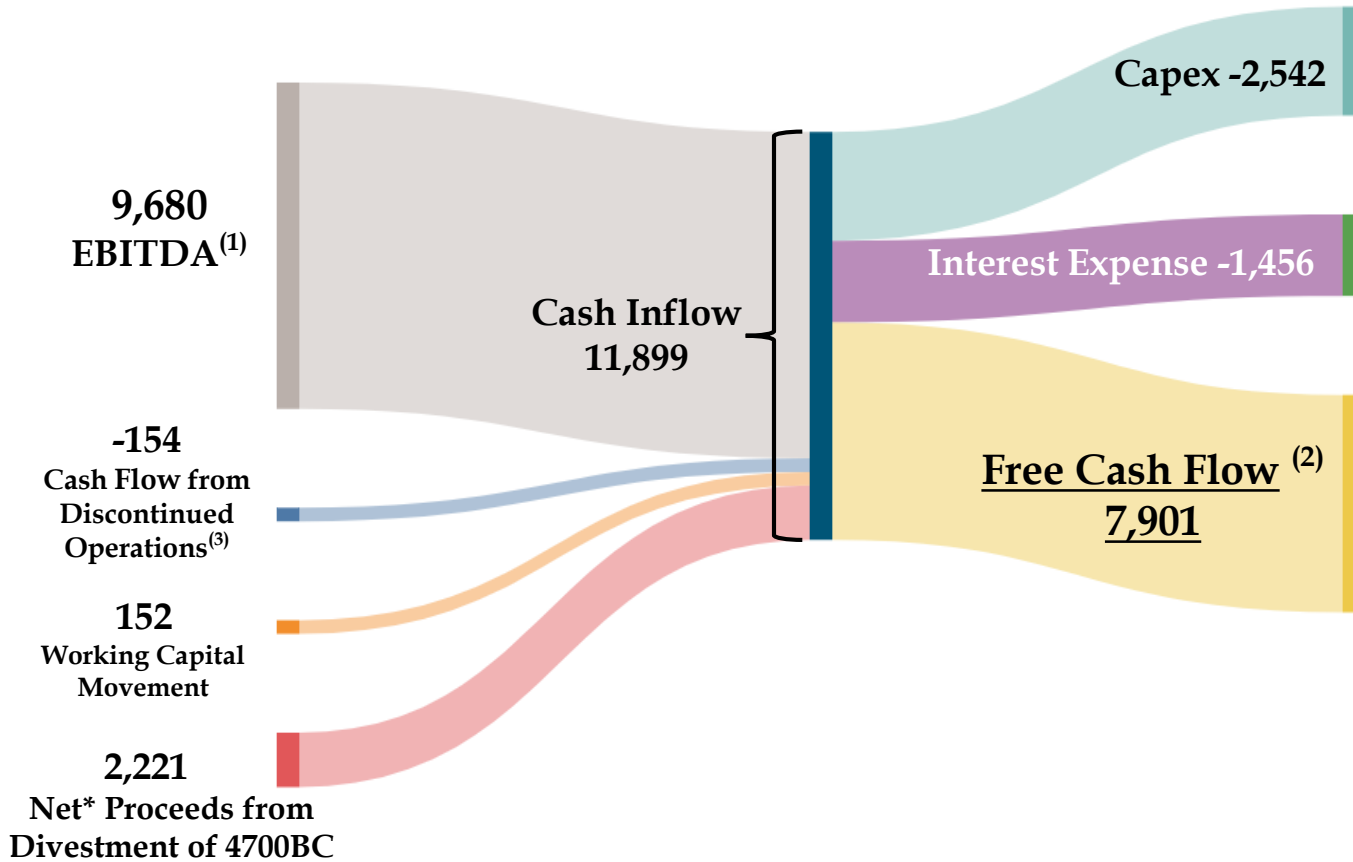


CASH FLOW AND BALANCE SHEET

Free Cash Flow: Consistently Stronger, Year After Year

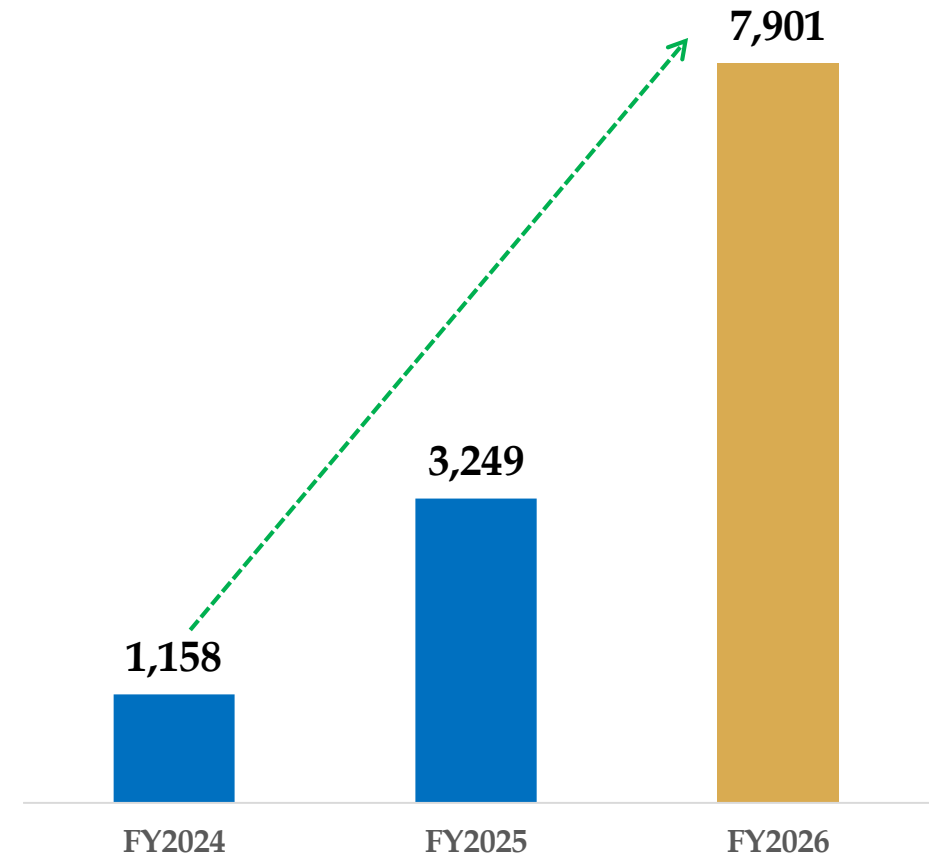
All Figures in INR Mn

FREE CASH FLOW FY'26



*Net of transaction expenses. Gross Proceeds : INR 2,268 Mn

FY'26 FCF More Than 2x FY25, ~7x FY24



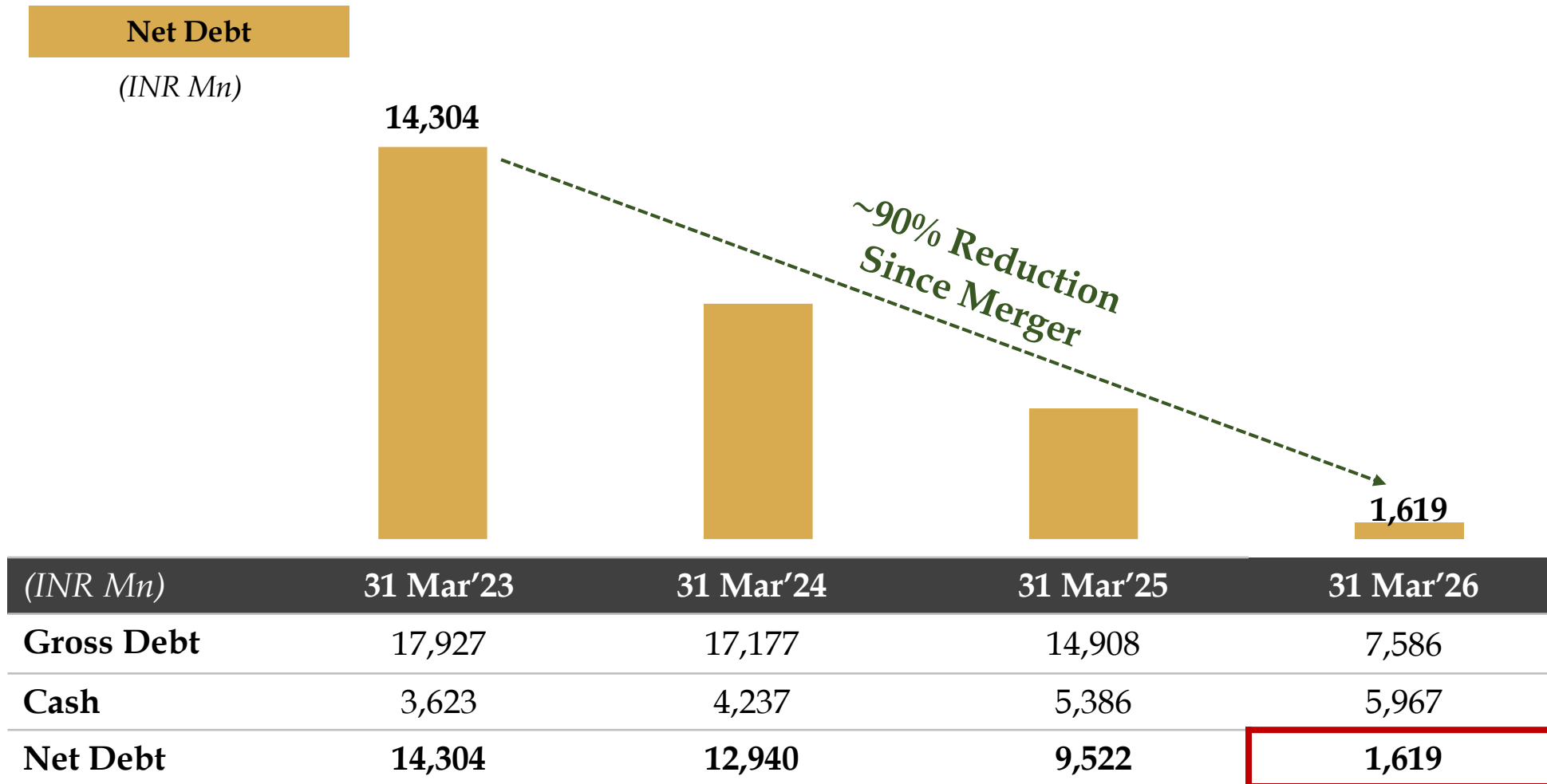
ROBUST OPERATING CASH FLOWS AND REDUCED CAPEX INTENSITY DRIVING STRONG FREE CASH GENERATION

(1) EBITDA is before exceptional items and after excluding the impact of Ind AS 116 - 'Leases'

(2) Free Cash Flow has been calculated before changes in debt & equity

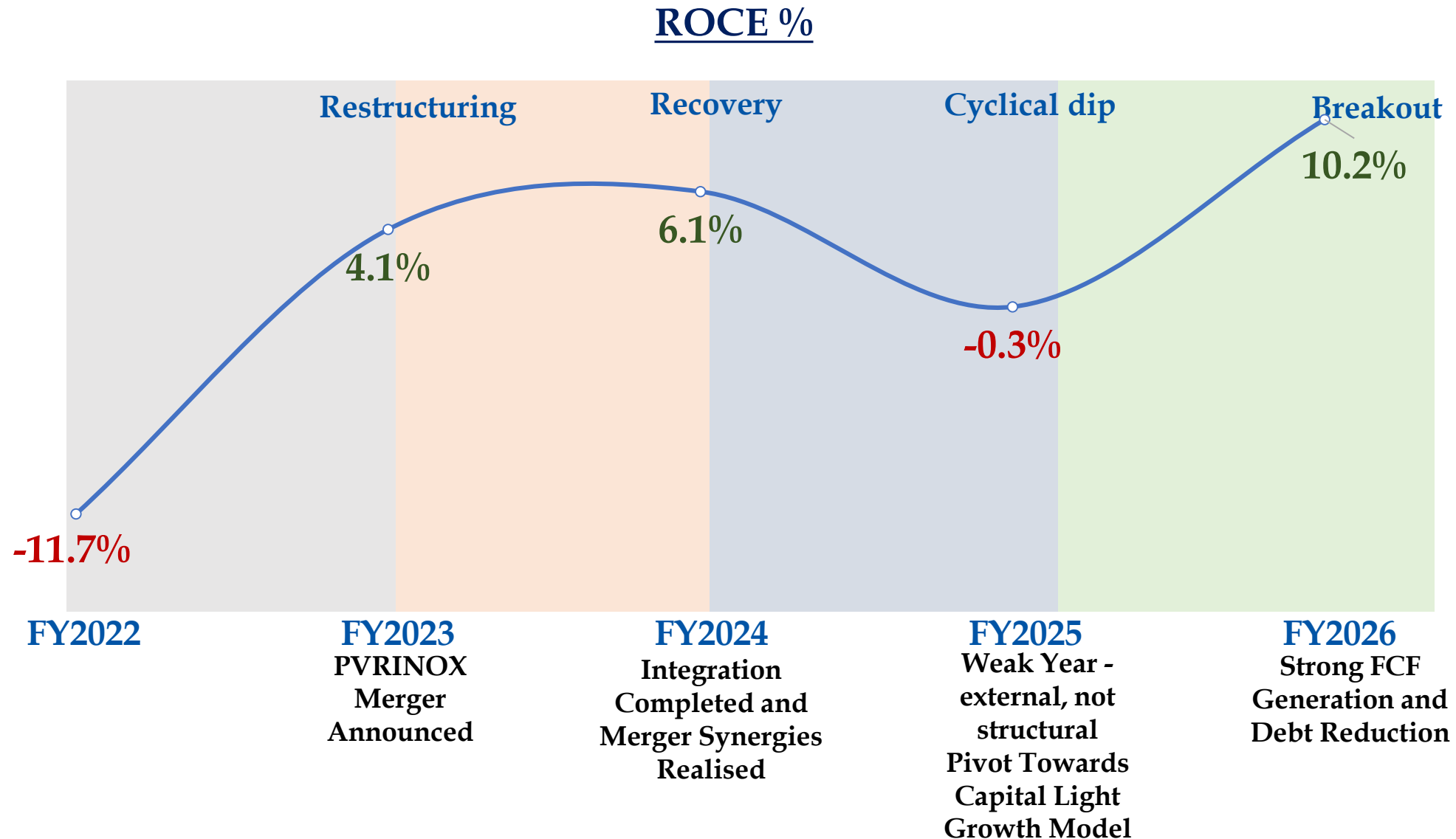
(3) Cash flow of 'Zea Maize Pvt. Ltd.' from 01 Apr 2025 to 28th Jan 2026

Strengthened Balance Sheet Through Debt Reduction



 **Achieved Negligible Net Debt Level**

Return On Capital Employed Break-Out



Note: Above financial numbers are after excluding the impact of Ind AS 116 - 'Leases' and adjusting for Merger Goodwill. EBIT is excluding the impact of exceptional items

Note: Refer to Annexure 4 for the calculation



ANNEXURES

Annexure 1: Result Summary (Consol) - Q4, FY'26 vs Q4, FY'25

Particulars (INR Mn)	Q4, FY'26			Q4, FY'25		
	Reported	Ind-AS 116 Impact	Ind-AS 116 Adjusted	Reported	Ind-AS 116 Impact	Ind-AS 116 Adjusted
Total Income	16,239	461	15,778	12,885	259	12,626
Expenses	10,955	-3,127	14,082	9,405	-2,932	12,337
EBITDA	5,284	3,588	1,696	3,480	3,191	289
EBITDA Margin	32.5%		10.7%	27.0%		2.3%
Depreciation & Amortization	3,305	2,046	1,259	3,155	1,945	1,210
EBIT	1,979	1,542	437	325	1,246	-921
Finance Costs	1,730	1,443	287	1,955	1,505	450
Share in net loss of JV	-1		-1	-2		-2
PBT Before Exceptional item	248	99	149	-1,632	-259	-1,373
Exceptional Item ⁽¹⁾	-40		-40	0		0
PBT	208	99	109	-1,632	-259	-1,373
Corporate Tax	58	24	34	-424	-65	-359
PAT from continuing operations	150	75	75	-1,208	-194	-1,014
PAT Margin from Continuing operations	0.9%		0.5%	-9.4%		-8.0%
Loss before tax from discontinued operations	-41	1	-42	-45		-45
Exceptional gain on disposal of discontinued operations ⁽²⁾	1,952		1,952			
Tax expense of discontinued operations	197		197			
Profit/(Loss) after exceptional item and tax from discontinued operations	1,714	-1	1,713	-45		-45
Profit/(Loss) for the year	1,864	76	1,788	-1,253	-193	-1,060
PAT Margin	11.5%		11.3%	-9.7%		-8.4%
EPS - Basic (INR) ⁽³⁾	1.53		0.76	-12.30		-10.32
EPS - Diluted (INR) ⁽³⁾	1.55		0.77	-12.30		-10.32

Note: Above financial numbers are after excluding the impact of Ind AS 116 - 'Leases

(1) Exceptional item includes the one-time impact of the New Labour Code (2) Exceptional gain on Sale of Zea Maize(4700 BC) (3) EPS is based on PAT from Continuing Operations

Annexure 2: Result Summary (Consol) – 12M, FY’26 vs 12M, FY’25

Particulars (INR Mn)	12M, FY’26			12M, FY’25		
	Reported	Ind-AS 116 Impact	Ind-AS 116 Adjusted	Reported	Ind-AS 116 Impact	Ind-AS 116 Adjusted
Total Income	68,297	871	67,426	58,708	790	57,918
Expenses	45,508	-12,238	57,746	41,426	-11,644	53,070
EBITDA	22,789	13,109	9,680	17,282	12,434	4,848
EBITDA Margin	33.4%		14.4%	29.4%		8.4%
Depreciation & Amortization	12,704	8,016	4,688	12,774	7,948	4,826
EBIT	10,085	5,093	4,992	4,508	4,486	22
Finance Costs	7,328	5,821	1,507	8,087	6,207	1,880
Share in net loss of JV	-5		-5	-3		-3
PBT Before Exceptional item	2,752	-728	3,480	-3,582	-1,721	-1,861
Exceptional Item ⁽¹⁾	-483		-483	0		0
PBT	2,269	-728	2,997	-3,582	-1,721	-1,861
Corporate Tax	508	-183	691	-934	-433	-501
PAT from continuing operations	1,761	-545	2,306	-2,648	-1,288	-1,360
<i>PAT Margin from Continuing operations</i>	<i>2.6%</i>		<i>3.4%</i>	<i>-4.5%</i>		<i>-2.3%</i>
Loss before tax from discontinued operations	-188	5	-193	-161	2	-163
Exceptional gain on disposal of discontinued operations ⁽²⁾	1,952		1,952			
Tax expense of discontinued operations	197		197			
Profit/(Loss) after exceptional item and tax from discontinued operations	1,567	-5	1,562	-161	-2	-163
Profit/(Loss) for the year	3,328	-540	3,868	-2,809	-1,285	-1,523
<i>PAT Margin</i>	<i>4.9%</i>		<i>5.7%</i>	<i>-4.8%</i>		<i>-2.6%</i>
EPS - Basic (INR) ⁽³⁾	17.93		23.48	-26.97		-13.85
EPS - Diluted (INR) ⁽³⁾	17.86		23.38	-26.97		-13.85

Note: Above financial numbers are after excluding the impact of Ind AS 116 – ‘Leases’

(1) Exceptional item includes the one-time impact of the New Labour Code (2) Exceptional gain on Sale of Zea Maize(4700 BC) (3) EPS is based on PAT from Continuing Operations

Annexure 3: Balance Sheet

Particulars (INR Mn)	Mar 31, 2026	Mar 31, 2025
Total Shareholder funds	73,787	70,534
Equity Share Capital	982	982
Other Equity	72,805	69,533
Non-Controlling Interest		19
Total Debt	7,586	14,908
Long Term Borrowings	4,592	9,198
Short Term Borrowings	2,994	5,710
Lease Liability	60,205	62,838
Other Non Current Liabilities	1,590	1,576
Total Sources of Funds	1,43,168	1,49,856
Net Fixed Assets Incl. CWIP	30,349	32,665
Goodwill	57,367	57,431
Right of Use assets (ROU)	46,329	49,923
Other Non Current Assets	10,905	11,698
Cash & Cash Equivalents ⁽¹⁾	5,967	5,386
Current Assets	5,206	5,521
Less: Current Liabilities	12,955	12,768
Net Current Assets	-7,749	-7,247
Total Assets	1,43,168	1,49,856

(1) Includes Investments, Other Bank balances and Bank deposits (under 'Other Financials Assets')

Annexure 4: ROCE% Calculation

Particulars (INR Mn)	FY2022 ⁽¹⁾	FY2023	FY2024	FY2025	FY2026
Gross Debt (A)	15,915	17,927	17,177	14,908	7,586
INDAS 116 Adjusted Net Worth (B) (Refer Calculation Below)	36,993	82,141	84,173	83,449	87,663
PVRINOX Merger goodwill - (C)		46,338	46,338	46,338	46,338
Total Capital Employed (A)+(B)- (C)	52,908	53,730	55,012	52,019	48,911
EBIT	-6,205	2,177	3,380	-133	4,992
ROCE % (EBIT / Capital Employed)	-11.7%	4.1%	6.1%	-0.3%	10.2%

Reported Networth (X)	20,619	73,295	73,232	70,534	73,787
ROU Assets	48,131	53,746	54,917	49,923	46,329
Lease Liabilities	64,505	62,592	65,858	62,838	60,205
Net ROU assets (Y)	-16,374	-8,846	-10,941	-12,915	-13,876
INDAS 116 Adjusted Networth (X)-(Y)	36,993	82,141	84,173	83,449	87,663

Note: Above financial numbers are after excluding the impact of Ind AS 116 - 'Leases'. EBIT is excluding the impact of exceptional items

(1) FY2022 is proforma PVR + INOX combined

C O N T E N T



L I N E U P

Content Lineup



KARUPPU

CAST
SURIYA SIVAKUMAR,
TRISHA KRISHNAN,
INDRANS

DIRECTOR
RJ BALAJI

**TAMIL, KANNADA,
TELUGU,
MALAYALAM**

14TH MAY'2026



PATI PATNI AUR WHO DO

CAST
AYUSHMANN
KHURRANA,
SARA ALI KHAN,
RAKUL PREET SINGH,
WAMIQA GABBI

DIRECTOR
MUDASSAR AZIZ

HINDI

15TH MAY'2026



DRISHYAM 3

CAST
MOHANLAL,
MEENA,
SIDDIQUE

DIRECTOR
JEETHU JOSEPH

MALAYALAM

21ST MAY'2026



STAR WARS : THE MANDALORIAN AND GROGU
3D, IMAX, 4DX, ICE, SCREEN-X

CAST
PEDRO PASCAL,
JEREMY ALLEN WHITE,
SIGOURNEY WEAVER

DIRECTOR
JON FAVREAU

ENGLISH

22ND MAY'2026



CHAND MERA DIL

CAST
LAKSHYA,
ANANYA PANDAY

DIRECTOR
VIVEK SONI

HINDI

22ND MAY'2026



RETURN OF THE JUNGLE

CAST
VOICE ARTISTS

DIRECTOR
VAIBHAV KUMARESH

HINDI

29TH MAY'2026



PEDDI
4DX, ICE

CAST
RAM CHARAN,
DR.SHIVA
RAJKUMAR,
JANHVI KAPOOR,

DIRECTOR
BUCHI BABU SANA

**TELUGU, TAMIL,
MALAYALAM,
KANNADA, HINDI**

04TH JUN'2026



HAI JAWANI TOH ISHQ HONA HAI

CAST
VARUN DHAWAN,
POOJA HEGDE,
MRUNAL THAKUR

DIRECTOR
DAVID DHAWAN

HINDI

05TH JUN'2026

Content Lineup



SCARY MOVIE 6

CAST
REGINA HALL,
MARLON WAYANS,
ANNA FARIS

DIRECTOR
MICHAEL TIDDES

ENGLISH

05TH JUN'2026



MASTERS OF THE UNIVERSE - 4DX

CAST
NICHOLAS GALITZINE,
CAMILA MENDES,
ALISON BRIE,
IDRIS ELBA

DIRECTOR
TRAVIS KNIGHT

**ENGLISH, HINDI,
TAMIL, TELUGU**

05TH JUN'2026



LAIKEY LAIKAA

CAST
RASHA THADANI,
ABHAY VARMA

DIRECTOR
SAURABH GUPTA

HINDI

05TH JUN'2026



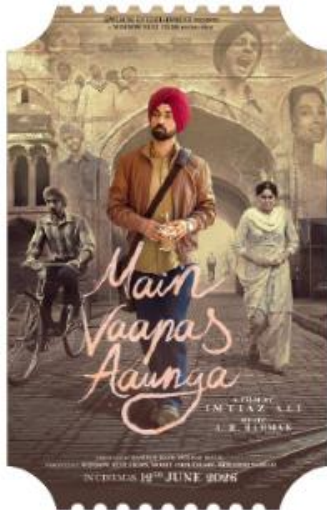
BANDAR

CAST
BOBBY DEOL,
SAPNA PABBI,
SANYA MALHOTRA,
SABA AZAD,
JITENDRA JOSHI

DIRECTOR
ANURAG KASHYAP

HINDI

05TH JUN'2026



MAIN VAAPAS AAUNGA

CAST
DILJIT DOSANJH,
VEDANG RAINA ,
SHARVARI WAGH,
NASEERUDDIN SHAH

DIRECTOR
IMTIAZ ALI

HINDI

12TH JUN'2026



**TOY STORY 5
IMAX, 4DX, ICE**

CAST
TOM HANKS,
TIM ALLEN,
JOAN CUSACK

DIRECTOR
ANDREW STANTON

ENGLISH

19TH JUN'2026



COCKTAIL 2

CAST
SHAHID KAPOOR,
RASHMIKA
MANDANNA,
KRITI SANON

DIRECTOR
HOMI ADAJANIA

HINDI

19TH JUN'2026



**SUPERGIRL
WOMAN OF
TOMORROW
IMAX, 4DX, ICE**

CAST
MILLY ALCOCK,
MATTHIAS
SCHOENAERTS,
EVE RIDLEY

DIRECTOR
CRAIG GILLESPIE

ENGLISH

26TH JUN'2026

Content Lineup



WELCOME TO THE JUNGLE

CAST
AKSHAY KUMAR,
SUNIEL SHETTY,
JACKIE SHROFF,
RAVEENA TANDON,
DISHA PATANI

DIRECTOR
AHMED KHAN

HINDI

26TH JUN'2026



CARRY ON JATTA 4

CAST
GIPPY GREWAL,
BINNU DHILLON,
JASWINDER BHALLA

DIRECTOR
SMEEP KANG

PUNJABI

26TH JUN'2026



LENIN

CAST
AKHIL AKKINENI,
BHAGYASHRI BORSE

DIRECTOR
MURALI KISHORE

TELUGU

26TH JUN'2026



MINIONS AND MONSTERS

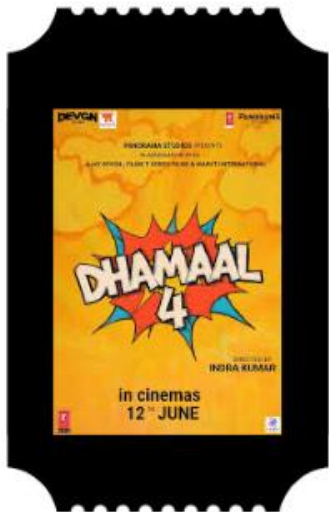
**IMAX, 4DX, ICE,
SCREENX**

CAST
PIERRE COFFIN,
ALLISON JANNEY,
CHRISTOPH WALTZ

DIRECTOR
PIERRE COFFIN

ENGLISH

02ND JUL'2026



DHAMAAL 4

CAST
AJAY DEVGN,
RITEISH DESHMUKH,
ARSHAD WARSII,
SANJAY MISHRA,
JAAVED JAAFERI

DIRECTOR
INDRA KUMAR

HINDI

03RD JUL'2026



MOANA
IMAX, 4DX, ICE

CAST
CATHERINE,
DWAYNE JOHNSON,
JOHN TUI

DIRECTOR
THOMAS KAIL

ENGLISH

10TH JUL'2026



ALPHA
ICE, 4DX

CAST
ALIA BHATT,
SHARVARI WAGH,
ANIL KAPOOR,
BOBBY DEOL

DIRECTOR
SHIV RAWAIL

**HINDI, TELUGU,
TAMIL**

10TH JUL'2026



THE ODYSSEY
IMAX, 4DX

CAST
MATT DAMON,
TOM HOLLAND,
ANNE HATHAWAY

DIRECTOR
CHRISTOPHER
NOLAN

ENGLISH

17TH JUL'2026



RAFTAAR
CAST
 RAJKUMMAR RAO,
 KEERTHY SURESH
DIRECTOR
 ADITYA NIMBALKAR
HINDI

24TH JUL'2026



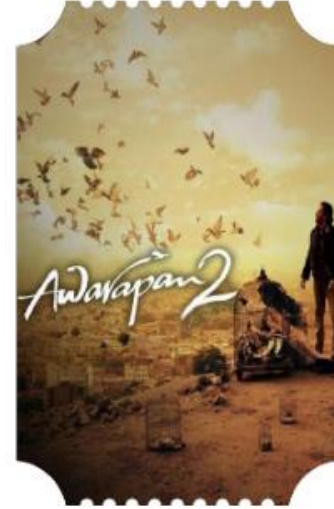
SPIDER-MAN: BRAND NEW DAY
3D, 4DX, ICE
CAST
 TOM HOLLAND,
 ZENDAYA,
 SADIE SINK
DIRECTOR
 DESTIN DANIEL CRETTON
**ENGLISH, HINDI,
 TAMIL, TELUGU**

31ST JUL'2026



**LAHORE 1947/
 BATWAARA 1947**
CAST
 SUNNY DEOL ,
 PREITY ZINTA ,
 SHABANA AZMI
DIRECTOR
 RAJKUMAR SANTOSHI
HINDI

13TH AUG'2026



AWARAPAN 2
CAST
 EMRAAN HASHMI
 DISHA PATANI
DIRECTOR
 NITIN KAKKAR
HINDI

14TH AUG'2026



JAILER 2
4DX
CAST
 RAJNIKANTH,
 MOHANLAL,
 SHIVRAJ KUMAR,
DIRECTOR
 NELSON
 DILIPKUMAR
**TAMI, TELUGU,
 KANNADA,
 MALAYALAM, HINDI**

14TH AUG'2026



**PAW PATROL:
 THE DINO MOVIE**
CAST
 MCKENNA GRACE,
 JAMEELA JAMIL,
 TERRY CREWS
DIRECTOR
 CAL BRUNKER
ENGLISH

28TH AUG'2026



THE DOG STARS
**4DX, SCREEN-X
 IMAX**
CAST
 JACOB ELORDI ,
 JOSH BROLIN,
 MARGARET
 QUALLEY
DIRECTOR
 RIDLEY SCOTT
ENGLISH

28TH AUG'2026



**KHOSLA KA
 GHOSLA - 2**
CAST
 ANUPAN KHER,
 KIRAN JUNEJA
 SIPPY,
 RANVIR SHOREY,
 TARA SHARMA
DIRECTOR
 PRASHANT BHAGIA
HINDI

28TH AUG'2026

Content Lineup



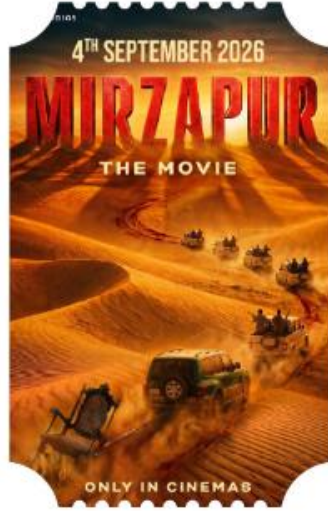
VVAN - FORCE OF THE FORREST
4DX

CAST
SIDHARTH MALHOTRA,
TAMANNAAH BHATIA

DIRECTOR
DEEPAK KUMAR MISHRA

HINDI

28TH AUG' 2026



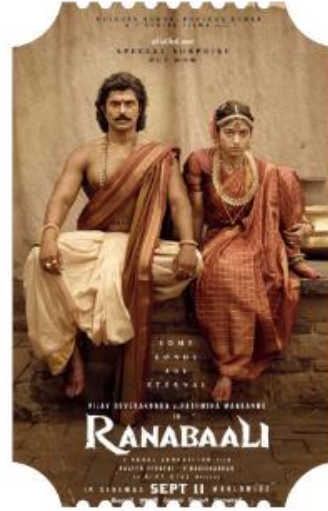
MIRZAPUR: THE MOVIE

CAST
PANKAJ TRIPATHI,
ALI FAZAL,
DIVYENDU,
ABHISHEK BANERJEE

DIRECTOR
GURMMEET SINGH

HINDI

04TH SEP' 2026



RANABAALI
4DX

CAST
VIJAY DEVERAKONDA,
RASHMIKA MANDANNA

DIRECTOR
RAHUL SANKRITYAN

TELUGU, TAMIL, HINDI, KANNADA, MALAYALAM

11TH SEP' 2026



STREET FIGHTER
IMAX, 4DX

CAST
JASON MOMOA,
NOAH CENTINEO,
ANDREW KOJI,
VIDYUT JAMMAL

DIRECTOR
KITAO SAKURAI

ENGLISH

16TH OCT' 2026



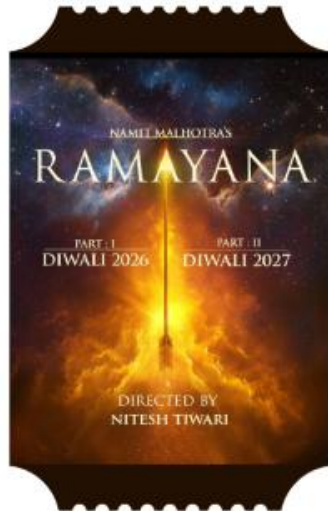
DRISHYAM 3

CAST
AJAY DEVGN,
SHRIYA SARAN,
TABU,
ISHITA DUTTA

DIRECTOR
ABHISHEK PATHAK

HINDI

02ND OCT' 2026



RAMAYANA: PART 1 - 4DX

CAST
RANBIR KAPOOR,
SAI PALLAVI,
SUNNY DEOL,
YASH,
KAJAL AGARWAL

DIRECTOR
NITESH TIWARI

HINDI/MULTIPLE

DIWALI RELEASE



RANGER

CAST
AJAY DEVGN,
SANJAY DUTT,
TAMANNAAH BHATIA

DIRECTOR
JAGAN SHAKTI

HINDI

04TH DEC' 2026



AVENGERS: DOOMSDAY
4DX

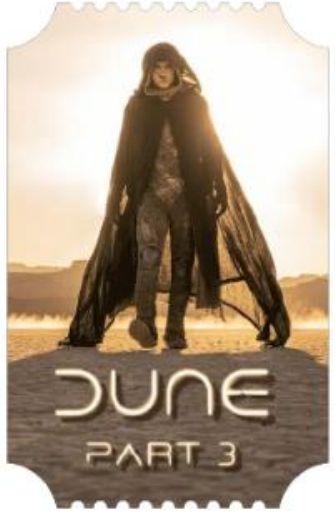
CAST
ROBERT DOWNEY JR,
VENESSA KIRBY,
FLORENCE PUGH

DIRECTOR
ANTHONY RUSSO JOE RUSSO

ENGLISH, HINDI, TAMIL, TELUGU

18TH DEC' 2026

Content Lineup



DUNE : PART THREE - IMAX

CAST
TIMOTHEE CHALAMET,
ZENDAYA,
FLORENCE PUGH,
JASON MOMOA,
ROBERT PATTINSON

DIRECTOR
DENIS VILLENEUVE

ENGLISH

18TH DEC'2026



KING

CAST
SHAHRUKH KHAN,
SUHANA KHAN,
ABHISHEK BACHAN,
ABHAY VERMA

DIRECTOR
SIDDHARTH ANAND

HINDI

24TH DEC'2026



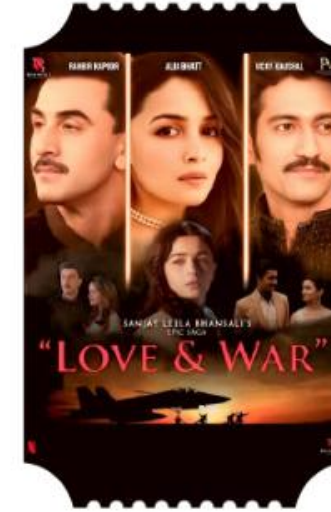
JUMANJI: OPEN WORLD
IMAX, 4DX

CAST
DWAYNE JOHNSON,
KAREN GILLAN,
JACK BLACK

DIRECTOR
JAKE KASDAN

**ENGLISH, HINDI,
TAMIL, TELUGU**

11TH DEC'2026



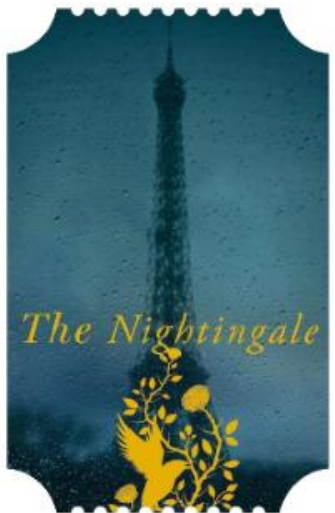
LOVE & WAR

CAST
RANBIR KAPOOR,
ALIA BHATT,
VICKY KAUSHAL

DIRECTOR
SANJAY LEELA BHANSALI

HINDI

21ST JAN'2027



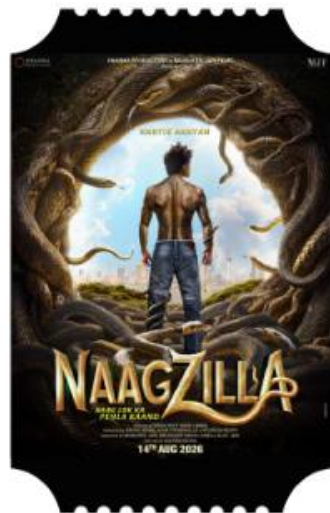
THE NIGHTINGALE

CAST
ELLE FLANNING,
DAKOTA FANNING,
EDMUND DONOVAN,
MARK RYLANCE,
SHIRA HAAS

DIRECTOR
MICHAEL MORRIS

ENGLISH

12TH FEB'2026



NAAGZILLA
4DX

CAST
KARTIK AARYAN

DIRECTOR
MRIGHDEEP SINGH LAMBA

HINDI

12TH FEB'2027



SPIRIT

CAST
PRABHAS,
TRIPTII DIMRI,
PRAKASH RAJ

DIRECTOR
SANDEEP REDDY VANGA

TELUGU

05TH MAR'2027



THE THOMAS CROWN AFFAIR

CAST
MICHAEL B. JORDAN
ADRIA ARJONA
KENNETH BRANAGH

DIRECTOR
MICHAEL B. JORDAN

ENGLISH

05TH MAR'2027



THANK
YOU