



Shri Balaji Valve Components Ltd

(Formerly known as Shri Balaji Valve Components Pvt Ltd)

Manufacturing of Precision Machined & Valve Components.

CIN: L29220PN2011PLC141370

GST No: 27AAQCS607681Z2

Date:04/06/2026

To,
The General Manager
DCS-CRD
(Corporate Relationship Department)
BSE Ltd.
Rotunda Building
P.J. Tower, Dalal Street, Fort
Mumbai-400001

BSE SCRIP Code: SBVCL | 544074|

SUBJECT: Disclosure under Regulation 30 of SEBI (LODR) Regulations, 2015 - Investor Presentation on Audited Financial Results for the Half Year and Year ended 31 March 2026

Dear Sir/Madam,

Pursuant to Regulation 30 of the Securities and Exchange Board of India (Listing Obligations and Disclosure Requirements) Regulations, 2015 ("SEBI LODR Regulations"), we hereby submit the Investor Presentation on the Audited Financial Results of the Company for the half year and year ended **31st March,2026**.

The said presentation covers the performance highlights and financial results for the period and is intended for use in interactions with investors, analysts, and other stakeholders.

We further confirm that the aforesaid Investor Presentation is also being simultaneously uploaded on the Company's official website at www.balajivalvecomponents.com for the information of the public.

Kindly take the above information on your record and disseminate the same appropriately. This is for your information and record.

Thanking you.

FOR SHRI BALAJI VALVE COMPONENTS LTD

SHRINIVAS
LAXMIKANT
KOLE

Digitally signed by
SHRINIVAS
LAXMIKANT KOLE
Date: 2026.06.04
10:29:45 +05'30'

SHRINIVAS LAXMIKANT KOLE

Whole Time Director & CFO

DIN: - 10119216

Date :- 04-06-2026

Place: Pune

Encl: Investor Presentation

Registered office

Plot No: PAP B 31, Chakan MIDC,
Phase-2, Bhamboli, Tal. Khed
Pune- 410501, Maharashtra, India.

✉ info@balajivalvecomponents.com

🌐 www.balajivalvecomponents.com

☎ **+91-9765565409**

H2FY26

Earnings Presentation



**Shri Balaji
Valve Components
Ltd**

An aerial, high-angle photograph of a vast industrial manufacturing plant. The facility is filled with rows of large, complex machinery, likely CNC machines or assembly lines. Several workers wearing hard hats are visible throughout the space, engaged in various tasks. The floor is marked with yellow lines, and there are overhead cranes and structural beams. The lighting is bright, and the overall atmosphere is one of a busy, large-scale industrial environment. The image is overlaid with a semi-transparent orange and blue gradient.

COMPANY OVERVIEW



WHO WE ARE

One-stop solution for all your Assembly Needs

At Shri Balaji Valve Components Ltd, we develop and manufacture customized valve components of highest quality to make even your most critical applications superior and entirely safe. Our company's state-of-the-art facility is equipped to consistently meet and exceed the customers' needs and expectations. This extraordinary ability has helped us grow in leaps and bounds.



36+ Years of Experience
in Machining Streams



2011
Incorporation



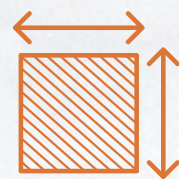
3 Plants



300+ Strength of
Human Resources



3 Forging Hammer



1,00,000+
Manufacturing
Area (Sq. ft.)



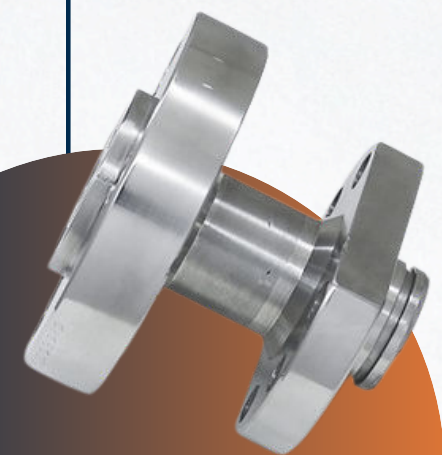
14 Countries, 6
Continents Global
Supply



Certificates-
ISO 9001:2015
PED 2014/68/EU
AD 2000 MERKBLATT
WO



130+ Machines



OUR CAPABILITIES

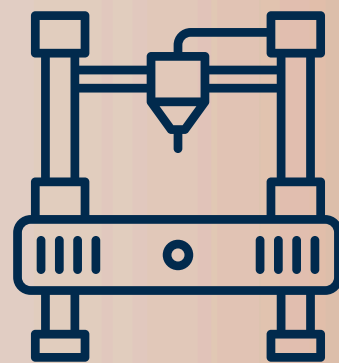
Shri Balaji Valve Components Ltd's state-of-the-art Pune facilities are equipped with over 130+ advanced machines and supported by cutting-edge inspection and testing systems. A team of 300+ highly qualified and progressive engineers spearhead the company's design, development, and engineering operations, ensuring precision, innovation, and excellence at every stage.

Forging- Our forging facility is PED certified and is equipped with Closed Hammer, Trimming Press, Oil Fired Furnace, and Closed Die Forging.

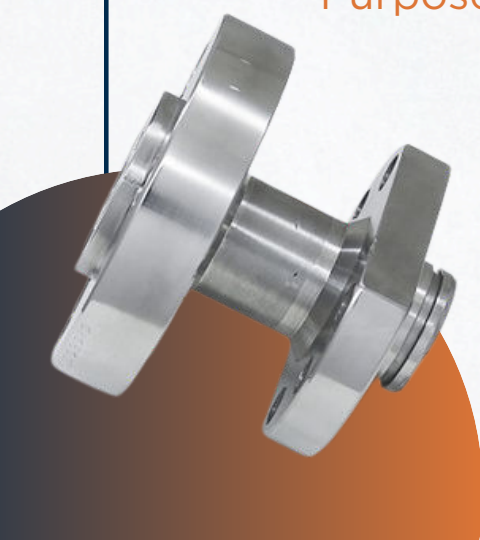


Heat Treatment- Our heat treatment facility is PED certified and is outfitted with Continuous furnace, Electric & PLC Control for annealing, Solution Annealing, Age Hardening, Quenching & Tempering.

Machining- Our machining capability is unparalleled, featuring an array of CNC Vertical Turret Lathes, VMCs, Special Purpose machines and multitasking machines.



Quality Control Process- Our quality control process is supported by Inspection Tools such as Trimos and 2D Master.



OUR PRODUCT PORTFOLIO

Our company is engaged in the business of manufacturing ready to assemble valves components catering to different industries. These components along with other part can be assembled into Valve which are used for on-off or throttling control of non-corrosive or mildly corrosive substances.

Valve Components



Stem
Range: 1/2" - 60"
Class: 150 PSI - 2500 PSI



Actuator Stem
Range: 1 1/2" - 36"
Class: 150 PSI - 2500 PSI



Spline Shaft
Range: 2" - 48"
Class: 150 PSI - 2500 PSI



Trunnion Plate
Range: 2" - 36"
Class: 150 PSI - 2500 PSI



Packing Gland
Range: 1/2" - 6"
Class: 150 PSI - 2500 PSI



Body Adaptor
Range: 1 1/2" - 16"
Class: 150 PSI - 2500 PSI



Stem Housing
Range: 1 1/2" - 36"
Class: 150 PSI - 2500 PSI



Body
Range: 1 1/2" - 16"
Class: 150 PSI - 2500 PSI



Sleeve
Range: 2" - 20"
Class: 150 PSI - 2500 PSI



One Piece TMBV Ball
Range: 1/2" - 6"
Class: 150 PSI - 2500 PSI



Bonnet
Range: 1 1/2" - 36"
Class: 150 PSI - 2500 PSI



Seat Ring
Range: 1 1/2" - 12"
Class: 150 PSI - 2500 PSI



Spring Button
Range: 1 1/2" - 36"
Class: 150 PSI - 2500 PSI



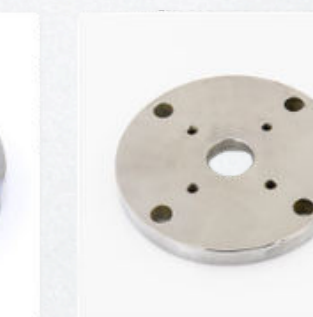
Lifting Lug
Range: 1/2" - 6"
Class: 150 PSI - 2500 PSI



Plug
Range: 1/2" - 6"
Class: 150 PSI - 2500 PSI



Gear Box Flange
Range: 1 1/2" - 36"
Class: 150 PSI - 2500 PSI



ISO Pad
Range: 1/2" - 6"
Class: 150 PSI - 2500 PSI

Forging Product



Bonnet
Range: 1 1/2" - 36"
Class: 150 PSI - 2500 PSI



Clamp
Range: 1 1/2" - 36"
Class: 150 PSI - 2500 PSI



Coupling
Range: 1 1/2" - 36"
Class: 150 PSI - 2500 PSI



Elbow
Range: 1 1/2" - 36"
Class: 150 PSI - 2500 PSI



Hinges
Range: 1 1/2" - 36"
Class: 150 PSI - 2500 PSI



Elbow Tee
Range: 1 1/2" - 36"
Class: 150 PSI - 2500 PSI



Inner Ring
Range: 1 1/2" - 36"
Class: 150 PSI - 2500 PSI



ISO Pad
Range: 1 1/2"
Class: 150 PSI - 2500 PSI



Trunnion
Range: 1 1/2" - 36"
Class: 150 PSI - 2500 PSI



Trunnion Plate
Range: 1 1/2" - 36"
Class: 150 PSI - 2500 PSI



Ball
Range: 1 1/2"
Class: 150 PSI - 2500 PSI

OUR JOURNEY

Established of
Shrinivas Engineering

Commissioned inhouse
forging plant initiating
backward integration

Launched Chakan machining
facility to enhance precision
capabilities

Expanded Forging Plant In
Chakan; listed on BSE SME

2004

2014

2022

2024

1989

2011

2020-21

2023

2025-26

Establishment of
Balaji Enterprises,
the foundation of
our expertise

Incorporated as
Shri Balaji Valve
Components
Private Limited

Acquired key assets
from Balaji
Enterprises and
Shrinivas
Engineering

Converted to a
Public Limited
Company and
successfully
launched IPO

Commissioned 3rd plant in
Chakan, Pune



INDUSTRIES WE SERVE



Oil & Gas



Petrochemical



Power Generation



Food & Beverage



Defense



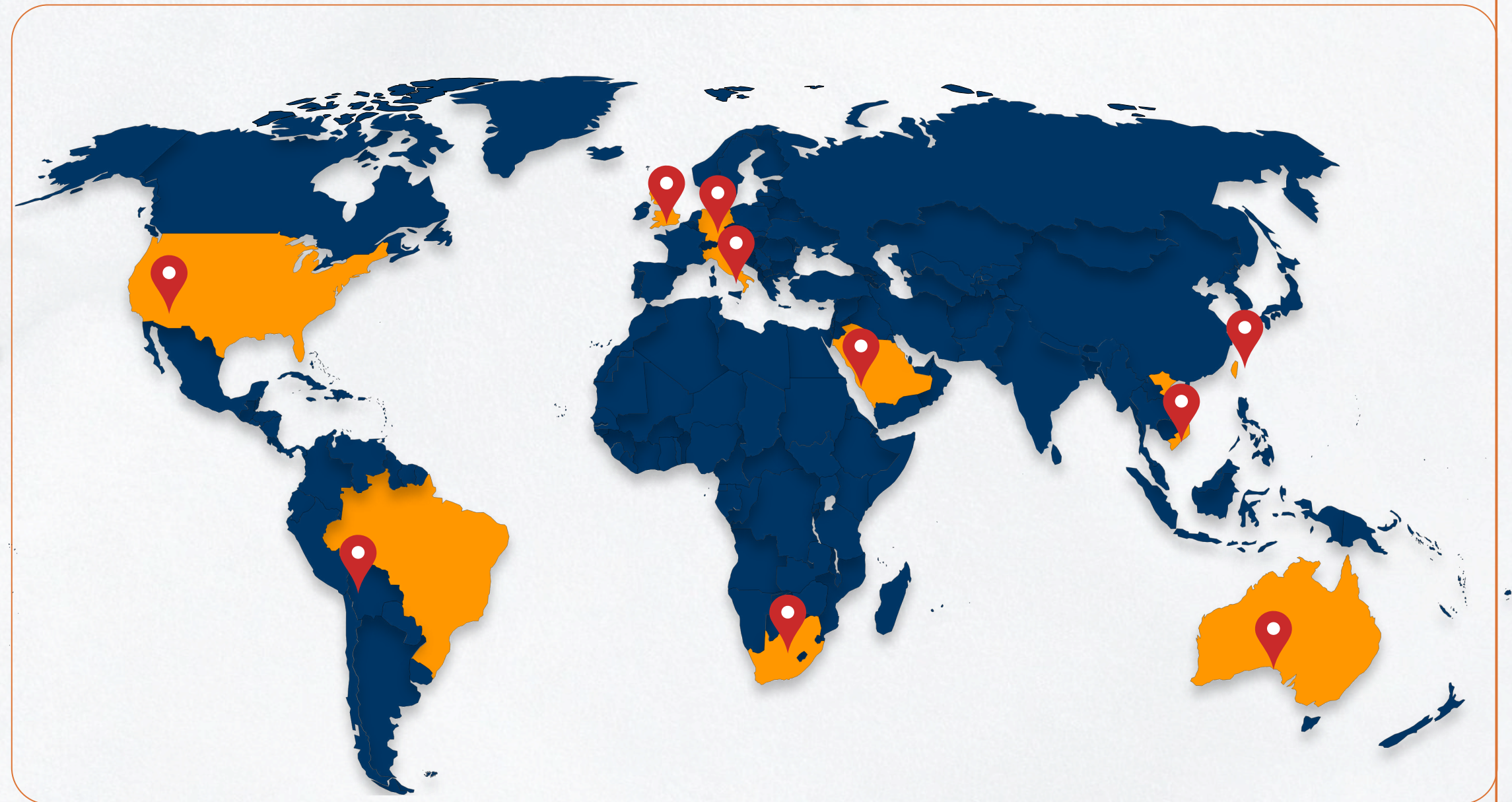
Pharmaceuticals



OUR GLOBAL REACH



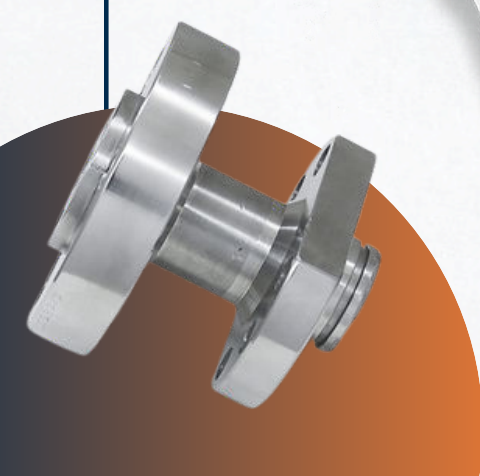
- Ahmedabad
- Mumbai
- Pune
- Hubli
- Bengaluru
- Chennai
- Coimbatore



SBVCL has expanded its reach to several international markets,

- United States
- Germany
- Italy
- Singapore
- Taiwan
- Vietnam
- South Africa
- Brazil
- United Kingdom
- Australia
- Saudi Arabia

This global footprint underscores SBVCL's commitment to delivering high-quality valve components to a diverse customer base.



LEADERSHIP TEAM



Mr. Laxmikant Sadashiv Kole
Chairman & Managing Director

With over four decades in the manufacturing industry, Mr. Kole offers extensive operational and strategic leadership. Having led through various technological and regulatory shifts, he focuses on driving strategic growth, enhancing efficiency, and fostering innovation to strengthen productivity and profitability.



Mr. Shrinivas Laxmikant Kole
Whole-Time Director & CFO

Mr. Kole combines modern business acumen with a passion for operational excellence. A Post Graduate Certificate holder in Manufacturing Management & Analytics from IIM Trichy, he leads initiatives to improve sales, customer satisfaction, and employee engagement while ensuring business continuity and strategic progress.



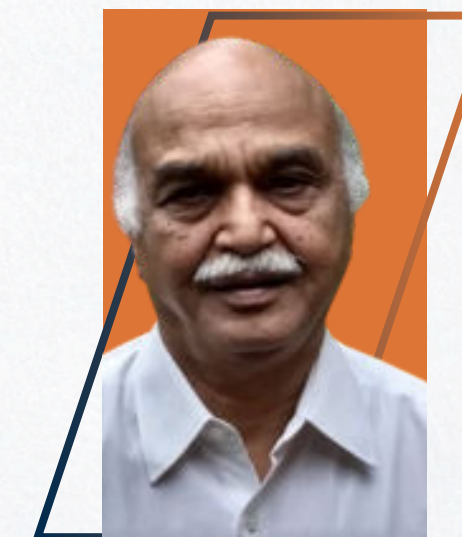
Ms. Madhuri Laxmikant Kole
Non-Executive Director

Ms. Kole brings strong expertise in administration and human resource management. She oversees infrastructure and operational functions while nurturing a positive workplace culture. Her focus on talent development and people-centric leadership supports the company's long-term growth objectives.



Mr. Sanker Parameswaran
Independent Director

A veteran corporate lawyer with over three decades of experience, Mr. Parameswaran has served as General Counsel & Company Secretary at ICICI Bank and currently advises RBL Bank. His expertise in legal, regulatory, and governance matters strengthens the company's compliance and strategic oversight.

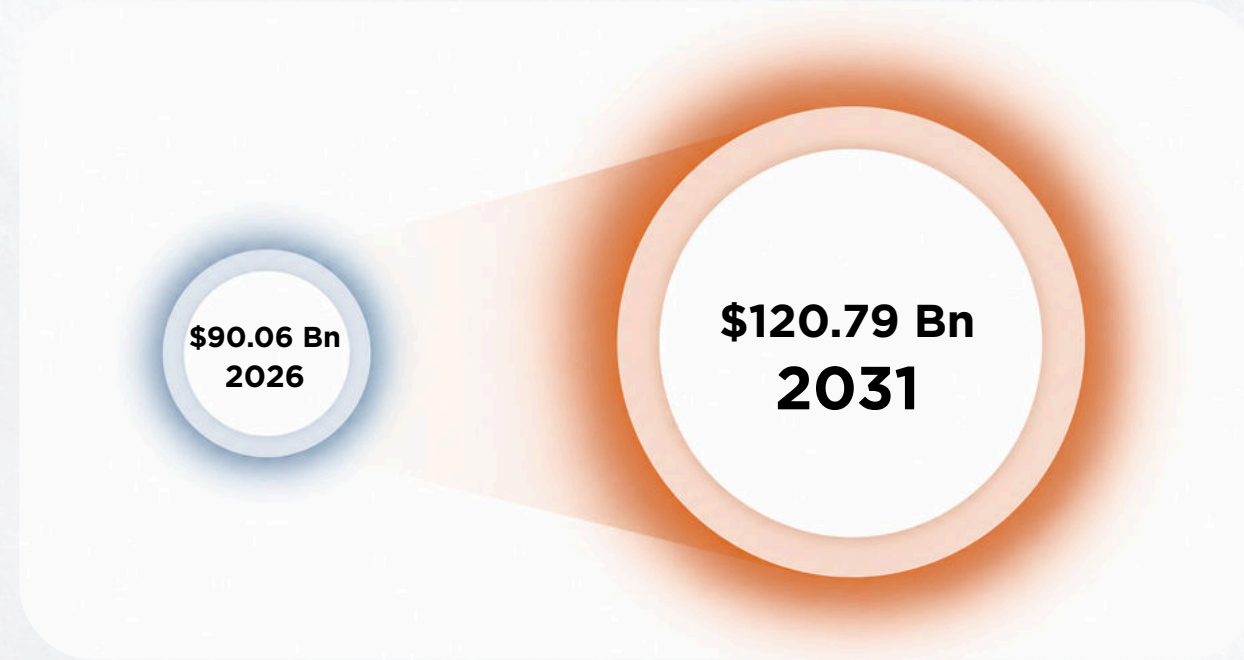


Mr. Vasudeo Ganpatdas Gujrathi
Independent Director

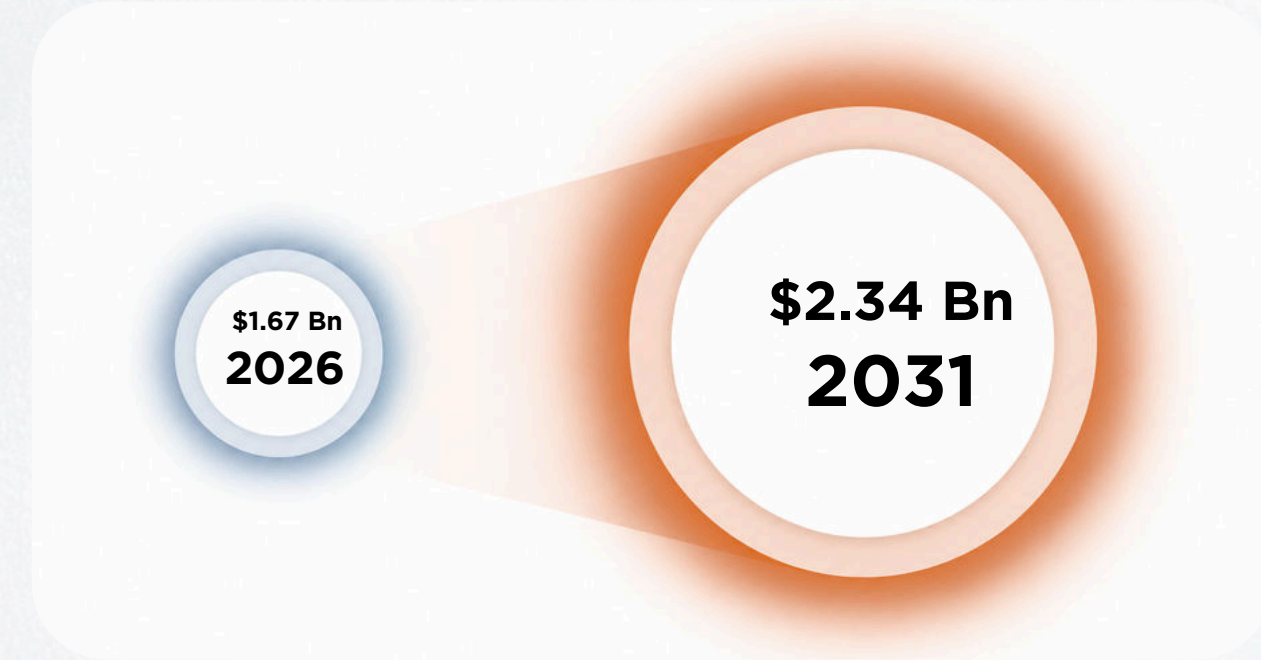
Mr. Gujrathi brings valuable experience in evaluating manufacturing processes, resource optimization, and implementing best practices. His independent perspective adds balance to decision-making and supports innovation and sustainable growth within the organization.

MARKET OPPORTUNITY

GLOBAL INDUSTRIAL VALVE MARKET



INDIA INDUSTRIAL VALVE MARKET



Government investment in Water & Waste-water Projects

Govt. programs (Jal Jeevan Mission, AMRUT 2.0) boosting demand for gate, globe & butterfly valves.



Power Sector Growth

Super- critical thermal plants and renewable projects (500 GW by 2030) spurring valve demand.



Infrastructure Expansion

Massive investments in water networks, expressways & energy systems increasing demand for durable, smart valves.



Industrial Automation

Shift toward AI-enabled and IoT-integrated smart valves improving performance monitoring & predictive maintenance.



Oil & Gas Expansion

Rising upstream & midstream investments driving need for high-pressure, emission-compliant, and sensor-equipped valves.



Chemical & Process Industry

USD 142 Bn downstream investments creating demand for specialty and corrosion-resistant valves through 2035.

EMERGING SECTORS



Smart Valves and IIoT

Integration of Sensors & Data Analytics

Enhancing control and monitoring capabilities through Industrial IoT (IIoT) technologies.



Sustainability and Efficiency

Focus on Eco-friendly Designs

Increasing emphasis on reducing emissions and minimizing energy consumption through innovative materials.



Customization and Speciality Valves

Tailored Solutions

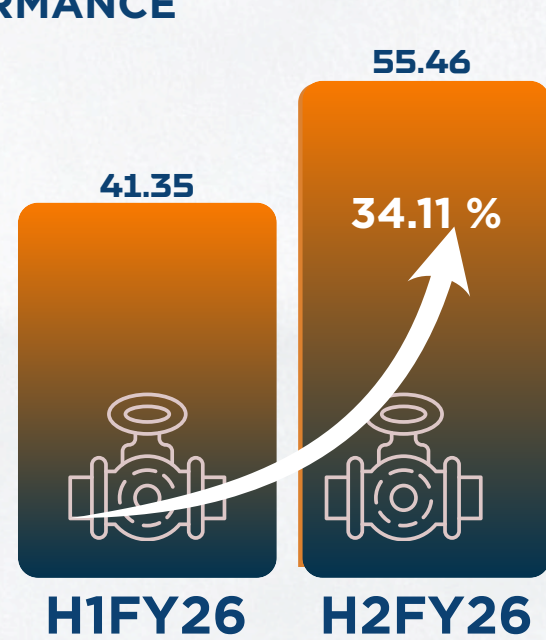
Growing demand for specialized and custom-designed valves to meet unique industry needs.



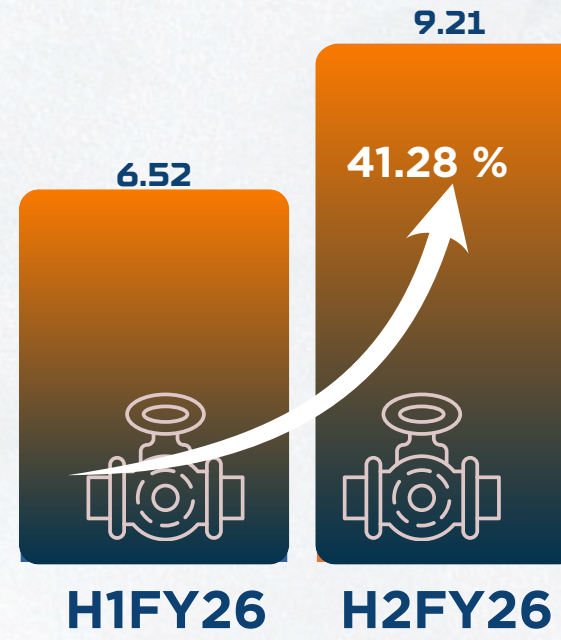
FINANCIAL HIGHLIGHTS

HALF YEARLY PERFORMANCE

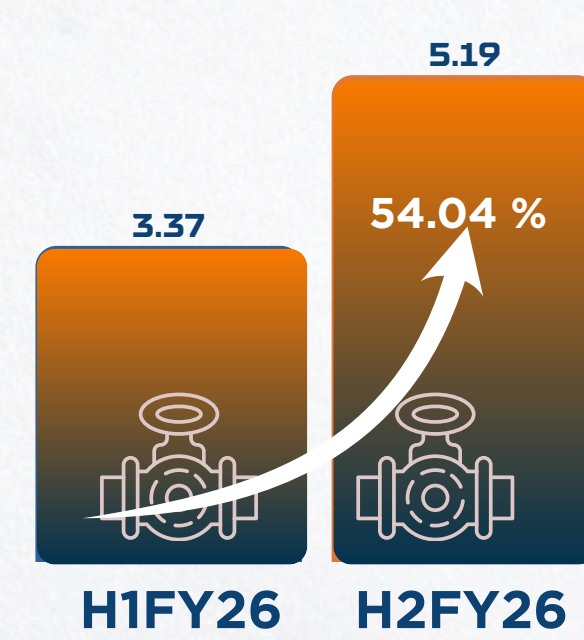
₹ in Crores



REVENUE FROM OPERATIONS

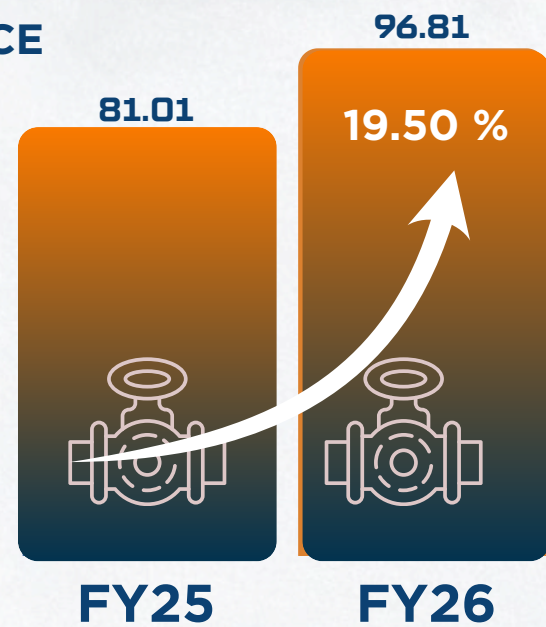


EBITDA

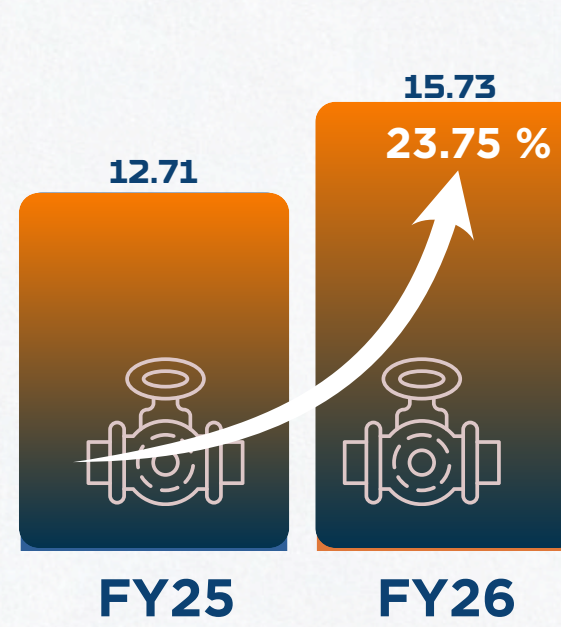


PAT

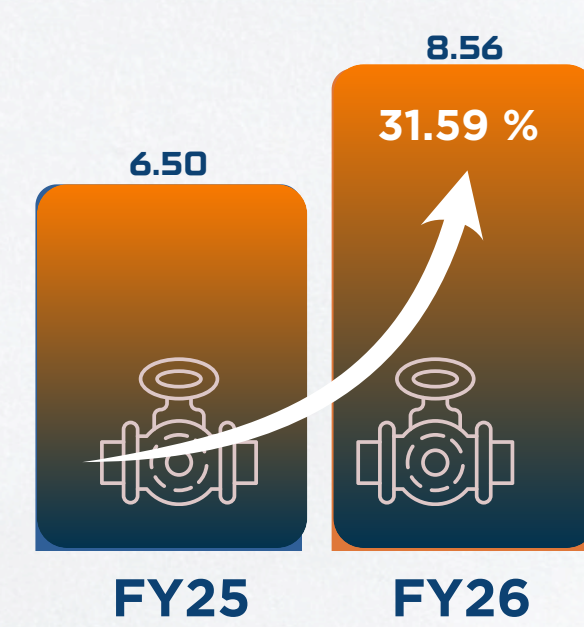
YEARLY PERFORMANCE



REVENUE FROM OPERATIONS

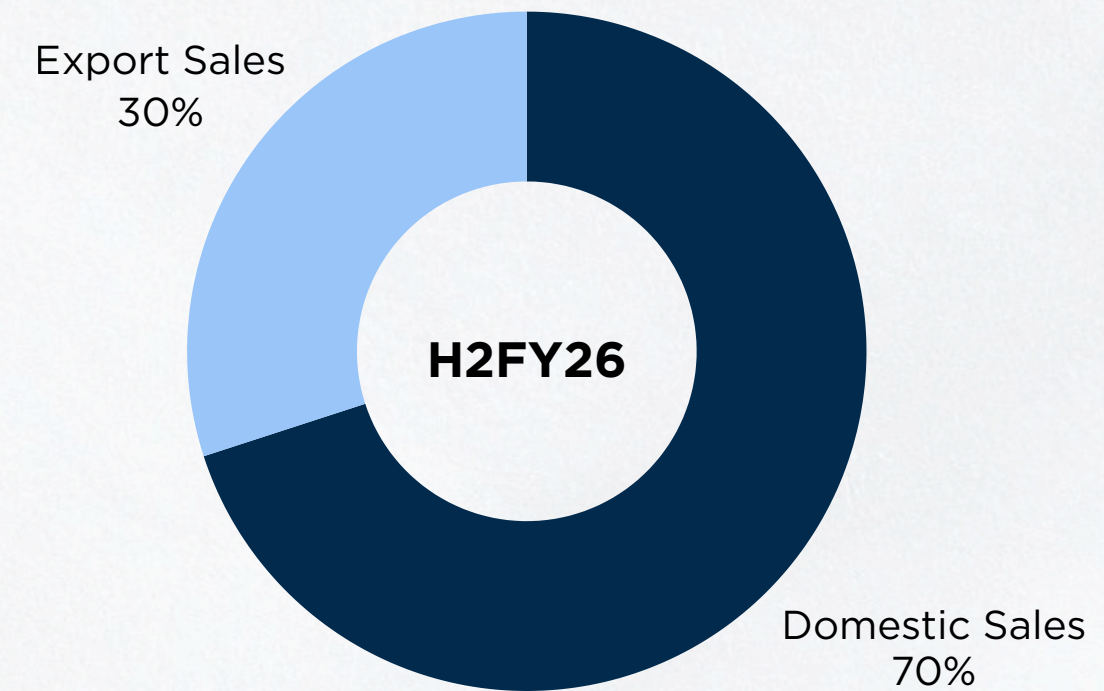
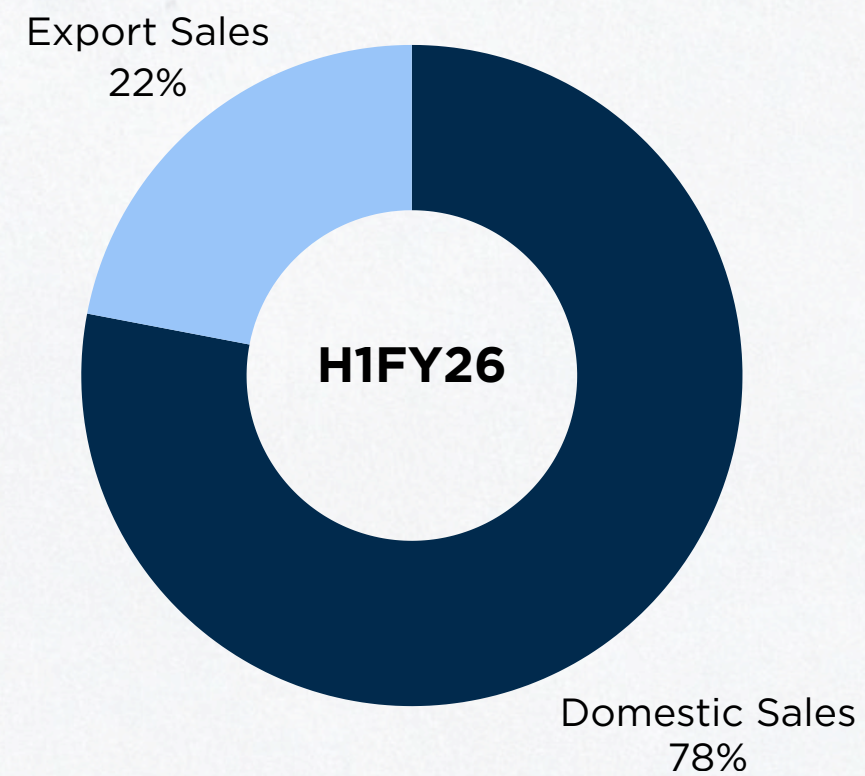
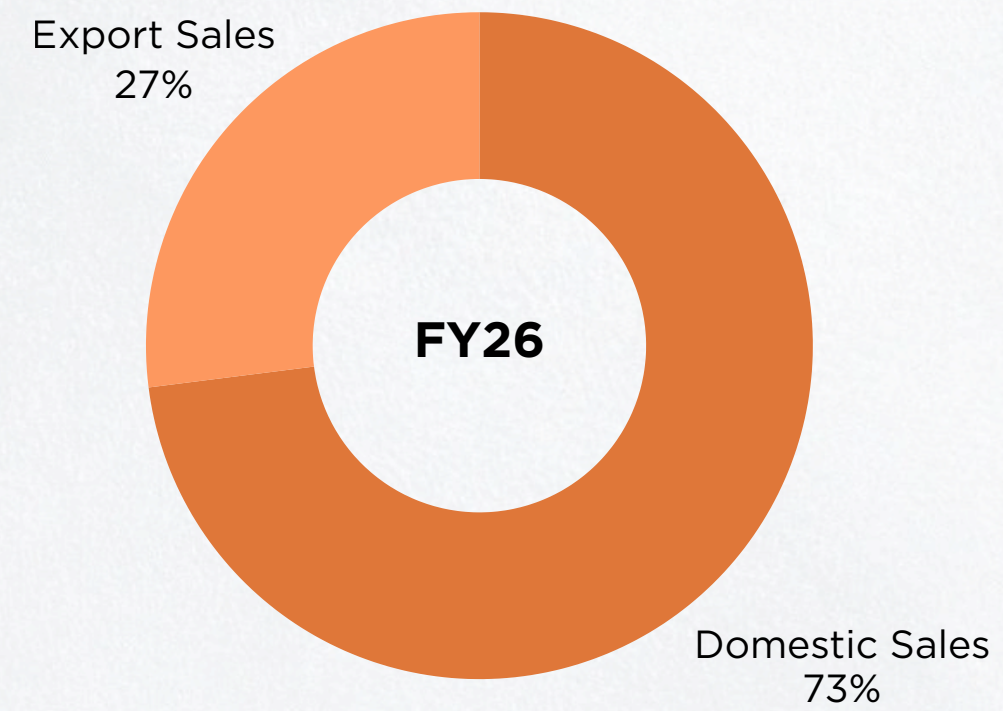
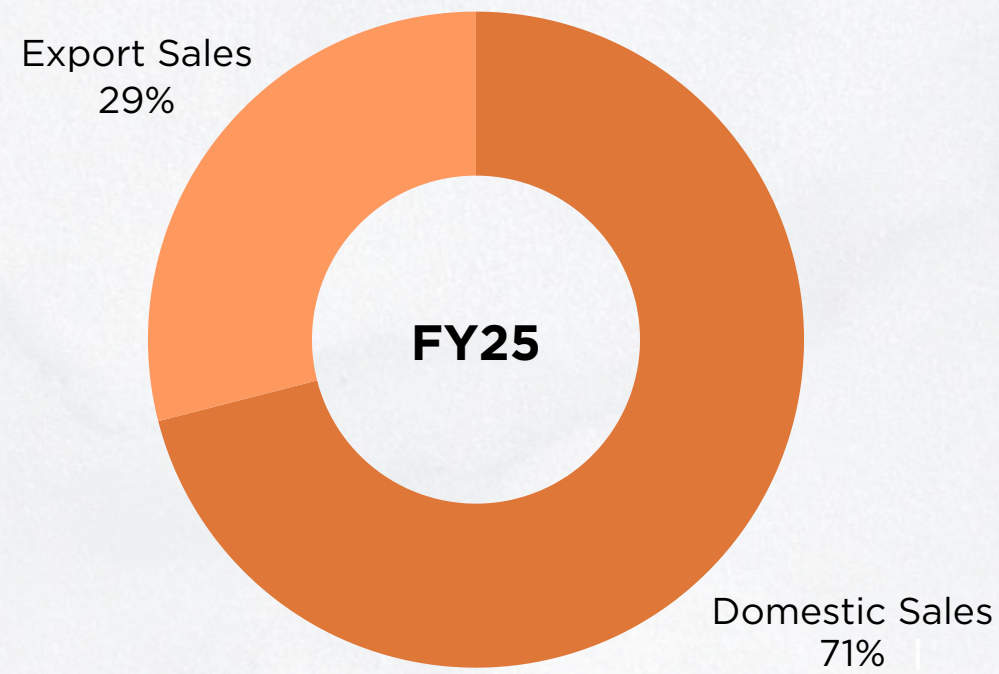


EBITDA



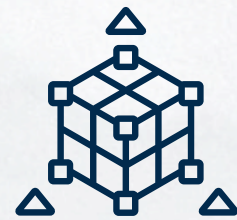
PAT

REVENUE MIX

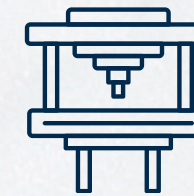


FY26 CAPACITY ADDITIONS

As part of our continued capacity expansion, SBVCL added the following key machines to its facilities during FY26, enhancing precision, throughput, and quality control capabilities.



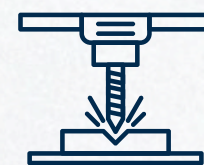
1
**5 Axis
Multitasking Machines**



2
**HMC (Horizontal Machining
Centers)**



2
**CNC
Machines**



2
**VMC
(Vertical Machining Centers)**



**Others Special Purpose Machines
& Inspection Equipment**

P&L STATEMENT

All figures are presented on a consolidated basis.

All figures in ₹ Lakhs

Particulars (Rs in Lakhs)	H2FY25	H1FY26	H2FY26	H-o-H %	Y-o-Y %	FY 25	FY 26	Y-o-Y %
Revenue From Operations	4,404.26	4,135.08	5,545.63	34.11	25.92	8,100.71	9,680.71	19.50
Other Income	84.04	62.38	90.99	45.87	8.26	135.13	153.36	13.49
Total Income	4,488.30	4,197.46	5,636.62	34.29	25.58	8,235.84	9,834.07	19.41
COGS	2,577.18	2,415.46	3,342.40	38.38	29.69	4,793.08	5,757.87	20.13
Gross Profit	1,827.08	1,719.62	2,203.23	28.12	20.59	3,307.63	3,922.84	18.60
Gross Profit Margin (%)	41.48	41.59	39.73	-	-	40.83	40.52	-
Operating & Other Expenses	1,037.80	1,067.59	1,282.07	20.09	23.54	2,036.40	2,349.66	15.38
EBITDA	789.28	652.03	921.16	41.28	16.71	1,271.23	1,573.18	23.75
EBITDA Margin (%)	17.92	15.77	16.61	-	-	15.69	16.25	-
Depreciation	204.41	187.55	251.37	34.02	22.97	368.82	438.92	19.01
Finance Cost	80.42	69.92	68.63	-1.85	(14.67)	156.64	138.55	(11.55)
Exceptional Item	0.44	-	-	-	-	0.44	-	-
Profit Before Tax	588.94	456.93	692.15	54.97	16.66	881.35	1,149.08	30.98
Tax Expenses	159.04	119.99	173.14	44.29	8.87	230.90	293.13	26.95
Profit After Tax	429.90	336.94	519.01	54.04	20.73	650.45	855.95	31.59
PAT Margin (%)	9.76	8.15	9.36	-	-	8.03	8.84	-
EPS	5.27	4.13	5.27	27.59	-	7.97	10.49	31.59

BALANCE SHEET

All figures are presented on a consolidated basis.

All figures in ₹ Lakhs

Particulars	FY25	FY26
Equity & Liabilities		
Equity		
Share Capital	816.00	816.00
Reserve & Surplus	3,618.37	4,474.32
Total Equity	4,434.37	5,290.32
Non-Current Liabilities		
Long-Term Borrowings	1,944.84	1,348.47
Long-Term Provisions	29.65	36.58
Total Non-Current Liabilities	1,974.50	1,385.05
Current Liabilities		
Short-Term Borrowings	450.38	947.13
Trade Payables	546.43	1,537.75
Other Current Liabilities	23.79	28.41
Short-Term Provisions	341.95	484.52
Total Current Liabilities	1,362.54	2,997.80
Total Liabilities	3,337.04	4,382.85
Total Equity & Liabilities	7,771.41	9,673.17

Particulars	FY25	FY26
Assets		
Non-Current Assets		
Fixed Assets	3,102.23	3,898.74
Intangible Assets	2.81	14.47
Capital Work-in-progress	86.11	636.31
Deferred Tax Assets (net)	9.77	22.08
Other Non-Current Assets	367.76	78.02
Total Non-Current Assets	3,568.67	4,649.62
Current Assets		
Current Investment	-	150.16
Inventories	779.29	1,209.98
Trade Receivables	2,462.14	2,797.52
Cash and Cash Equivalents	604.02	412.19
Short-term Loans and Advances	234.89	375.78
Other Current Assets	122.39	77.91
Total Current Assets	4,202.74	5,023.55
Total Assets	7,771.41	9,673.17

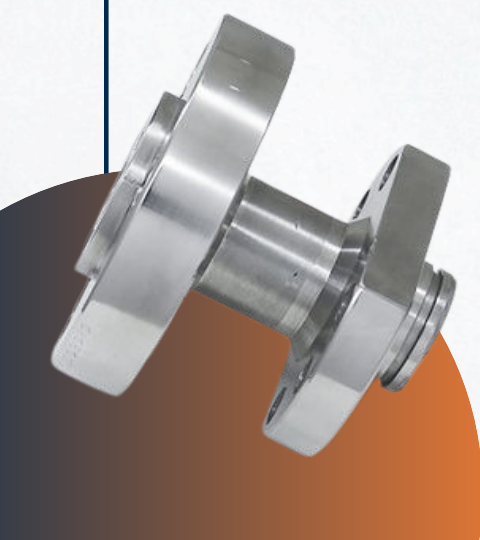
SAFE HARBOUR

This presentation and the accompanying slides (the "Presentation"), which have been prepared by Shri Balaji Valve Components Limited (the "Company"), have been prepared solely for information purposes and do not constitute any offer, recommendation or invitation to purchase or subscribe for any securities, and shall not form the basis or be relied on in connection with any contract or binding commitment whatsoever. No offering of securities of the Company will be made except by means of a statutory offering document containing detailed information about the Company.

This Presentation has been prepared by the Company based on information and data which the Company considers reliable, but the Company makes no representation or warranty, express or implied, whatsoever, and no reliance shall be placed on the truth, accuracy, completeness, fairness and reasonableness of the contents of this Presentation. This Presentation may not be all inclusive and may not contain all of the information that you may consider material. Any liability in respect of the contents of, or any omission from, this Presentation is expressly excluded.

Certain matters discussed in this Presentation may contain statements regarding the Company's market opportunity and business prospects that are individually and collectively forward-looking statements. Such forward-looking statements are not guarantees of future performance and are subject to known and unknown risks, uncertainties and assumptions that are difficult to predict. These risks and uncertainties include, but are not limited to the performance of the Indian economy and of the economies of various international markets, the performance of the industry in India and world-wide, competition, the Company's ability to successfully implement its strategy, the Company's future levels of growth and expansion, technological implementation, changes and advancements, changes in revenue, income or cashflows, the Company's market preferences and its exposure to market risks, as well as other risks. The Company's actual results, levels of activity, performance or achievements could differ materially and adversely from results expressed in or implied by this Presentation. The Company assumes no obligation to update any forward-looking information contained in this Presentation. Any forward-looking statements and projections made by third parties included in this Presentation are not adopted by the Company and the Company is not responsible for such third-party statements and projections. All Maps used in Presentation are not to scale.

All data, information and maps are provided 'as is' without warranty or any representation of accuracy, timeliness or completeness



THANK YOU



Shri Balaji Valve Components Ltd



<https://www.balajivalvecomponents.com>



ir@balajivalvecomponents.com



FINPORTAL

— We Augment Your Wealth —



Abhishek Bhutra | Himanshu Jain



+91 80006 85556 | +91 89051 81853



investorrelation@finportal.in

[Request Meeting & Investor Kit](#)