

03<sup>rd</sup> July, 2026

To,

<p><b>The Manager</b> <b>Listing Department</b> <b>National Stock Exchange of India Limited</b> <b>Bandra Kurla Complex, Bandra (East)</b> <b>Mumbai – 400 051</b></p> <p><b><u>Symbol: JASH</u></b></p>	<p><b>The Manager</b> <b>Listing Department</b> <b>BSE Limited</b> <b>Phiroze Jeejeebhoy Towers,</b> <b>Dalal Street, Mumbai - 400 001.</b></p> <p><b><u>Scrip Code: 544402</u></b></p>
--	---

**CORPORATE ANNOUNCEMENT**

**Subject:** Submission of Jash Engineering Quarterly Newsletter

Dear Sir/Madam,

We are pleased to submit herewith the Quarterly Newsletter of the Company for the quarter ended 30<sup>th</sup> June, 2026, for your kind information and record.

The said Newsletter contains updates on Product Development, Prestigious Projects and Event Highlights and other relevant information for the stakeholders.

We request you to kindly take the same on record.

This is for your information and for the public at large.

Thanking You,

Yours Faithfully,

**For JASH Engineering Limited**

**Tushar Kharpade**  
**Company Secretary & Compliance Officer**

# Pravah..... (The Flow)

## From the Desk of CMD

**F**Y26 tested our agility as well as the ability to sustain growth and maximise profitability. We faced multiple headwinds in the form of tariff changes in US (in Jan 25 and June 26) and middle east conflict, making FY26 the most turbulent year post the turmoil faced during covid. Both of these factors were a bolt from blue without warning and the resultant chaos led to indecision in US order execution / order booking, supply chain volatility, inflationary pressure in manufacturing and middle east shipping delays. As a result, we had a flat topline at Rs. 736 cr for FY26 vs Rs. 735 cr in FY25. The saving grace was our robust growth of over 18% in domestic revenue which compensated for the fall in export revenue. The flat topline resulted in lower profit after tax of Rs. 76 cr vs Rs. 86 cr in FY25. This drop was on account of external factors and not because of any limitation in our core strategy and execution.

If FY26 tested us then I believe FY27 can be our salvation. In FY27 we are targeting a growth of 19% to reach a consolidated revenue of Rs. 875 cr. With our robust order book of over Rs. 899 cr as of June 27, stability in US tariff allowing us to focus on US order execution / order booking and the end of middle east conflict, we are quite optimistic of achieving this target. The acquisition of WesTech Process Equipment



## Global Growth STRATEGY

Revenue **Rs. 1500 cr plus by FY31**

New Plant in **Saudi in FY28**

New Plant in **Houston in FY28**

(India) Pvt. Ltd, Mumbai, and Penstocks (UK) Ltd., Hinckley, UK in the beginning of year 2026 will strengthen our product offering and reach in new markets. Our expansion program in FY26 comprised of setting up of a new greenfield

manufacturing plant in Chennai and in SEZ-Pithampur, a 10 tonnes capacity induction melting facility in foundry and increase in our production capacity of CI Gates and valves by over 40%. These expansions, once stabilized, will enable company to reach Rs. 1200 cr production capability.

After establishing a strong base in USA and UK through our subsidiaries, we now aim to deepen presence in middle east and MENA region by setting up a manufacturing plant in Saudi Arabia by end of FY28. Add to this our plans for manufacturing plant in Houston, USA by end of FY28 and we are well set to achieve the target of doubling our revenue to over Rs. 1500 cr by FY31.

When Jash grows, we all grow together. For us, the water sector is not just a business – it is a responsibility and a social commitment. So together, let us engineer solutions and make products that keep communities sustainable, industries running and environment safe.

I thank all of our team for standing firm with the company in our pursuit of growth. I also thank all our investors for still believing in us and keeping their faith in us in spite of this one off hiccup in FY26. I assure all our stakeholders that, as usual, we remain committed to a sustainable and profitable growth in a transparent manner!

**-Pratik Patel**

## Product Development

### Hyperclassic Mixer for Suspension and Homogenization in the Anoxic Tank

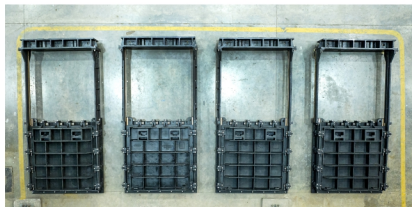
We are proud to share the successful installation and commissioning of Hyperclassic Mixers under the joint venture of Jash-Invent at 50 MLD STP Jaipur, Rajasthan, India. These vertical shaft mixers are manufactured using high-quality FRP material & are equipped with a specially engineered Hyperboloid-shaped mixing body for optimized process performance in wastewater treatment applications. The mixers operate close to the tank bottom, generating a powerful bottom flow that

effectively lifts settled deposits in suspension and the flow then rises upward at a reduced velocity, minimizing surface turbulence and preventing unwanted oxygen transfer in the liquid – A critical requirement for Anoxic and Anaerobic treatment processes. This achievement reflects Jash-Invent's commitment to providing innovative, energy-efficient and process-oriented solutions for the wastewater treatment industry.



Hyperclassic Mixer Suitable for Tank Size 32.5m (L) X 8.8m (W) X 7m SWD + 0.5m FB

## Prestigious Projects



### Mersey Estuary Pollution Alleviation Scheme in the City of Liverpool

Waterfront, our UK subsidiary, has successfully supplied 8 Nos. Cast Iron Gates of various sizes for the prestigious Mersey Estuary Pollution Alleviation Scheme in the City of Liverpool. The gates were designed to meet stringent project specifications and operational requirements and are hydraulically operated to ensure smooth, efficient, and reliable performance under varying site conditions. These gates replace existing installations and are expected to significantly enhance the operational reliability and extend the service life of the structure.

Varied Size Gates from 1000 (W) × 1000 (H) mm to 1500 (W) × 1800 (H) mm Cast Iron Gates

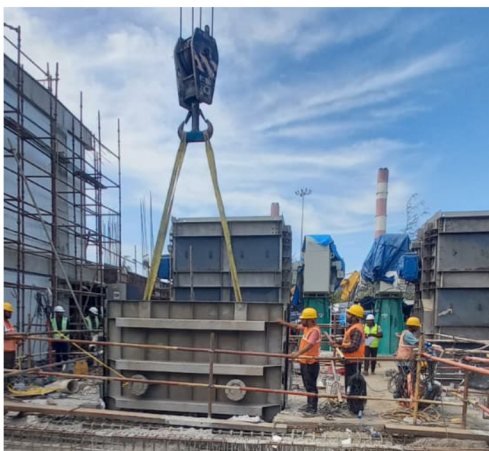


### NSF/ANSI/CAN 61 Certification for BUTTERFLY GATES

JASH Engineering is pleased to announce that our Butterfly Gates are now certified to NSF/ANSI/CAN Standard 61, the globally recognized benchmark for products used in drinking water systems. JASH's NSF/ANSI/CAN 61 Certified Product Portfolio now comprises of **Stainless Steel Fabricated Sluice Gates, Stainless Steel Open Channel Gates and Stainless Steel Butterfly Gates.**

### 800 MLD Sea Water Intake Pump House Project, Mundra

The 800 MLD Sea Water Intake Pump House project at Mundra is equipped with 2 Nos. Trash Rack Screens, 2 Nos. Stoplog Gates and 2 Nos. Travelling Water Screens installed in channels of 11,950 mm depth to ensure efficient fine screening of seawater for the desalination project. The gates and screens, manufactured in Super Duplex Stainless Steel, provide superior corrosion resistance and long-term durability under marine conditions, ensuring enhanced service life for reliable continuous seawater intake operation.



Trash Rack Screens, Stoplog Gates and Travelling Water Screens

### New Sea Water Intake-3 of Reliance Industries Ltd., Jamnagar

We supplied 10 Nos. Bar Screens and 10 Sets of Stoplog Gates for this project. These were given in SS316L construction with sacrificial aluminium anode for high-performance and long-term reliability in challenging seawater environments. The Bar Screens supplied are engineered to ensure efficient seawater intake by allowing smooth water flow while restricting particles larger than 25 mm through a precision-designed 25 mm bar spacing arrangement.



1x36 kW Archimedean Screw Turbine

### Hydropower Generation at Tailrace of Poringalkuthu Hydroelectric Project, Kerala

After 10 years of successful operation of an 11 kW Archimedes Screw Turbine at the right-hand tailrace of the project in 2015-16, Kerala State Electricity Board awarded order for setting up a new 36 kW project at the left-hand tailrace. This 36 kW screw turbine has been successfully installed, commissioned and handed over within 5 months, demonstrating quick and efficient recovery of residual hydro energy and supporting sustainable renewable power generation with reliable, low-maintenance operation.



Bar Screens and Stoplog Gates, SS316L





2x 235LPS Screw Pump

### Screw Pumps at Sewage Treatment Plant Ghazipur, Uttar Pradesh

235 LPS / 20 Million litres per day capacity Archimedes Screw Pumps have been successfully installed & commissioned at this project. Designed for reliable and low-maintenance operation, the screw pumps ensures smooth transfer of sewage and wastewater while maintaining energy efficiency and operational stability. The project highlights the growing adoption of advanced pumping technologies in modern sewage treatment systems, supporting improved sanitation and environmental management initiatives.



Deep Bed Washers (DBW)

### Hindalco Industries Ltd., Renukoot

Our subsidiary Jash Process Equipment Pvt. Ltd., (Formerly WesTech Process Equipment India Pvt. Ltd.) is currently executing a prestigious project for replacing 7 Nos. conventional Red Mud Washers of 38 m Dia with 5 Nos. 16 m Dia state-of-the-art Deep Bed Washers (DBW) at Hindalco. This large value project worth over Rs.36 crores is being executed in two phases and the first 2 Nos. Deep Bed Washers supplied in May 26 would be taken in circuit soon by Hindalco.

### Jindal Energy Project, Botswana

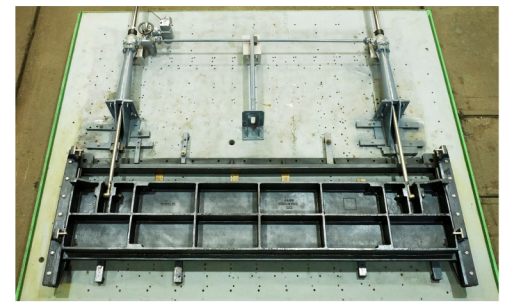
We are supplying Knife Gate and Swing Gate valves of various size to Thermax Babcock & Wilcox Energy for this project. Designed for coal-fired power applications, the Swing Gate valve supports bed ash handling at nearly 1000°C with rapid shut-off within 2 seconds, reinforcing our expertise in critical dry bulk solids flow-control solutions and strengthening our presence in the African power sector.



Varied Size Knife Gate Valves from DN 200 to DN 650 & Swing Gate Valve Size DN 200

### 418 MLD WWTF Dharavi Project of BMC, Mumbai

We have supplied 8 Nos. large sized CI electric wall thimble mounted adjustable downward opening weir gates as per AWWA C560 standard for accurate flow regulation as well as flow modulation under steady/varying operating conditions in Disposal UV Inlet Common Channel & Disc Filter Inlet Common Channel locations. These weir gates are provided with continuous sealing PTFE-clad EPDM rubber seals at both sides & bottom of gate for smooth flow regulation / modulation. This project represents a significant achievement in advanced wastewater flow control engineering for one of India's major urban wastewater treatment facilities in Mumbai city.



4000x700mm & 4000x600mm Sized CI Electric Adjustable Downward Opening Weir Gates

### Event Highlights



**Annual Meet, 2026:** Jash celebrated its Annual Meet 2026 on 11th April at our newly commissioned in-house Guesthouse and special events complex at Unit 2, bringing together employees for an evening of inspiration, recognition, and team bonding. The event highlighted key achievements and set the stage for another year of growth and success.



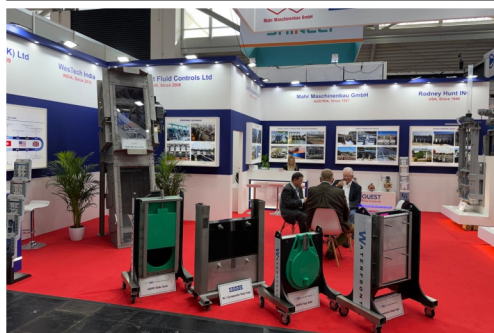
**Jash Badminton League, 2026 (Season 1):** The Jash Badminton League 2026 commenced on 20th April and concluded with an exciting finale on 6th May at our in-house sports & recreation complex at Unit 2. The tournament witnessed enthusiastic participation and remarkable performances from players across the organization. The event celebrated sportsmanship, determination and team spirit, making it a memorable success.



**Texas Water 2026, USA:** From 27th to 30th April 2026, our US subsidiary Rodney Hunt Inc. showcased its products at Texas Water Show 2026, held at Henry B. González Convention Centre, San Antonio, Texas.



**Florida Water Resources Conference (FWRC) 2026, USA:** From 26th to 29th April 2026, our US subsidiary Rodney Hunt Inc. showcased its products at Florida Water Resources Conference (FWRC) 2026, held at Ocean Centre, Daytona Beach, Florida.



**IFAT 2026, Munich:** From 4th to 7th May 2026, Jash showcased its product at IFAT-2026, the world's largest exhibition for water and wastewater technologies held at Trade Fair Centre, Munich.



**New Jersey Water Environment Association (NJWEA) 2026, USA:** From 12th to 15th May 2026, our US subsidiary Rodney Hunt Inc. showcased its products in New Jersey Water Environment Association (NJWEA) 2026, held at Harrah's Waterfront Conference Centre, Atlantic City, New Jersey.

## New Addition to Our Team in the Quarter

We welcomed new team members across locations:

- 📍 **Unit 1, Indore:** Surendra Sahu, Divyani Patil, Abhisom Debnath
- 📍 **Rodney Hunt, USA:** Thuy Ngyuen, Jose Hernandez (Houston, Texas)



**WES26, UK:** On 14th May 2026, our UK subsidiary Waterfront showcased its products at WES26 held at Telford International Centre, UK.



**Jash Turf League 2026 (Season 4):** Jash Turf League 2026 Season 4 successfully concluded on 25th May 2026 at our in-house sports & recreation complex at Unit 2 with a thrilling final between Jash Thunder and Jash Giants. Jash Giants emerged victorious, lifting the championship trophy and making the event a memorable success.



**Flood and Coast 26, UK:** From 9th to 11th June 2026, our UK subsidiary Waterfront, showcased its products at Flood and Coast 26 held at Exhibition Centre Liverpool and powered by CIWEM (The Chartered Institution of Water and Environmental Management).



**Singapore International Water Week (SIWW) - 2026:** From 16th to 18th June 2026, Jash showcased its products at SIWW-2026 held at the Sands Expo & Convention Centre, Marina Bay Sands, Singapore.

## Upcoming Events



**Kentucky-Tennessee Water Professional Conference 2026, USA:** From 19th to 22nd July 2026, our US subsidiary Rodney Hunt Inc. will be exhibiting at KY-TN WPC 2026, being held at Central Bank Centre, Lexington, Kentucky.



**One Water Ohio 2026, USA:** From 17th to 19th Aug 2026, our US subsidiary Rodney Hunt Inc. will be exhibiting at One Water Ohio 2026, being held at First Financial Convention Centre, Cincinnati, Ohio.



**International Bauxite, Alumina & Aluminium Conference and Exhibition (IBAAS 2026), Jharsuguda, INDIA:** From 9th to 11th September 2026, our subsidiary Jash Process Equipment Pvt. Ltd. will be exhibiting and would also be presenting a paper at the 14th International Bauxite, Alumina & Aluminium Conference and Exhibition (IBAAS 2026), being held at Jharsuguda, INDIA.



**Water, Wastewater & Environmental Management Expo (WWEM), UK:** From 16th to 17th. September 2026, our UK subsidiary Waterfront will be exhibiting at Water, Wastewater & Environmental Management Expo (WWEM), being held at NEC Birmingham, United Kingdom.



**Pacific Northwest Clean Water Association (PNCWA) Conference 2026, USA:** From 14th to 16th Sept 2026, our US subsidiary Rodney Hunt Inc. will be exhibiting at Pacific Northwest Clean Water Association (PNCWA) Conference 2026, being held at Spokane Convention Centre, Spokane, Washington.



**Water Environment Federation's Technical Exhibition and Conference 2026 (WEFTEC), USA:** From 28th to 30th September 2026, our subsidiary Rodney Hunt Inc. will be exhibiting at Booth Number - 641 in WEFTEC 2026, being held at Ernest N. Morial Convention Centre, New Orleans, Louisiana.