

**To,**  
**BSE Limited,**  
Floor 25, P J Towers,  
Dalal Street, Mumbai – 400001  
**Script Code: 543963**

**Subject: Submission of Investor Presentation for H2 & FY2026 - Investor Conference Call.**

Dear Sir / Madam,

Pursuant to Regulation 30 of the SEBI (Listing Obligations and Disclosure Requirements) Regulations, 2015, please find enclosed the Investor Presentation of **Shelter Pharma Ltd** in connection with the Audited Financial Results of the Company for the half year and year ended 31st March 2026.

The presentation is being made available to investors and stakeholders ahead of the Investor Conference Call scheduled to discuss the financial and operational performance of the Company.

The Investor Presentation is enclosed herewith for the information to the Exchange and stakeholders.

**Kindly take the same on record**

FOR SHELTER PHARMA LIMITED

**MUSTAQIM NISARAHMED SABUGAR**  
**MANAGING DIRECTOR**  
**DIN: 01456841**  
**Date: 17th June, 2026**  
**Place: Ahmedabad**

INVESTOR PRESENTATION

# H2 & FY 25 – 26

---

# Shelter Pharma Limited

---

Redefining Healthcare Through Innovation, Quality, and  
Sustainable Growth

- This presentation is for information **purposes only and does not constitute an offer or solicitation to buy or sell** securities of Sheltar Pharma Ltd.
- Information contained herein has been obtained from sources **believed to be reliable; however, no representation or warranty** is made regarding its accuracy or completeness.
- This presentation contains **forward-looking statements** based on current **expectations, assumptions, and projections**. Actual results may differ materially due to various **risks and uncertainties**.
- Sheltar Pharma Ltd assumes **no obligation to update any forward-looking statements** or information contained in this presentation.
- Investors are advised to conduct their **own independent assessment before making any investment decisions**.





## Company Overview

Who we are |||



## Management Team

Leadership & Experience |||



## Product Portfolio

Key Products & Offerings |||



## Investment Highlights

Why Shelter Pharma? |||



## Shelter Pharma Vision 2030

Transformation & Growth Journey |||



## Financial Highlights

Financial Performance |||

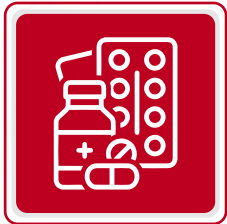
# COMPANY OVERVIEW

Shelter  <sup>®</sup>



# India's Emerging **Human and Veterinary** Healthcare Company

Established in 1965, Shelter Pharma has over six decades of experience in natural healthcare and wellness. The Company is committed to delivering safe, effective, and affordable herbal solutions through innovation, research, and quality-driven manufacturing while promoting India's rich Ayurvedic heritage globally.



**300+**

**Product add**  
Human and Veterinary  
Healthcare



**Worldwide**

**Exports Across**  
10+ Countries



**60+**

**Years of Legacy**  
Trusted Since 1965

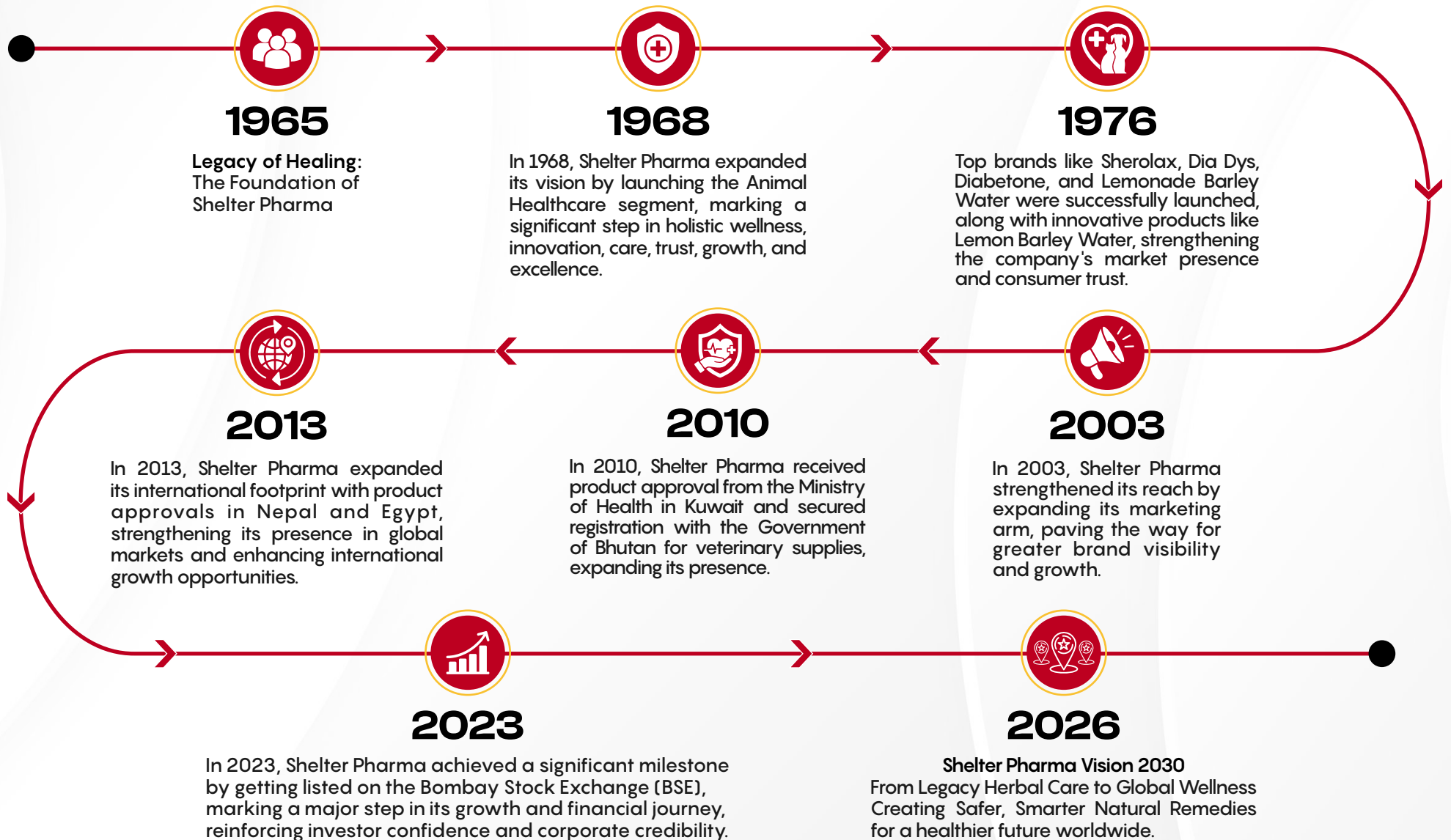


**Human & Veterinary**  
Healthcare



# Journey & Milestones

From a legacy of care to a future of global wellness –  
Our journey in Human & Veterinary Healthcare continues.



Trusted | Effective | Safe | Natural

**Global Reach.  
Trusted Medicines.  
Better Health.**



## PAN INDIA

Presence



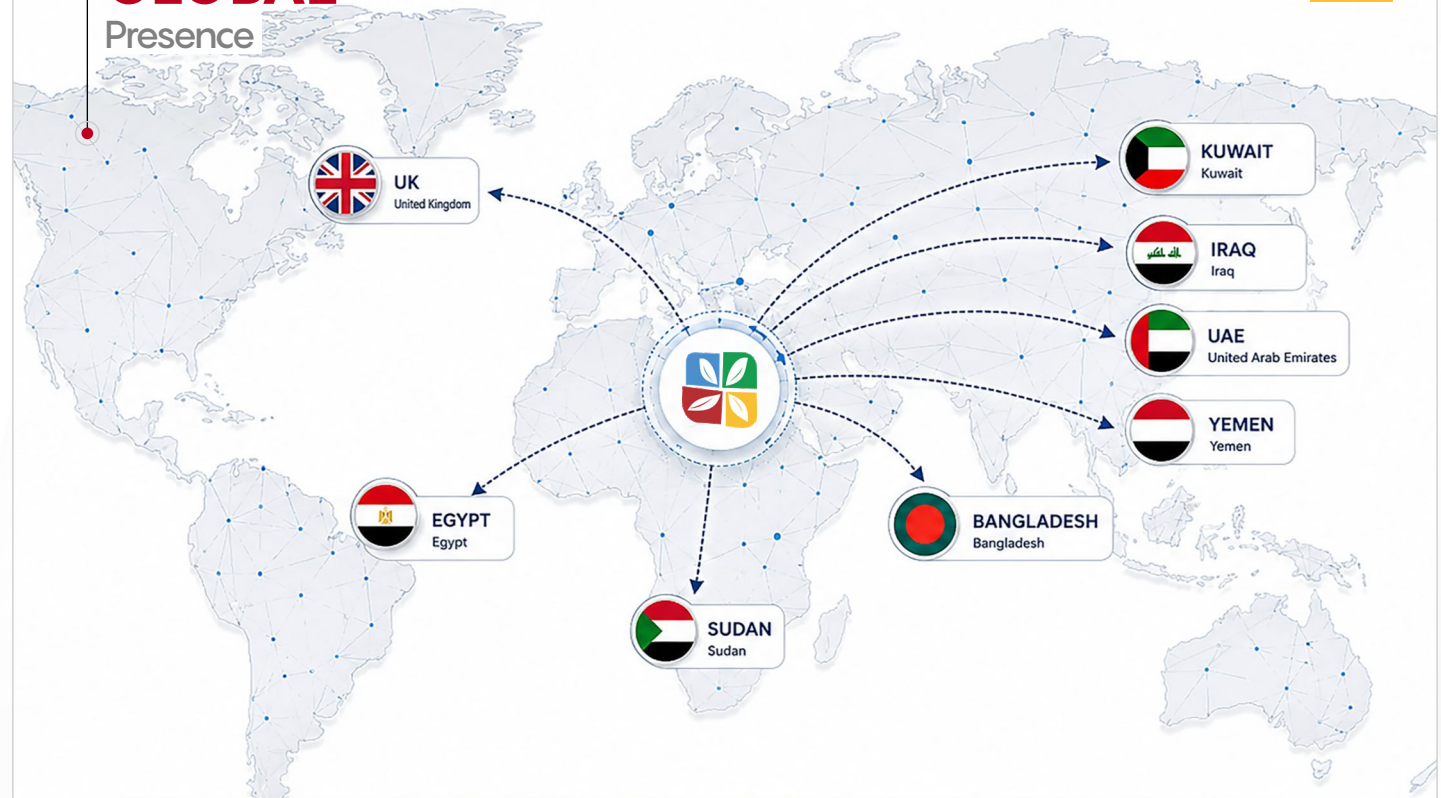
Proudly Supplying

## ACROSS INDIA

Serving healthcare across every state

## GLOBAL

Presence



**GLOBAL REACH**  
Expanding to serve healthcare worldwide



**QUALITY ASSURED**  
Committed to international quality standards



**RELIABLE SUPPLY**  
Timely & efficient delivery across borders



**STRONG PARTNERSHIPS**  
Building trust through lasting relationships

**BANGLADESH | UAE | IRAQ | YEMEN | EGYPT | KUWAIT | SUDAN | UK**



## MUSTAQIM

Sabugar – PROMOTER

- Founder Family
- Managing Director
- 30+ years of visionary leadership in the pharma sector, driving growth, innovation and excellence



## SHAKEEL

Sabugar – Promoter & WTD

- Promoter & Whole Time Director
- Dedicated new leadership with drive of innovation / excellence
- Guiding the future growth of the company

# Product Portfolio

Quality.

Innovation.

Care.

Delivering effective healthcare solutions for healthier lives and stronger communities.



# Human Product Portfolio

Comprehensive Portfolio of Ayurvedic, Herbal  
& Human Healthcare Solutions



## Human Products



**Sherolax**  
Tablets



**Sheltidin**  
Cough Syrup



**Livodin-12**  
Syrup



**Happy Forte**  
Capsule



**Gynoshel**  
Liquid



**Gasoshel**  
Tablet



**Diabetone**  
Tablet



**Cocoment**  
Ointment



**B-Kleen**  
Liquid



**Bipinyl**  
Capsule



**Banotone**  
Syrup



**Baldeepak**  
Children Tonic



**Adalpin-SP**  
Tablets



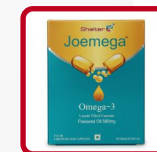
**Barley Water**  
Refreshing Diuretic



**All Vitamin**  
Tablet



**Hairol**



**Joemega**  
Omega-3



**Stonyl**  
Tablet

# Veterinary Product Portfolio

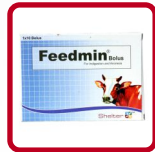
Comprehensive Portfolio of Veterinary & Animal Healthcare Solutions



## Veterinary Products



**Kafol Mixture**



**Feedmin**  
Bolus



**Regulin**  
Bolus



**Utrona**  
Bolus



**Immuno-UP**  
Liquid



**NKG Forte**  
Gout Care



**Multi-Tox Plus**  
Liquid



**Lactona**  
Bolus



**Shelodex**  
Ultra



**Multina**  
Liquid



**VYMET**  
Oral



**Anical**  
Oral



**Amino Vit WSP**  
Powder



**Sheltro LYTE**  
Oral



**Feedvet - M**  
Plus S-D3 Powder



**Agrical**  
Powder



**Lactocal Gel**  
Super

- Trusted Quality
- Science Backed
- Natural & Safe
- Patient Centric
- Better Health Outcomes

# MANUFACTURING CAPACITY

SINGLE SHIFT | PER ANNUM



## TABLETS

**35,80,00,000**  
Nos.



## LIQUID

**8,41,000**  
Litres



## POWDER

**9,60,000**  
kg



## CAPSULE

**2,40,00,000**  
Nos.



## OINTMENT

**1,08,000**  
kg

**MAXIMUM  
CAPACITY**



# INVESTMENT HIGHLIGHTS

## Why Shelter Pharma?



### Legacy & Trust Since 1965

- 60+ Years of Experience
- Trusted Ayurvedic Brand
- Established in 1965



### Diversified Product Portfolio

- 300+ Products
- Human & Veterinary Healthcare
- Nutraceutical, Herbal, OTC & Specialties



### Ayurveda & Innovation Driven

- Combining Ayurveda with modern research
- Advanced Science & Innovative Solutions
- Effective Healthcare



### Strong Manufacturing & Quality Standards

- GMP Certified
- ISO 9001:2015 Certified
- HACCP Compliant
- State-of-the-art Facility & Regulatory Compliance



### High Growth Financial Performance

- Consistent Revenue Growth
- Improving Profitability
- Pan-India Distribution, Now Launches & Stronger Execution



### Asset-light & Nearly Debt-free

- Strong Balance Sheet
- Low Debt Levels
- High Operating Efficiency
- Better Returns on Capital



### Expanding Domestic & Export Presence

- Pan-India Presence
- Exports to 10+ Countries
- Strong International Footprint



### Continuous Product Innovation

- New Product Launches
- Advanced Formulations
- Customer-Centric Solutions
- Nutraceuticals & Herbal



### Strategic Focus On Natural Healthcare

- Rising Demand for Natural, Herbal & Preventive Healthcare
- Long-term Sustainable Growth Strategy



### Scalable Growth Platform

- Strong Brand Recall
- Wide Distribution Network
- Scalable operations for next phase of growth

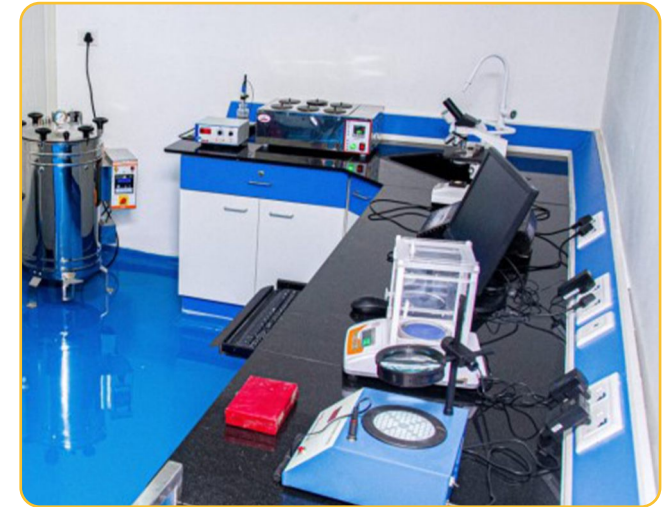
# Shelter Pharma Vision 2030

Innovate | Expand | Excel



## Innovation And Product Development

Shelter Pharma Ltd continues to focus aggressively on innovation and product development, with ongoing investments in advanced formulations, research-driven healthcare solutions, and modern nutraceutical technologies aimed at meeting evolving global healthcare demands.



## Capacity Expansion

As part of its long-term expansion strategy, the company has acquired land near Himmatnagar, Gujarat, for the development of its second manufacturing facility. The upcoming unit is expected to significantly enhance production capacity and position Shelter Pharma among the rapidly growing healthcare manufacturers in India.



# Shelter Pharma Vision 2030

Innovate | Expand | Excel



## New Product Launched

The company is also preparing to launch a new range of high-value nutraceutical and herbal healthcare products using advanced technologies and innovative formulations, further strengthening its presence in premium wellness and preventive healthcare markets.



## Ambition & Financial Goal

With an ambitious long-term growth vision, the company aims to scale its operations substantially and is targeting annual revenues of

**₹ 200 Crore** by the year 2030

through capacity expansion, innovation-driven product launches, and global market penetration.

# H2 OF FY26 PERFORMANCE



Revenue From  
Operations

**39.84**

• ₹ CRORE •



EBITDA

**6.47**

• ₹ CRORE •



PAT

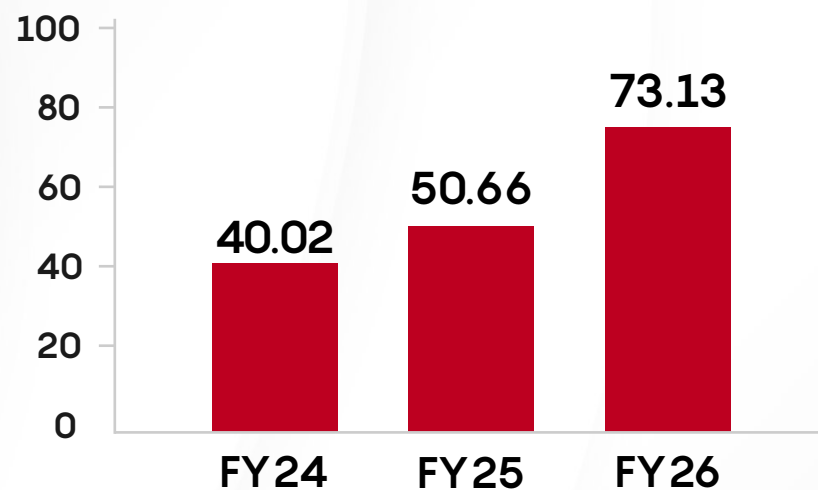
**4.53**

• ₹ CRORE •

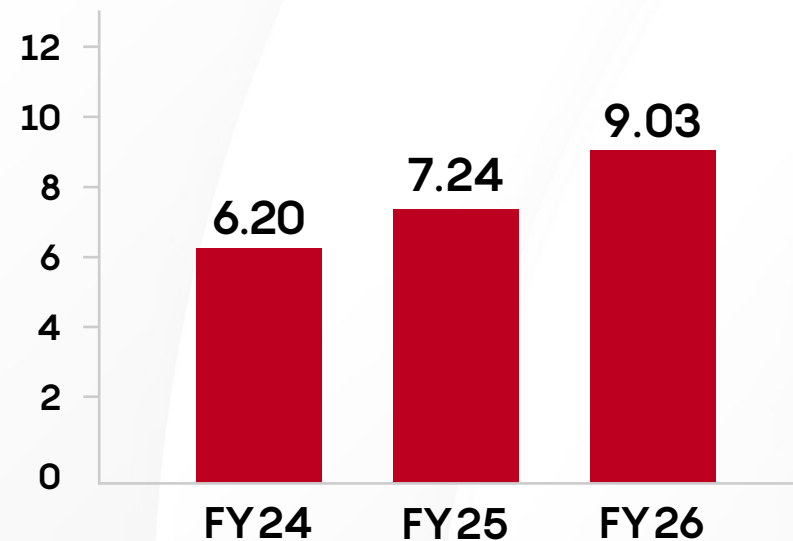
# Financial Highlights



Strong growth. Improving profitability. Debt-light balance sheet.



REVENUE FROM OPERATIONS (₹ Crore)



NET PROFIT (₹ Crore)

## Key Financial Takeaways

Revenue Growth

**44.35%**

YOY

**15%** PAT Growth

3 YEARS COMPOUNDED

**26.04%** ROCE

AVERAGE 3 YEARS

**19.39%** ROE

AVERAGE 3 YEARS

**ALMOST DEBT - FREE**

Debt Position FY25 & FY26

# Financial Highlights



PARTICULARS (₹ Crore)	FY 24	FY 25	FY 26	3 YEARS CAGR/TRACK RECORD
Revenue from Operations	40.02	50.66	73.13	Revenue Growth (3 Years Compounded): 26%
EBITDA	8.58	10.07	12.72	—
EBITDA Margin (%)	21.44%	19.88%	17.39%	—
Net Profit (PAT)	6.20	7.24	9.03	PAT Growth (3 Years Compounded): 15%
Net Margin (%)	15.49%	14.29%	12.35%	—
ROCE (%)	32.39%	24.48%	20.35%	ROCE (Average 3 Years): 25.74%
ROE (%)	24.61%	18.43%	15.13%	ROE (Average 3 Years): 19.39%
Debt Position	Low	Almost Debt Free	Almost Debt Free	Debt-Light Balance Sheet



Shelter Pharma Ltd. has delivered strong revenue and profit growth while maintaining a debt-light balance sheet, positioning the company for its next phase of scalable expansion in the Ayurvedic and Natural Healthcare industry.



# Financial Highlights



## Income Statement

Particulars	Mar'25	Mar'26	YOY % Growth
Revenue from operations	50.66	73.13	44.35%
Total Expense	40.59	60.41	
<b>EBITDA</b>	<b>10.07</b>	<b>12.72</b>	
EBITDA %	19.88	17.39	
Other Income	0.01	0.02	100.00%
Finance Costs	0.13	0.11	-15.38%
Depreciation & amortization	0.27	0.41	51.85%
<b>Profit before tax</b>	<b>9.68</b>	<b>12.22</b>	<b>26.24%</b>
Tax %	25.21	26.19	0.98%
<b>Net Profit</b>	<b>7.24</b>	<b>9.03</b>	<b>24.72%</b>
EPS in Rs	6.26	5.44	

## Balance Sheet (Yearly)

Particulars	Mar'25	Mar'26	YOY % Growth
Equity & Liabilities			
Equity Capital	11.56	16.61	43.69%
Reserves	31.16	60.02	92.62%
Borrowings +	1.04	0.8	
Other Liabilities +	4.58	6.8	
<b>Total Liabilities</b>	<b>48.34</b>	<b>84.23</b>	<b>74.24%</b>
ASSETS			
Fixed Assets +	5.96	7.14	19.80%
CWIP			
Investments	0.68	0.68	0.00
Other Assets +	41.7	76.41	83.24%
<b>Total Assets</b>	<b>48.34</b>	<b>84.23</b>	<b>74.24%</b>



**SHELTER PHARMA LIMITED**

**HUMAN & VETERINARY HEALTHCARE**

**CS Aarefa Kutub Kapasi**

**✉ [cs@shelter.co.in](mailto:cs@shelter.co.in)**

**Investor relations advisors**



**FINANCIAL MINDSS<sup>®</sup>**  
**(A JaiBharti Group Co.®)**

**CA CS LLB Praveen Ranjan**

**☎ +91 9967487950**

**✉ [ir@financialmindss.com](mailto:ir@financialmindss.com)**

◆ **Thank You** ◆