

To,
Listing Department
BSE Limited
Phiroze Jeejeebhoy Towers,
Dalal Street, Fort,
Mumbai - 400 001
Symbol: KASTURI
Code: 544688

Date: June 20, 2026

Subject: Investor Presentation for the Investor Conference.

Dear Sir/Madam,

In continuation to our earlier intimation dated June 15, 2026, regarding the upcoming Investor Meet, and Pursuant to Regulation 30 of SEBI (Listing Obligations and Disclosure Requirements) Regulations, 2015 as amended from time to time, please find the enclosed investor presentation for the Investor Conference scheduled to be held on June 20, 2026.

The same will be available on the website of the Company at www.steelfiberindia.in

Request you to kindly take the afore-mentioned on your records.

Thanking you,

For Kasturi Metal Composite Limited

Madhu Awasthi
Company Secretary & Compliance Officer
Membership No. - A28386

Place: Amravati

REINFORCING NATION



DURAFLOOR
CONCRETE SOLUTIONS
BUILT STRONG! LASTS LONG!

ENGINEERED FIBERS, AND PERFORMANCE FLOORS

FY26 Performance, Innovation, Expansion & Growth Strategy



Company Overview

Kasturi Metal Composite Limited (KMCL) is an integrated engineered materials company specializing in Steel Fiber Reinforced Concrete (SFRC). KMCL goes beyond commodity manufacturing — delivering end-to-end solutions through a three-stage model:

Manufacturing → Design → Execution.

as "From Commodity Manufacturing to Engineered Materials."



Manufacturing & Design

High-performance steel fiber production (Duraflex, Durabond) combined with engineering design services — specifying the right SFRC solutions for each infrastructure application.



Execution & Solutions

Full project execution, testing & certification through Durafloor — transforming KMCL from a product supplier into a trusted infrastructure solutions partner.

Product Portfolio

Duraflex - Steel fiber - fiber reinforcement for durable concrete



- Duraflex Crimped Steel Fiber



- Duraflex Loose Hookend Steel Fiber



- Duraflex Glued Hookend Steel Fiber

Increases load-bearing capacity, reduces cracks & optimizes your thickness .

Durabond Steel Wool - fiber for friction Linnings



**SAFETY AND HIGHER
PERFORMANCE
GUARANTEED WITH**

DURABOND™
STEEL WOOL FIBER

Steel Wool Fiber Advantages

- 1 Provides Excellent structural Reinforcement and high thermal stability
- 2 Improves high temperature fade resistance and reduces brake pad wear
- 3 Is cheapest metallic fiber and cheapest in manufacturing cost



Product Innovation – Delta Loop-End Steel Fiber



- Patent Filed In June 2025.
- Expedite Review Filed In May 2026
- Commercial production started in Jan 2026
- 200 MT orders executed
- Export enquiries received
- Premium pricing potential



- Tensile Strength: >2,200 MPa with loop-end geometry for superior anchorage

- Enhanced crack control and higher residual flexural strength

Delta Loop End: The Next Evolution in Concrete Reinforcement.

Surpassing the limits of traditional Hook End anchorage with inverted loop geometry.



Micro Steel Fiber

UHPC

SIGMA
SERIES

SIGMA Series represents advanced range of micro steel fibers engineered for ultra-high performance concrete (UHPC), reactive powder concrete (RPC), and critical structural applications.

Designed with high tensile strength wire and precision coating technology, SIGMA fibers deliver superior crack control, enhanced durability, and exceptional post-crack performance.



The Future factory

Supporting India's growing
infrastructure growth

- Machines Under Installation



**Plant-4 capacity
expansion taking capacity
from 4000 MT to 10000 MT**

**Expected commissioning by
Sep 2026**

Add 6000 MT/year with high-speed dry SLM technology (2.5 times faster than current production lines)

Key Benefits:

- Lower per-unit manufacturing costs,
- higher workforce productivity,
- superior product consistency & quality control

— enabling KMCL to scale efficiently and serve high-specification customers.

Durafloor Forward

Integration

KMCL's Durafloor division moves beyond product supply to become a full solutions partner — offering design assistance, flooring execution, testing & certification, and product specification influence. This forward integration transforms KMCL's customer relationships and drives superior margins.



Value Creation

Higher customer stickiness and repeat business, better margins vs. commodity supply, deeper market insights, and transformation into a trusted solutions partner.

DURAFLOOR PRODUCTS: INTEGRATED FLOORING COMPONENTS



White-label Durafloor branded additives, fibers and joint systems for SFRC floors

FIBER SOLUTIONS

DURAFLEX: STEEL FIBERS FOR REINFORCEMENT — IMPROVES TOUGHNESS AND CRACK CONTROL

DUROCRETE: POLYPROPYLENE FIBERS — REDUCES PLASTIC SHRINKAGE AND FINISHABILITY



Duraflex - Steel Fibers

JOINT AND LOAD TRANSFER

DURASHIELD: ARMOUR JOINT — DURABLE EDGE PROTECTION AND MOVEMENT CONTROL

DURASLEEVE: PLATE DOWEL SLEEVE — ENSURES DOWEL ALIGNMENT AND LOAD TRANSFER



Durashield - Armour Joint



Durasleeve - Plate Dowel Sleeve

CHEMICAL ADDITIVES AND CURING

DURASHRINK: SHRINKAGE ADDITIVE — LOWERS DRYING SHRINKAGE RISK

DURACURE: CURING COMPOUND — ENHANCES STRENGTH DEVELOPMENT AND SURFACE QUALITY



Duracure - Curing Compound



GLIMPSES OF SERVICES



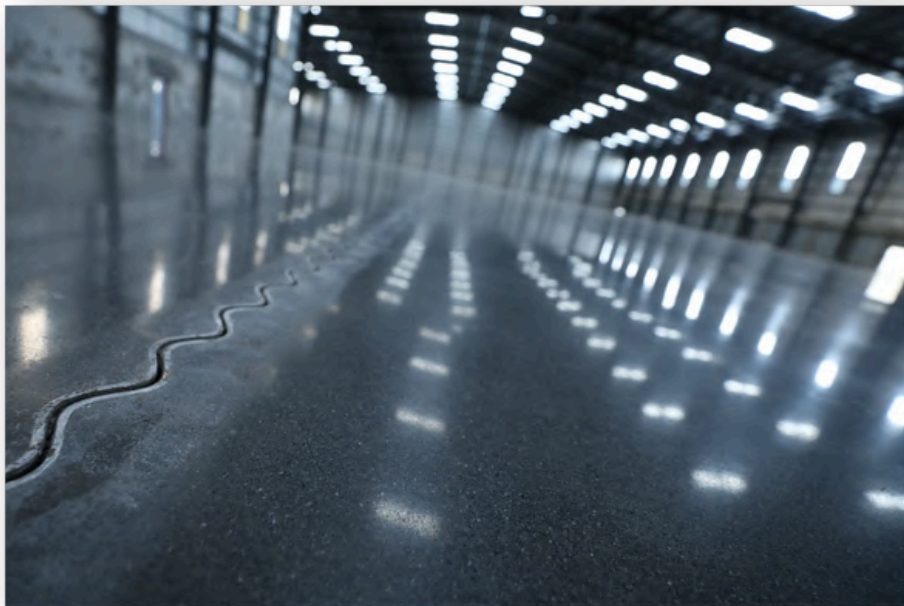
**FM1/ FM2 Grade -
Laser Screed Floors**



**VNA Floors -
DM1/DM2 Category**



**Steel Fiber Reinforced
Concrete Flooring**



Jointless Floors



**Concrete Polishing
and Densification**



Tests and Certifications



FY26 Financial

Performance

₹ 65.3 Crore

Total Revenue

₹ 3.96 Crore

Net Profit

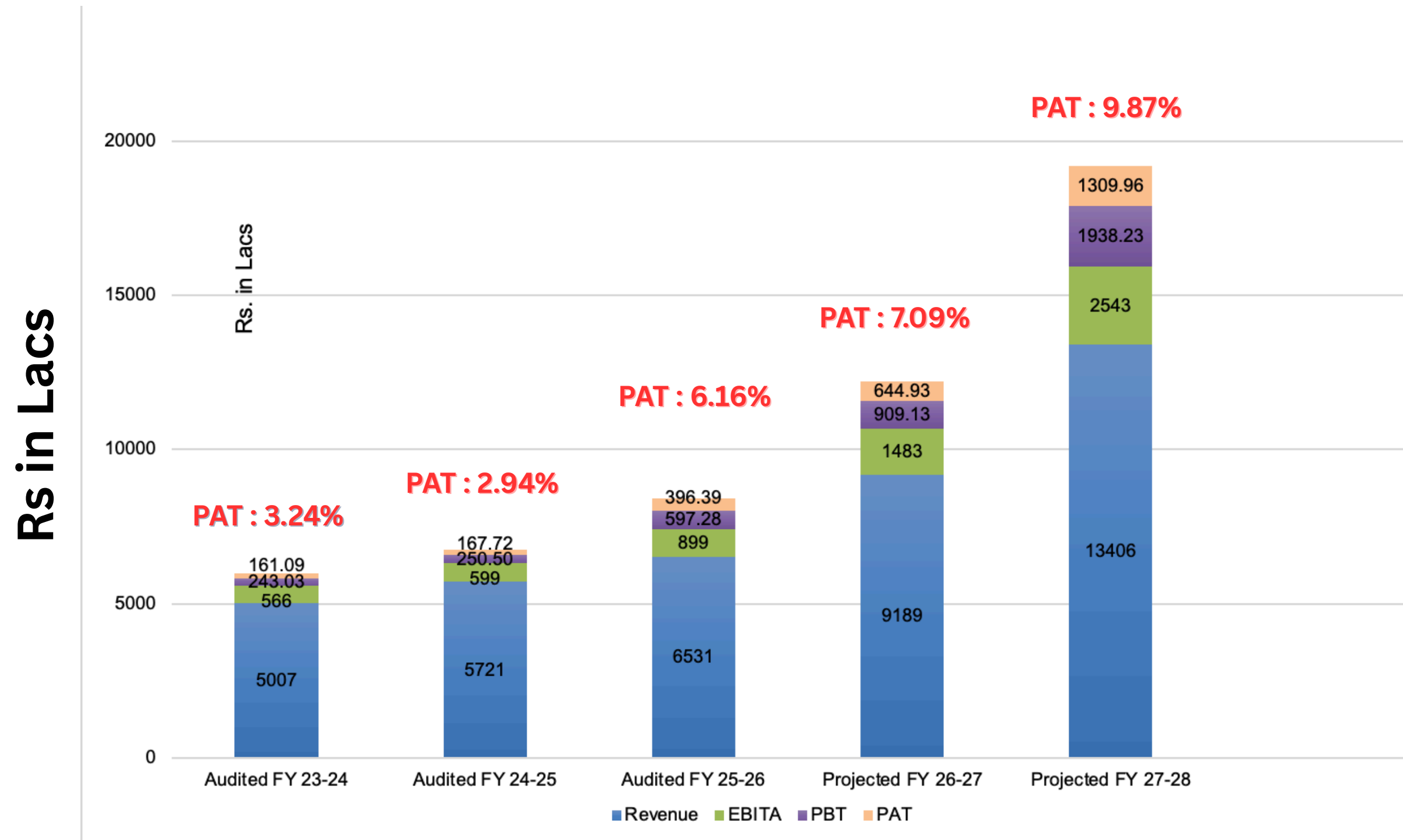
- **3-Yr PAT Growth: +144%**
Revenue Growth: +31%

PAT surged from ₹1.62 Cr to ₹3.96 Cr, a remarkable +144% growth over the same period.

Revenue grew from ₹49.7 Cr (FY23) to ₹65.3 Cr (FY26), a +31% increase.

profitability growing faster than revenue, demonstrating strong operational leverage.

Financial Performance



Performance for Past 3 years and Projections for 2 years

Strong Order Book and Forward Visibility

Near-term revenue visibility with
medium-term export scaling

Durafloor: ₹17+ Cr Order pipeline

Significant near-term commercial funnel

KMCL: 8 Cr+ firm orders in a 3 months window

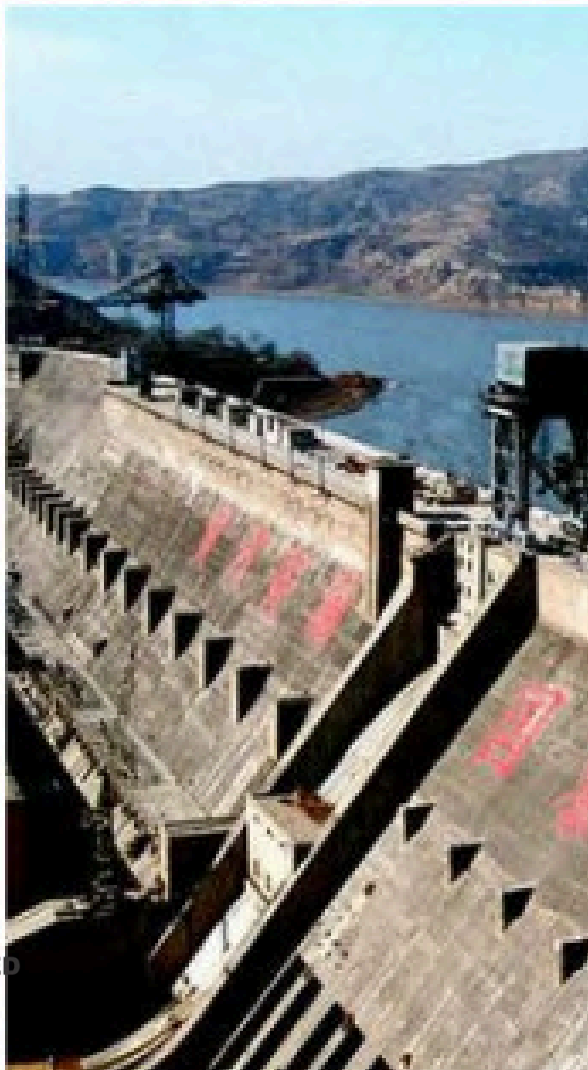
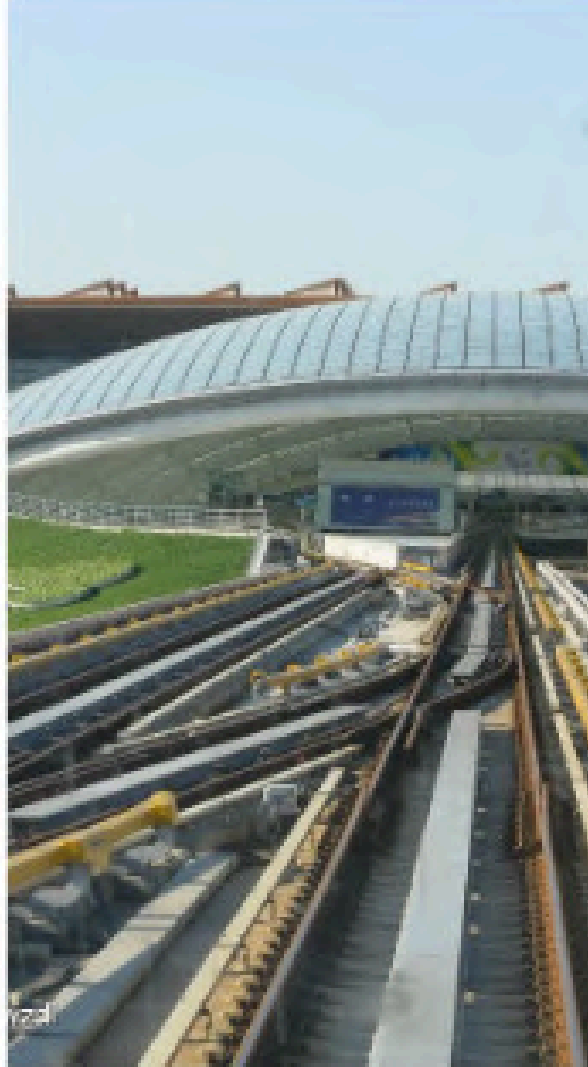
Short-term revenue conversion expected

UHPC precast: new EPC contacts underway

Business development for higher-margin products

GCC: 2 New Work orders received

Geographic export traction in medium term



Multi-Sector Tailwinds for KMCL

Diversified demand reduces cyclicalty and enables premium commercialization

Civil

Tunnels and shotcrete: fibers for crack control and impact resistance

UHPC precast, bridge decks and girders: fibers for tensile reinforcement and durability

Water retaining structures: fibers for impermeability and long life

Transport

High speed rail: fibers for fatigue resistance and strict specs

Bridge decks and UHPC girders (cross-list): fibers for load capacity and reduced maintenance

Industrial and Defence

E-commerce warehouse floors: fibers for heavy-duty abrasion and rapid commissioning

Automotive friction composites: fibers for thermal stability and consistent performance

Defence infrastructure: fibers for robustness under harsh specifications

International Growth Strategy

Strong export momentum, Premium Pricing

GCC orders secured

Export validation and regional market traction .
Durafloor Executing Work Orders in **Dubai** and
Supplies started for **Glued** and **Loop End Steel Fiber**

KMCL pursues a three-tier geographic expansion:
India as the core market with established brand
equity, the Middle East as an emerging high-
growth opportunity, and selective export markets
to build international credentials.



India Market

Core Market & Brand
Strength

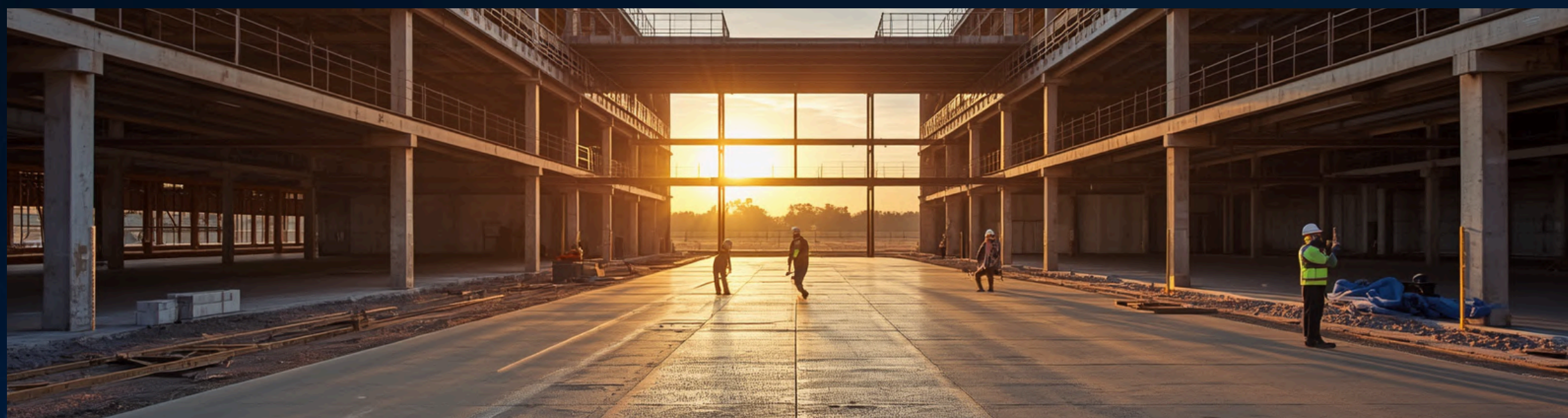


Middle East

Emerging
Opportunity – UAE

GOING FORWARD

**"REINFORCING INDIA'S INFRASTRUCTURE
FUTURE — ONE ENGINEERED SOLUTION
AT A TIME."**



Product Innovation

KMCL's focus on advanced steel fiber solutions, higher tensile strength, and improved anchorage supports its long-term differentiation.

Shift to Engineered Materials

The market is gradually moving from conventional reinforcement approaches to performance-led solutions such as steel fiber reinforced concrete.

Export Potential

The Company continues to evaluate opportunities beyond domestic markets, subject to commercial viability and execution readiness.

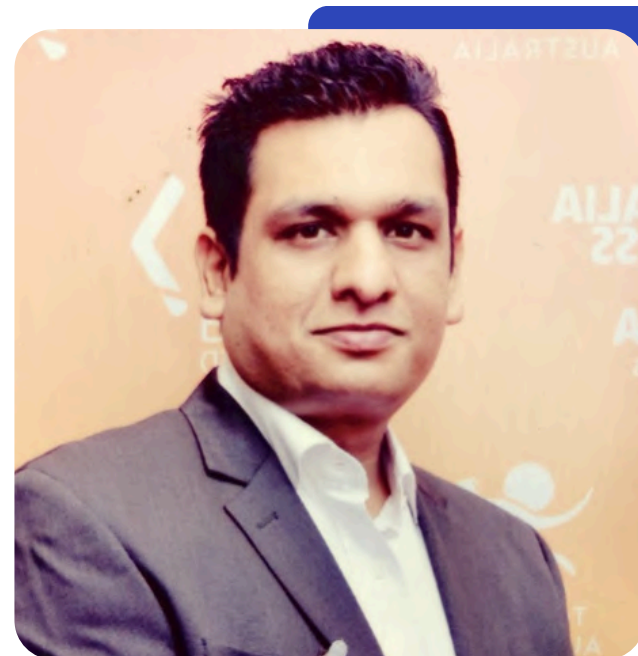
Our Management



Samit Singhai

Chairman & Managing Director

- 22+ years industry experience
- Masters in Industrial Engineering (USA) , B.E. Mech
- Led KMCL from zero to ₹65 Cr+ revenue
- Driving product innovation and global expansion



Akash Singhai

Director - Business Development

- 15 + years of Industry Experience.
- MBA in Marketing from Australia. B.E Production
- Leads sales, exports and customer acquisition
- Driving GCC market expansion
- Managing Partner, Durafloor Concrete Solutions LLP



Our Clients



OUR PRESTIGIOUS CLIENTS |



E-commerce and Industrial Flooring

and many more...

| | |
|-----------------------------------|---|
| Company Name | Kasturi Metal Composite Limited |
| Sector | Steel Fiber / Industrial Reinforcement / Construction Materials / Automotive Friction Materials |
| Listed On | BSE SME |
| Date of Listing / IPO | Listing: 03 Feb 2026 |
| Symbol / Scrip Code | KASTURI / BSE SME: 544688 |
| Face Value | ₹ 10 per share |
| IPO Price | ₹ 64 per share |
| Listing Price | ₹ 64 per share on listing day |
| Current Price (3 Jun 2026) | ₹ 51 per share |
| Market Cap (3 Jun 2026) | ≈ ₹ 53 Cr |
| 52-Week High | ₹ 73.8 per share |
| 52-Week Low | ₹ 44.2 per share |
| PE Ratio (TTM) | ~13.6x |

Thank You

Production Plants

Plant 1 - D-13/1,MIDC , Amravati

Plant 2 - A-30/3,MIDC , Amravati

Plant 3 - A-98 MIDC , Amravati

Plant 4 - B-2/4 Nandgaon MIDC

MIDC , Amravati



+91-98909 72656

Chennai Office

Old No 61 , New No 58, Kamdar
Nagar, Second Street,
Nungambakkam,
Chennai - 600 034, India



www.steelfiberindia.in

Mumbai Office

Akshar Business Park , S Wing, First
Floor, Off No 1063A ,
Janta Market Road, Sect 25, Vashi,
Navi Mumbai 400703, Maharashtra,
India. Telefax : +91 22 27844404



samit@steelfiberindia.in