



July 3, 2026

To Sr. General Manager Department of Corporate Services BSE Limited Phiroze Jeejeebhoy Towers Dalal Street Mumbai - 400001  Scrip Code: 544317	To Sr. General Manager Listing Department National Stock Exchange of India Limited Exchange Plaza, C-1, Block G Bandra Kurla Complex Bandra (E), Mumbai - 400 051  Scrip Symbol: TRANSRAILL
--	---

**Sub: Presentation for Group Meetings with Buy Side and Sell Side scheduled on Friday, July 3, 2026**

**Ref: Regulation 30 read with Schedule III of SEBI LODR**

Dear Sir / Madam,

Pursuant to provisions of Regulation 30 read with Schedule III of the Securities and Exchange Board of India (Listing Obligations and Disclosure Requirements) Regulations, 2015, as amended from time to time, please find enclosed herewith the presentation for Group Meetings with Buy Side and Sell Side, scheduled on Friday, July 3, 2026 at 03:30 P.M. (IST).

You are requested to take the above mentioned on your records.

**For Transrail Lighting Limited**

**Monica Gandhi**  
**Company Secretary and Compliance Officer**

**Encl:** As above

**TRANSRAIL LIGHTING LIMITED**

**Corporate & Registered Office:**

501 A, B, C, E, Fortune 2000, Block-G, Bandra Kurla Complex, Bandra East, Mumbai - 400051, Maharashtra, India  
Tel: +91 22 61979600 | Web: www.transrail.in | CIN: L31506MH2008PLC179012



## Investor Presentation

*Building scale*  
*Creating Value*  
*Expanding globally*

---



*This presentation is issued by Transrail Lighting Limited (the “Company”) for general information purposes only and does not take into account any specific objectives, financial situations or needs of any particular person. It does not constitute, and should not be construed as, an offer, invitation, or solicitation of any kind to sell or issue, or any invitation to subscribe for, purchase or deal in any securities of the Company in any jurisdiction. Nor shall it or any part of it, or the fact of its distribution, form the basis of or be relied upon in connection with any contract or investment decision.*

*This presentation may include statements which may constitute forward-looking statements. All statements that address expectations or projections about the future, including, but not limited to, strategy, business development, market position, expenditures and financial results, are forward-looking in nature. These are based on certain assumptions and expectations of future events and are not guarantees of future performance. Actual results may differ materially. The Company does not undertake to update any forward-looking statements that may be made from time to time.*

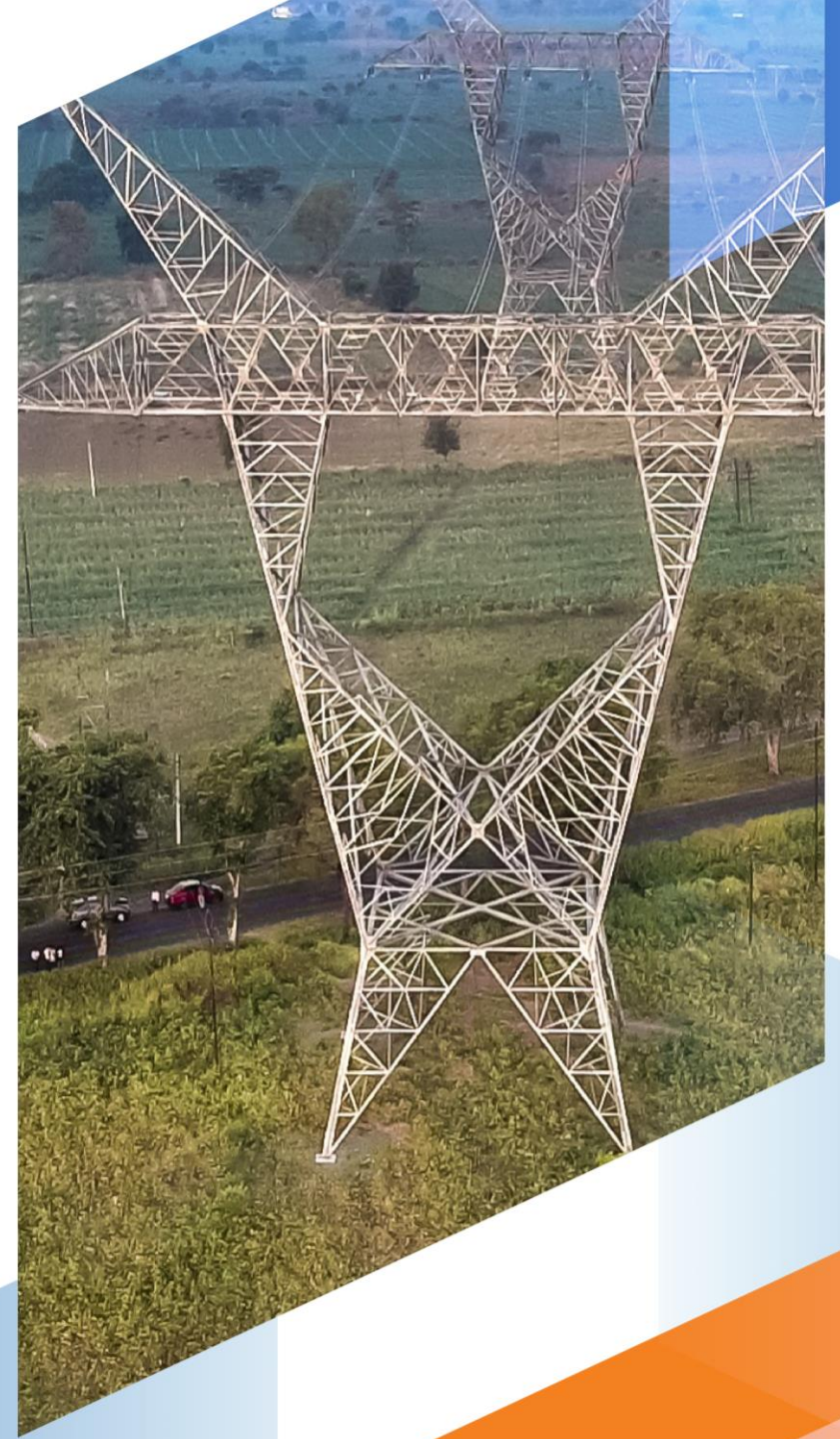
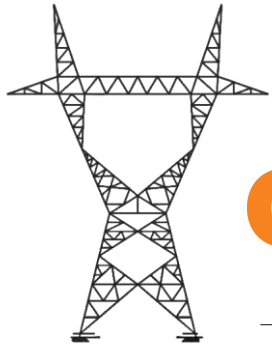
*This presentation and its contents are confidential and may not be copied, disseminated or distributed, in whole or in part, directly or indirectly, in any jurisdiction where such distribution is unlawful.*

**TRANSRAIL**

DieW/ab

# Corporate Overview

---



## Diversified Business Portfolio



T&D



Substation



Civil Construction



Railways



Poles & Lighting



Solar EPC

**4 Decades +**  
of Expertise

Constructed  
**36,900+**  
CKM Transmission Lines

**2,700 +**  
Employees

Footprint across  
**63**  
Countries

Supplied  
**226,000+**  
KM of Conductors

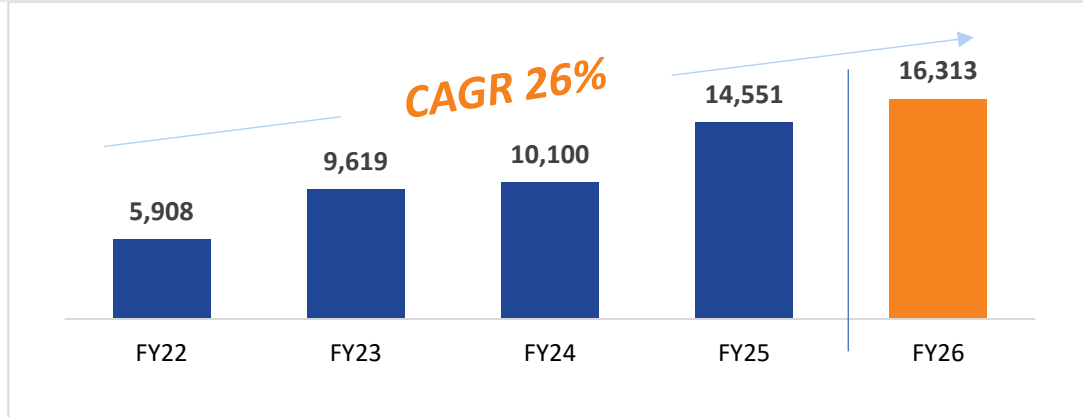
**INR 16,361 Cr**  
Unexecuted Order book & L1  
as on 01.04.2026

Supplied  
**1.50 Mn**  
MT of Towers

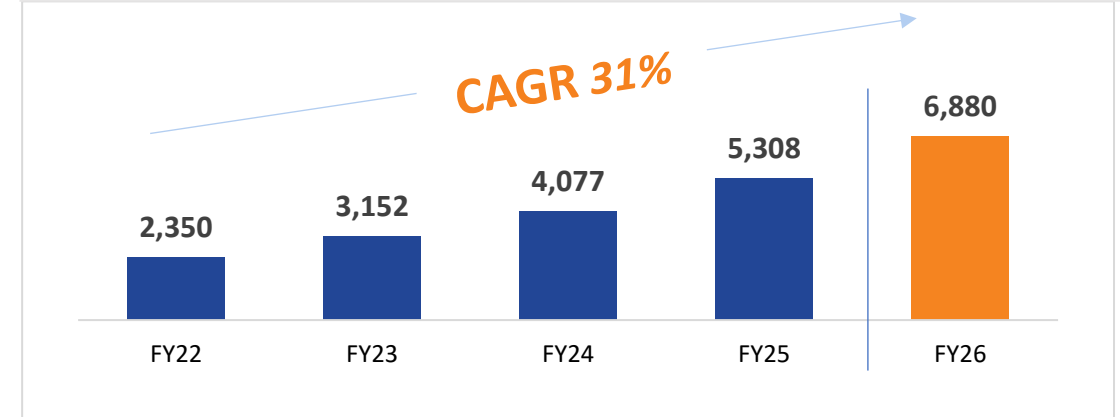
**19,500+**  
Man Months of  
Design & Engineering experience

**5**  
Integrated Manufacturing Facilities

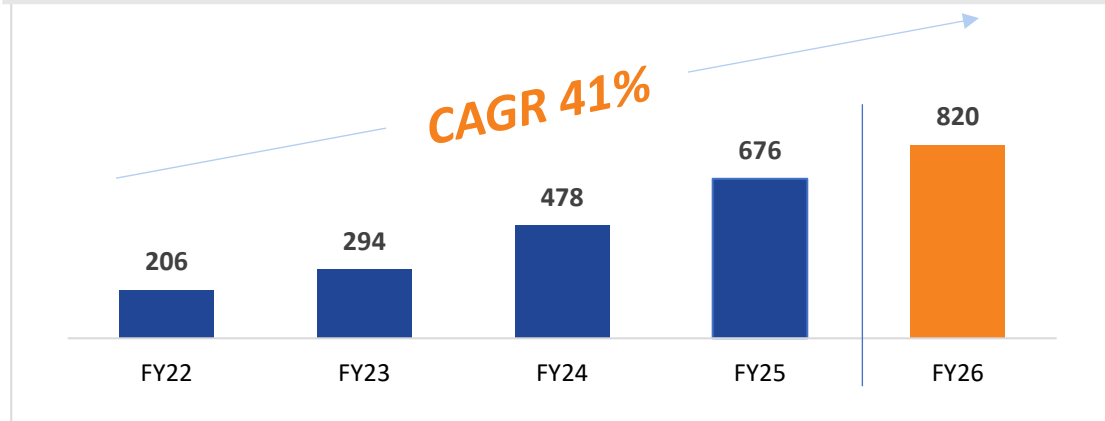
### Closing Order Book (₹ Cr.)



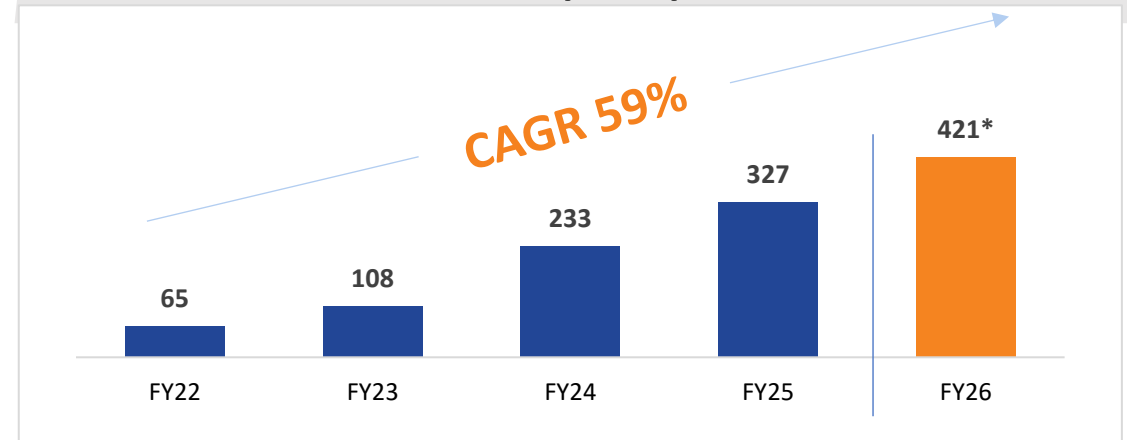
### Revenue (₹ Cr.)



### EBITDA (₹ Cr.)



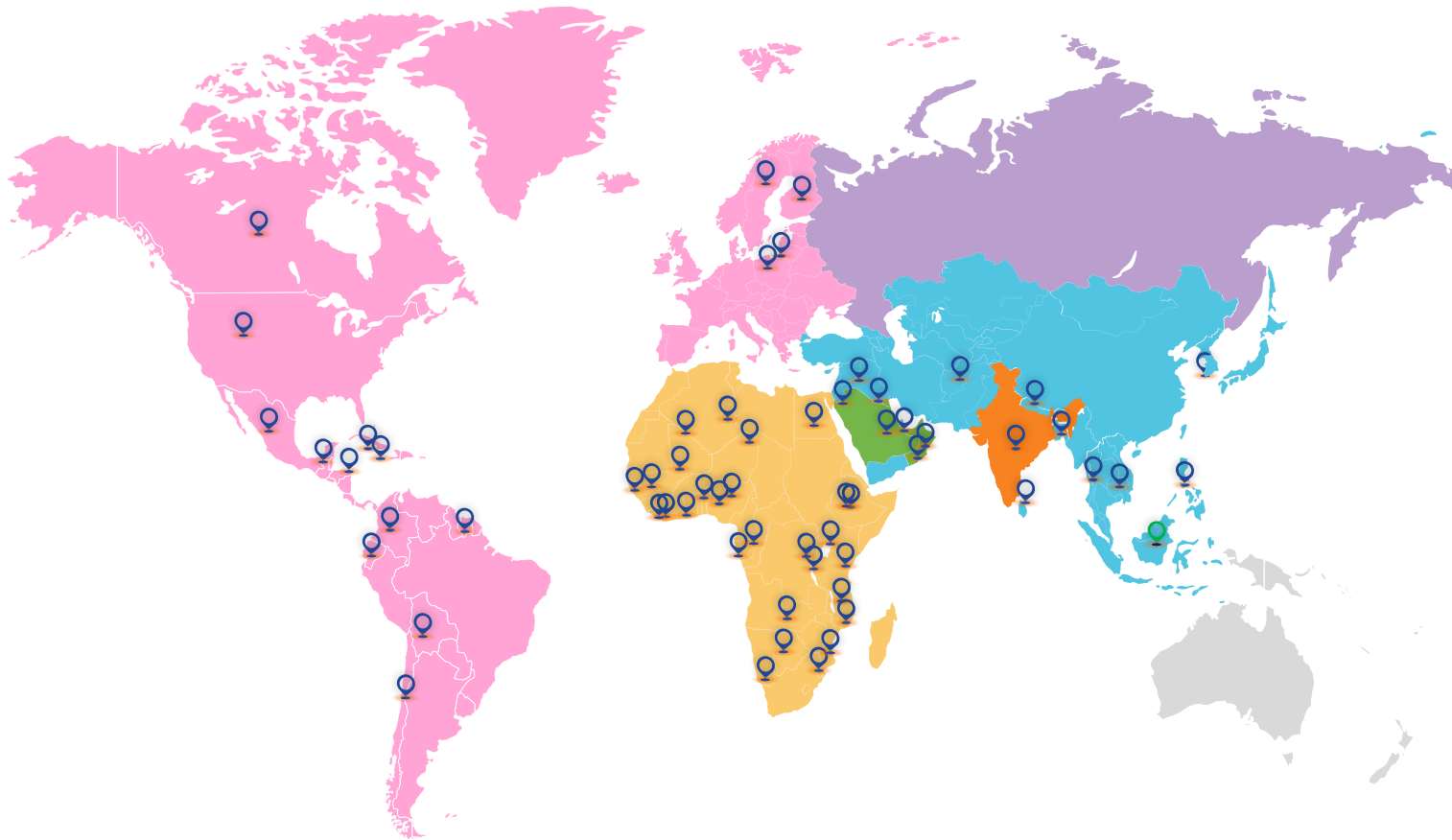
### PAT (₹ Cr.)



**SUSTAINED GROWTH OVER LAST 5 YEARS**

\* PAT excludes provision made of ₹ 17 Cr in Q3 FY26 towards new labour code

# Global Reach & Operations



Footprint across  
63 Countries

Active Projects  
in India: 50+

Active  
Countries: 20+  
30+ projects

New Countries  
added FY26: 4

## India

- Ongoing Projects: 50+
- Over 300 projects completed, working with all leading developers in India.
- Turnkey EPC of Transmission lines of 765 kV, 800 kV HVDC constructed.
- AIS & GIS Substations constructed on turnkey basis.
- Rural electrification and underground cabling jobs completed.
- Factories for towers, conductors, and monopoles.
- Diversified presence across Railways, Civil, and Poles & Lighting business.

## Africa

- Footprint in over 28 African countries across all regions of Africa.
- Executing large EPC projects in transmission lines, substations and rural electrification.
- Projects funded by global agencies such as World Bank, AfDB, EBID, KfW, and BOAD
- Major cross-country transmission lines constructed.

## Rest of Asia

- Strong presence across SAARC, Southeast Asia
- Executed multiple EPC & supply orders across the region.

## GCC

- Supply of towers and poles
- Turnkey EPC of Transmission Lines

## Americas & Europe

- Supply of towers and conductors
- Solar EPC projects being executed.

# Board of Directors



**Digambar Bagde**  
Executive Chairman



**Sanjay Kumar Verma**  
Non-Executive Vice Chairman



**Randeep Narang**  
Managing Director & CEO



**Raman Rajagopalan**  
Deputy Managing Director



**D Suryanarayana**  
Whole-time Director



**Shrikant Chaturvedi**  
Non-Executive Director



**I. S. Jha**  
Non-Executive Director



**Vinod Dasari**  
Independent Director



**Ranjit Jatar**  
Independent Director



**Ashish Gupta**  
Independent Director



**Ravita Punwani**  
Independent Director



**Maj Gen Dr. Dilawar Singh (Retd.)**  
Independent Director



**Dr. D S Gangwar IAS (Retd.)**  
Independent Director



**Rajeev Jain**  
Independent Director



## DIGAMBAR BAGDE

*Executive Chairman*

He is the Promoter of our Company and a stalwart of the Power T&D industry, with five decades of rich and diverse experience. He holds a Bachelor of Science degree in Civil Engineering from the Maharaja Sayajirao University of Baroda. After his initial decade of working for a reputed T&D Company, he started Transrail in 1984 and has been at the helm of affairs, steering a journey of 4 decades saw various landmarks. He is leading the board and management team in strategizing the pathway to growth.



## RANDEEP NARANG

*Managing Director & CEO*

With over 35 years of experience in diversified sectors, he has strong domain expertise in Power T&D including operations in international markets. Mr Narang holds a Bachelor's degree in Commerce from the University of Delhi and a Postgraduate Diploma in Marketing from the Institute of Marketing Management, New Delhi. He has worked with Bharti Airtel Limited in his capacity as the Chief Operating Officer (West). He was also associated with CEAT Kelani Holdings, Sri Lanka as MD and CEO. His last assignment was with KEC International Limited as President-International ( T&D, Solar ) & Cables.



## RAMAN RAJAGOPALAN

*Deputy Managing  
Director*



## D SURYANARAYANA

*Whole-time  
Director*



## RAJESH NEELAKANTAN

*Chief Strategy  
Officer  
& Group CFO*



## DEEPAK KHANDEWAL

*Chief Financial Officer*



## Chandrakant Majaonkar

*President –  
Design &  
Engineering*



## Anant Kadiwal

*Head- Civil Business*



## Ashok Rawat

*Head –  
Pole & Lighting  
Business*



## Sonal Raj

*CHRO*



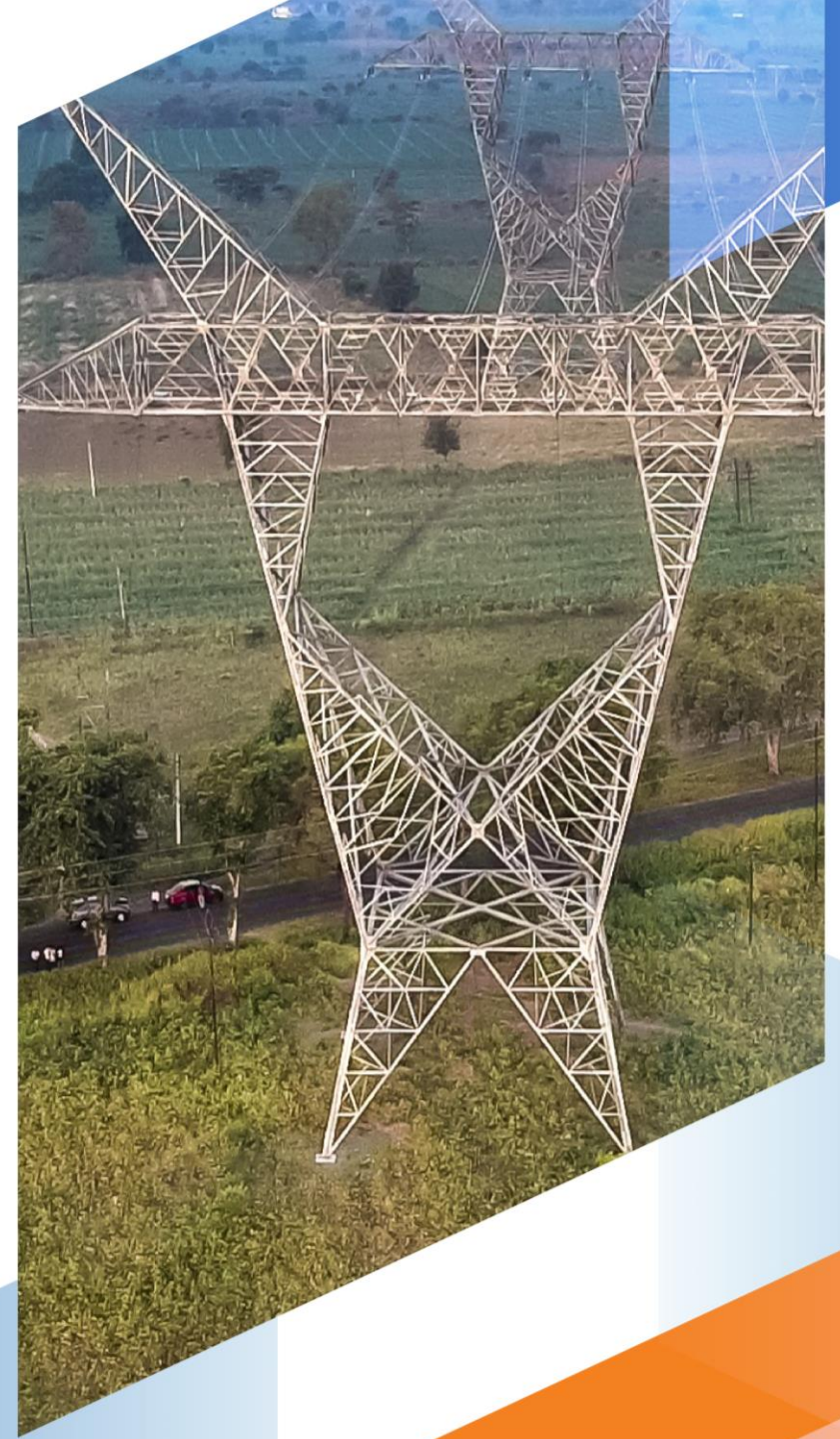
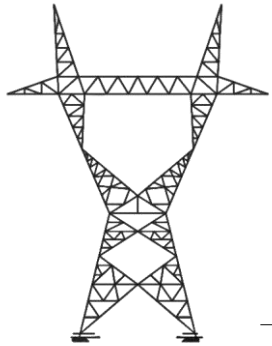
## Monica Gandhi

*Company  
Secretary*

**TRANSRAIL**

DieW/ab

# Business Overview



# Legacy of 4 Decades

**1984**

Transrail Engineering Company (TEC) started with first foundation work on 132kV line



**1987**

First Direct 400 kV transmission Line job received

**1993**

Factory for Tower manufacturing in Baroda



**2007**

Factory of conductor manufacturing established in Silvassa.

**2008**

First International Turnkey project

**2012**

First 800 KV HVDC line (Champa - Kurukshetra)

**2010**

Factory for Pole Manufacturing at Silvassa



**2010**

Tower Testing Unit started Deoli



**2009**

Factory for manufacturing of tower at Deoli, Wardha.



**2017**

First 220kV & 400kV Turnkey Substation Project orders received. Rly electrification Turnkey job received

**2018**

Established Civil division of Transrail

**2022**

Completed First Underground Cabling Project of the Company



**2024**

Listed on Stock Exchanges  
Special Appreciation Awards for 765kV TL projects from PGCIL



**2025**

Foray into Solar EPC  
Deoli Plant awarded 'A Grade' by PGCIL

**2026**

Tower & Conductor Manufacturing Capacity being doubled



## Power Transmission & Distribution



### Capabilities

- **Manufacturing**
  - Towers, Conductors & Monopoles
- **EPC work**
  - Transmission line upto 1200 kV
  - AIS and GIS substations upto 765 kV
  - Under ground Cabling
  - Rural electrification
  - HVDC lines 800 kV
  - High performance HTLS conductors



## Civil Construction



### Capabilities

- Bridges
- Tunnels
- Elevated roads
- Cooling towers



## Railways

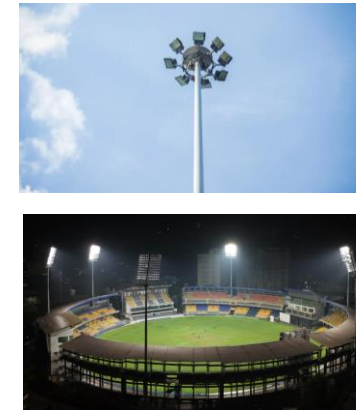


### Capabilities

- Overhead electrification
- Traction Substation
- Signaling and telecommunication services
- Track laying
- Other composite works



## Poles & Lighting



### Capabilities

- High masts / Flag masts
- Street poles
- Luminaries
- Stadium lighting
- Derrick structures
- Railway Portals
- Road gantries and signages
- Solar streetlights
- Decorative poles



## Solar EPC (International)



### Capabilities

- Institutional solar
- Commercial and industrial solar
- Solar parks
- Utility scale projects
- Mini grids

# Manufacturing Units: Transmission Towers

*“Integrated manufacturing ecosystem with end to end capabilities from steel processing to global project delivery”*



Deoli Plant

## 1 Raw Material Procurement



- ✓ Certified Structural Steel Procurement
- ✓ Material Inspection & Traceability
- ✓ Inventory Management

## 2 Fabrication



- ✓ CNC Punching
- ✓ Cutting
- ✓ Drilling & Bending
- ✓ Member Identification

## 3 Galvanizing



- ✓ Surface Preparation
- ✓ Galvanizing
- ✓ Cooling & Finishing
- ✓ Corrosion Protection

## 4 Finished Goods



- ✓ Bundling
- ✓ Packing & Loading
- ✓ Dispatch to EPC Projects / Customers



## Our Strengths



State of the art manufacturing plants with CNC Technology imported from Italy



Enclosed galvanizing plant ensuring superior corrosion protection



In house NABL accredited testing facility



End to end capability from sourcing to dispatch



Consistent quality, timely delivery & customer centric approach



Strong track record in domestic & international markets



**Direct Supply to Americas, GCC, Philippines**



**ISO 9001 / 14001 / 45001  
CE Certified & NABL Accredited (Deoli Plant)**

## Our Plant

Deoli, Wardha, Maharashtra  
Butibori, Nagpur, Maharashtra  
Vadodara, Gujrat

## Capacity

84,000 TPA → 172,400 TPA  
Target: 196,000 TPA

## Product Range

- Single, Double & Multi-Circuit Galvanised Transmission Towers


# Manufacturing Units: Monopoles & Poles



## Our Strengths


-  Advanced CNC pole manufacturing with high precision & accuracy
-  Automatic plate cutting, forming & welding for superior strength
-  Long length galvanising facility ensuring superior corrosion protection
-  End to end fabrication and inhouse quality insurance
-  Trunkey solutions including supply installation & commissioning (SITC)
-  Serving utilities, EPC companies & infrastructure developers across world

**1 Raw Material Procurement**




- ✓ Certified Steel Plate Procurement
- ✓ Material Inspection & Traceability
- ✓ Inventory Management

**2 Fabrication**



- ✓ CNC Cutting
- ✓ Forming & Welding
- ✓ Pole Fabrication
- ✓ Dimensional Accuracy

**3 ARC Welding**




- ✓ Precision Arc Welding
- ✓ High-Strength Weld Joints
- ✓ Automated Welding Systems

**4 Galvanizing**



- ✓ Surface Preparation
- ✓ Hot-Dip Galvanizing
- ✓ Cooling & Finishing
- ✓ Corrosion Protection

**5 Finished Goods**



- ✓ Safe Packing
- ✓ Loading & Logistics
- ✓ Dispatch to Project Sites
- ✓ Installation Support

## Our Plant

Silvasa, Khardi,  
Dadra Nagar Haveli

## Capacity

25,000 MT Annum

## Product Range

- T&D Monopoles
- High Masts & Street Light Poles
- Traffic Poles & Solar Street lights
- Railway masts etc

**14.2 M Galvanising Bath**



**ISO 9001 / 14001 / 45001  
CE Certified &  
NABL Accredited**



# Manufacturing Units: Conductors



## Our Strengths



State of the art manufacturing facility with modern high speed machinery



Approved by Powergrid and leading national & international utilities



High performance conductors including HTLS (Carbon core) and specialty types



End to end capability from sourcing to dispatch



Consistent quality, timely delivery & customer centric approach



Strong track record in domestic & international markets



**ISO 9001 / 14001 / 45001**  
**NABL Accredited**

### 1 Raw Material Procurement



- ✓ Aluminum ingots Procurement

### 2 Wire Rod Manufacturing



- ✓ Wire Rod facility

### 3 Conductor Manufacturing



- ✓ Wire Stranding
- ✓ Conventional & HTLS Conductors

### 4 Quality Assurance



- ✓ Dimensional Inspection
- ✓ Quality Testing

### 5 Finished Good



- ✓ Protective Packing
- ✓ Loading & Logistics

## Our Plant

**Silvasa, Amboli**

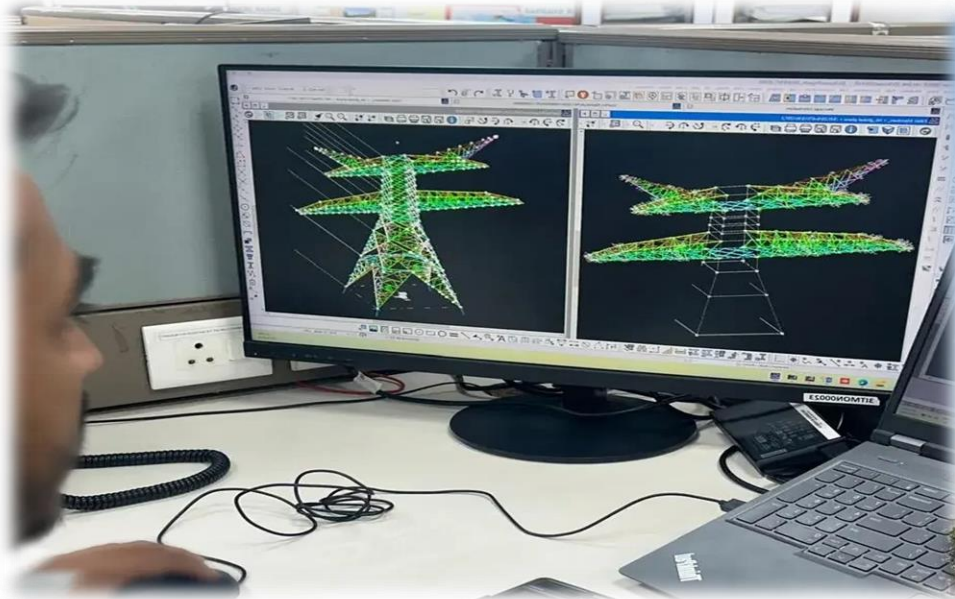
## Capacity

Installed Capacity:  
**24,500 Km**  
Target: **49,500 Km**

## Product Range

- **Conventional: AAAC, ACAR, AAC, ACSR etc**
- **HPC / HTLS: HVCRC (Carbon core), Gap, AL59 etc**
- **Upto 800kV**

## Design & Engineering



## Testing Facility



### Highlights

- ✓ Advanced design software: PLS-CADD, PLS-POLE, PLS-TOWER, AutoCAD & i-Tower
- ✓ Specialized experience of 19,500 man months.

### Facility Highlights

- ✓ NABL Accredited
- ✓ Test Two towers simultaneously
- ✓ 500 + towers tested successfully



Deoli,  
Wardha,  
Maharashtra



Max. Base Width  
30 M



Max. Tower Height  
90 M



Tower Crane Height  
92 M

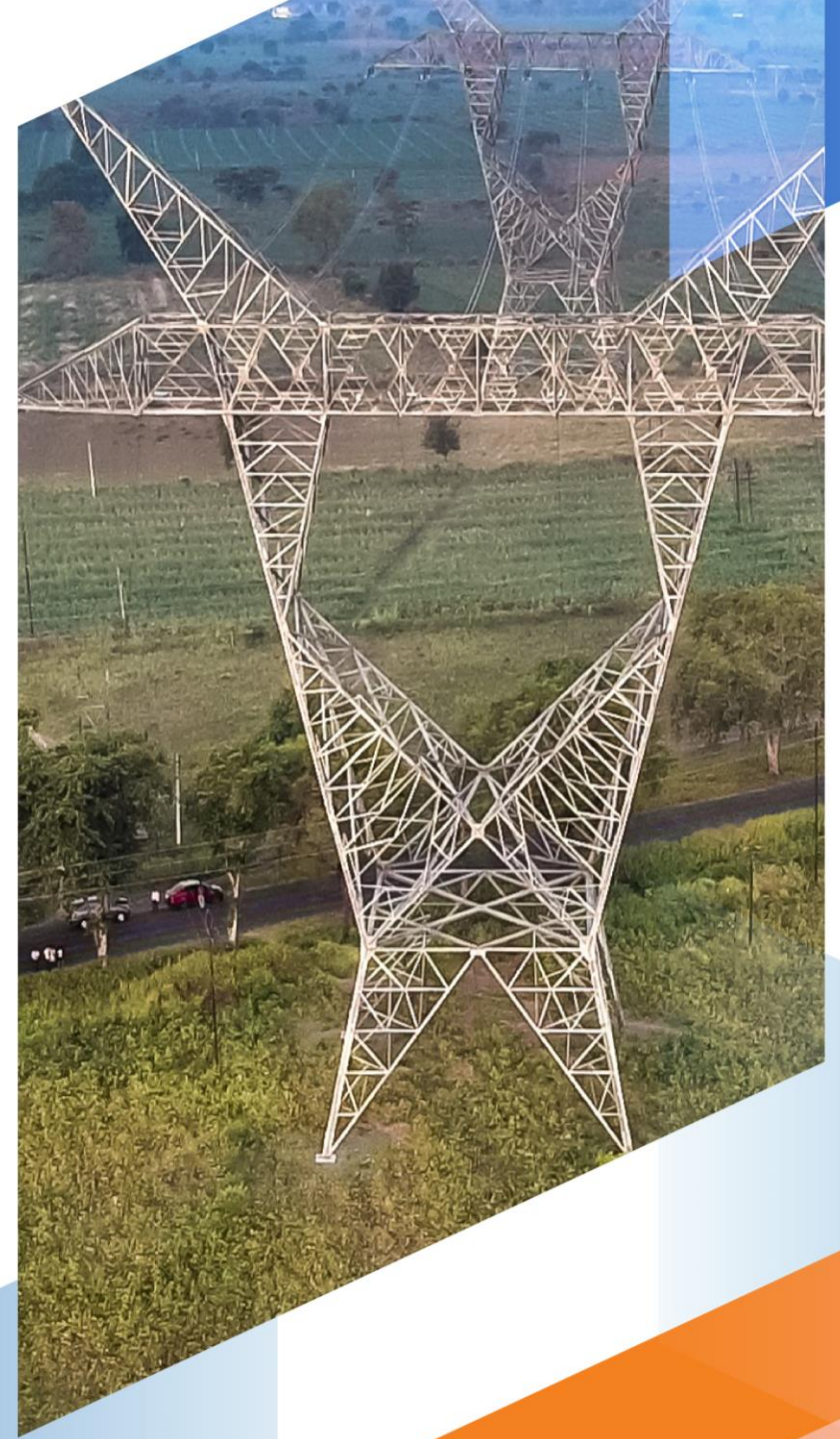


TRANSRAIL



**Operational &  
Financial Highlights**

---





**₹ 6,880 Cr**  
HIGHEST EVER REVENUE  
3X Growth over 5 Years



**₹ 16,361 Cr+**  
ORDER BOOK INCLUDING L1



**1,900 CKM**



**150,000 MTPA**  
TOWER SUPPLIED

**1**

## Financial Momentum



- Revenue of ₹ 6,880 Cr, 30% YoY Growth (against Guidance of 25%)
- EBITDA grew by 21%
- PAT grew by 28%
- Strong cash flow management
- Continued Improvement in Credit Rating

**3**

## Order Book & Inflows



- Order Inflow of ₹ 8,520 Cr
- Order book including L1 at ₹ 16,361 Cr
- Balanced international + domestic mix
- Entry into new geographies

**5**

## Manufacturing Enhancement



- Doubled our tower manufacturing capacity to 172,400 MTPA
- Started new Tower factory at Butibori, Nagpur
- Conductor plant brownfield expansion on schedule

**2**

## Execution Milestone



- 1,900 CKM transmission lines executed
- Phase 1 of Bangladesh River crossing TL completed
- 150,000 MT of towers supplied
- 31,000 Km of conductors supplied
- >20 Large scale projects completed across the global during the year including 7 - 765kV projects in India

**4**

## Strategic Expansion



- Increased focus across GCC/Africa/SAARC
- HTLS conductor supply being focused
- Bagged 3 new Civil projects
- Bagged 3 new Railway projects

**6**

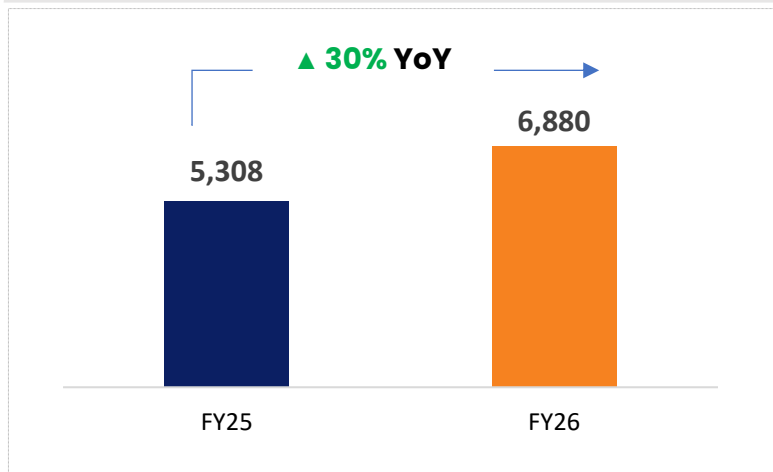
## Awards & Recognition



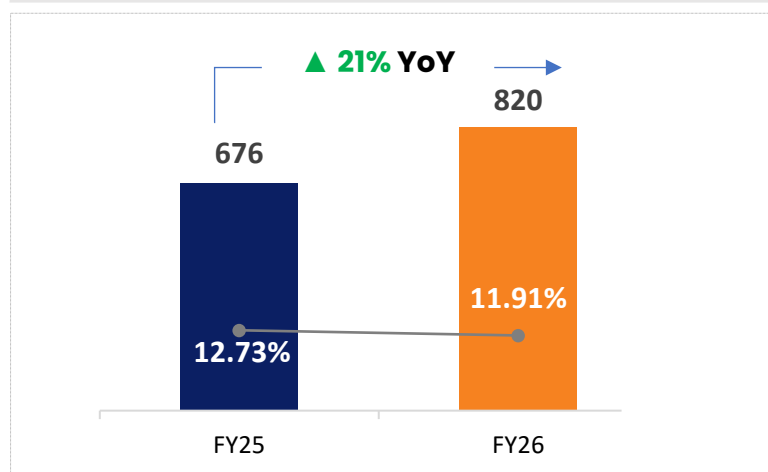
- Most Admired Emerging Company in the Power Sector: ET Now Infra Focus
- Fortune India 500 large companies of 2025
- Best Health & Safety Program 2025: World HRD congress

# FY26 MARKS A YEAR OF RECORD-BREAKING PERFORMANCE

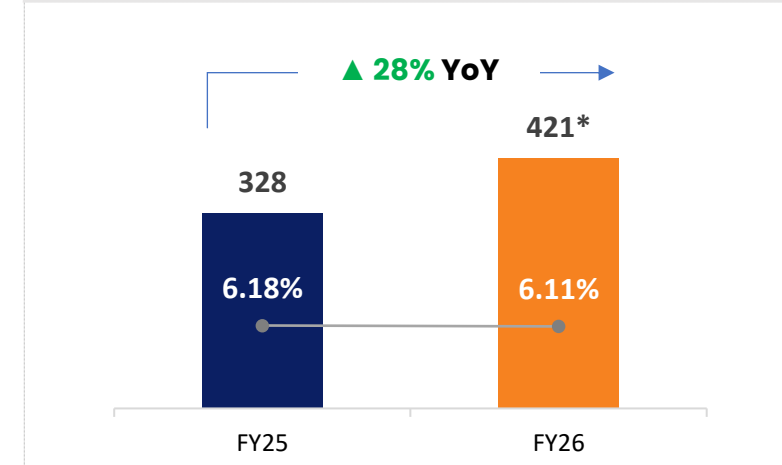
## REVENUE from Operations (₹ cr.)



## EBITDA (₹ cr.) and EBITDA Margins (%)



## PAT (₹ cr.) and PAT Margins (%)



- ✓ Achieved **Highest Ever** Revenue, EBITDA, PAT
- ✓ Exceeded **FY26 Revenue growth guidance** across the year (25% in Q1, revised to 26%/27% in Q3), delivering **30% YoY growth** for the full year

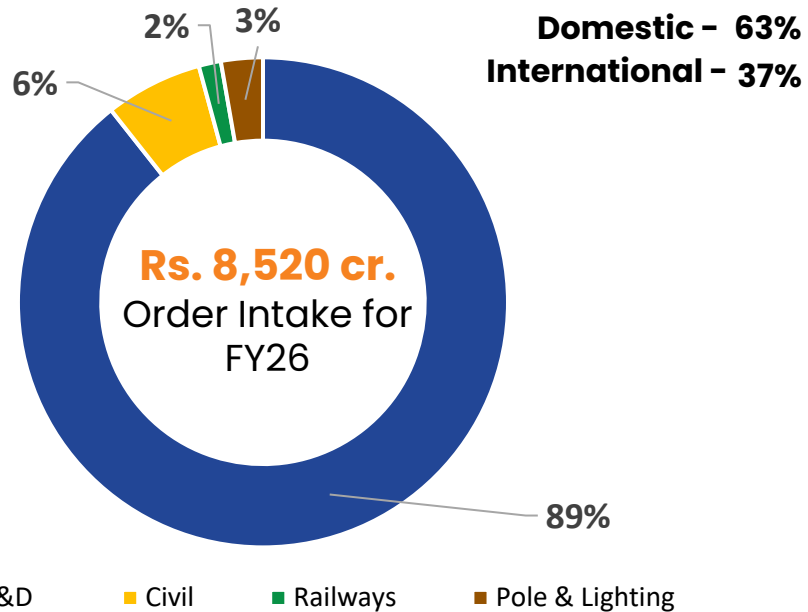
- ✓ **Order Book Strengthened to ₹ 16,361 Cr+ including L1**
- ✓ **Entry into New Geographies** while maintaining strong momentum in **Domestic market**
- ✓ **Dividend of 100%**, that is ₹ 2 per equity share for the financial year ended 31st March 2026.

Executing Today. Expanding Tomorrow. Creating Long-Term Value

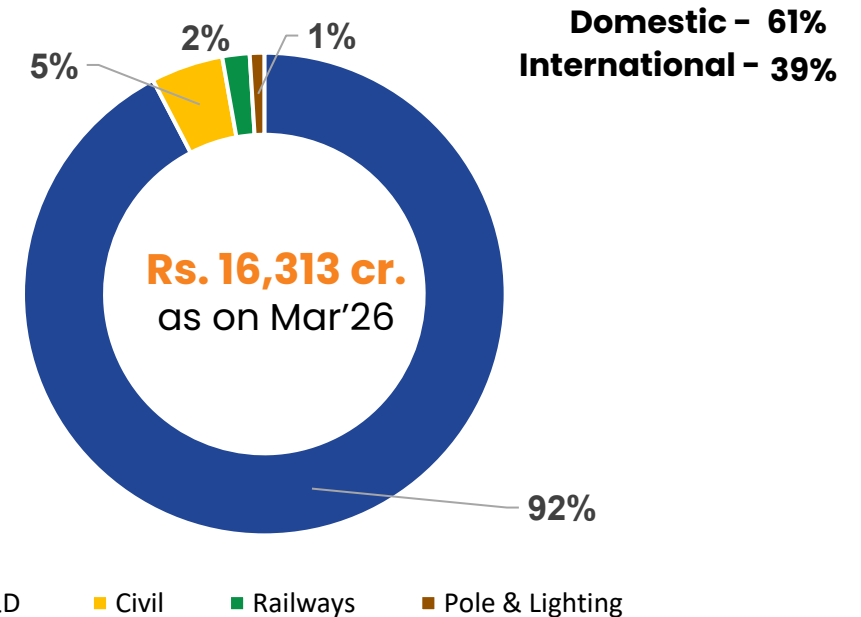
\* PAT excludes provision made of ₹ 17 Cr in Q3 FY26 towards new labour code

# FY26 Order Inflow and Un-executed Orderbook

## Order Inflow



## Un-executed Order Book



**Total Un-executed Orderbook of Rs. 16,361 cr. as on 31st March 2026 (including L1 of Rs. 48cr.)**

- ✓ Order Inflow remained stable across core businesses
- ✓ Power T&D continues to be the primary growth driver
- ✓ Balanced domestic and international mix reduces concentration risk
- ✓ Focus on margin led qualitative order book

**Healthy order pipeline and a robust order book positions Transrail for sustained growth in FY27 and beyond**

## Operational Highlights

- ✓ Brownfield and greenfield **expansion of tower manufacturing** has been successfully completed
- ✓ **SAP RISE** upgradation from SAP HANA rolled out across operations
- ✓ **Geographic expansion** with entry into new international markets:
  1. Abu Dhabi
  2. Tunisia
  3. Djibouti
  4. Botswana
- ✓ Supplied **150,000 MT** of Transmission Tower
- ✓ Supplied **31,000 KM** of Conductor including HTLS conductors

### Khetri–Narela transmission line

- ✓ Commissioned 765 kV double-circuit Khetri–Narela transmission line, a critical inter-state corridor evacuating 8.1 GW of renewable energy from Rajasthan to Delhi-NCR, strengthening India's green energy backbone
- ✓ Improves grid reliability and bulk power transfer, enabling renewable integration across Delhi, NCR, Rajasthan, and adjoining regions
- ✓ Delivered under challenging conditions, reinforcing our commitment to nation-building; execution appreciated by PGCIL



## Domestic Projects Commissioned

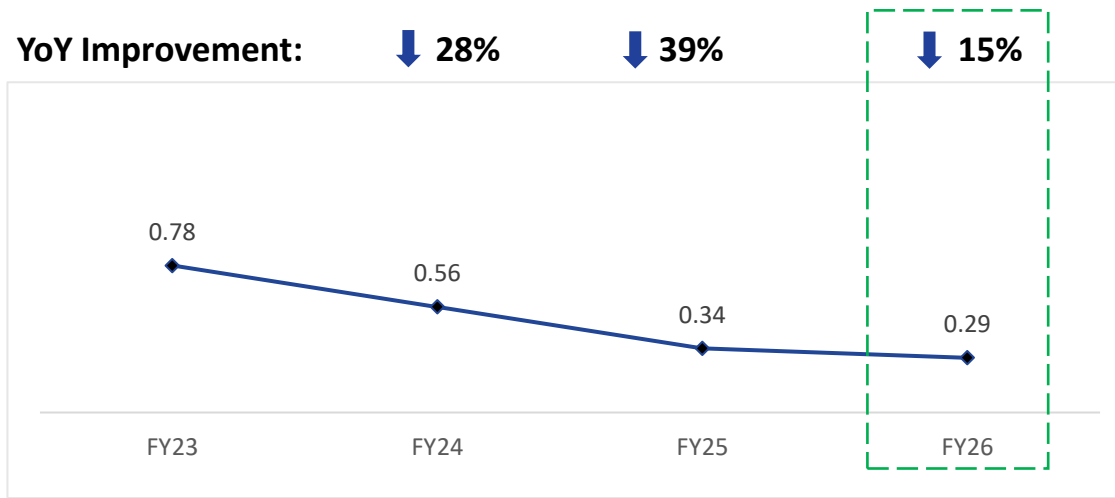
- ✓ **765 kV D/C TL** project in Khetri Narela for Powergrid, Package 2 and 3
- ✓ **765kV D/C Transmission Line** Ahmedabad – Lakadia for Powergrid
- ✓ **765 KV DC** Banaskantha-Ahmedabad for Powergrid
- ✓ **765 kV DC Transmission line** project in Khetri Narela, Package 1
- ✓ **Cooling towers** at Yadadri (Telangana)
- ✓ **765 kV DC KPS2- LAKADIA**
- ✓ **765 kV DC KPS1- KPS2 (Khavda)**
- ✓ **Three lines of 400kv TL** project in Solapur, Maharashtra
- ✓ **132 kV Hazipur Chappra Monopole** Transmission Line
- ✓ **Cooling Tower Udangudi (Tamil Nadu)**

## International Projects Commissioned

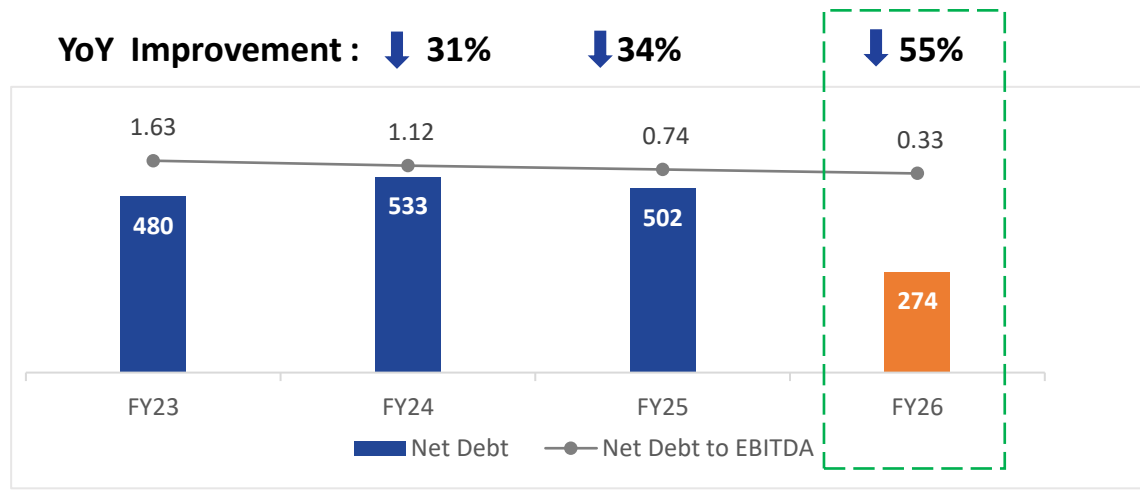
- ✓ **230 Kv DC Line** Rupoor-Dhamrai project in Bangladesh
- ✓ **138 kV Substation & Transmission line** project in Nicaragua (LAC)
- ✓ **132 kV Transmission line** project in Eswatini (Africa)
- ✓ **400 kV Rupoor Gopalgang River Crossing** Transmission line
- ✓ **220kV Kigoma(Rwanda)-Gitega (Burundi) Substation**
- ✓ **Secured Supply orders for Towers and Conductors** in countries like Philippines, Oman and USA

# Strong and Consistent Financial Performance

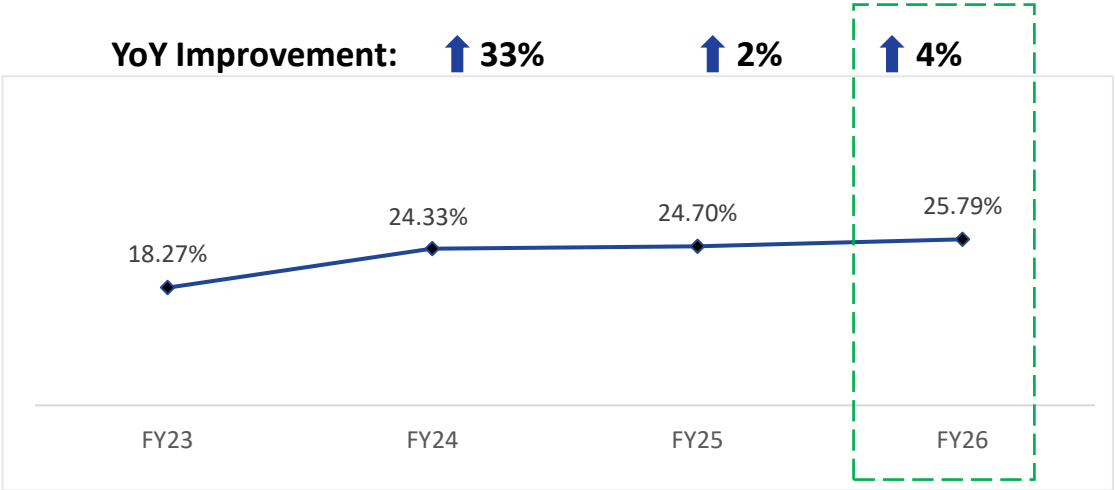
## Debt to Equity (x)



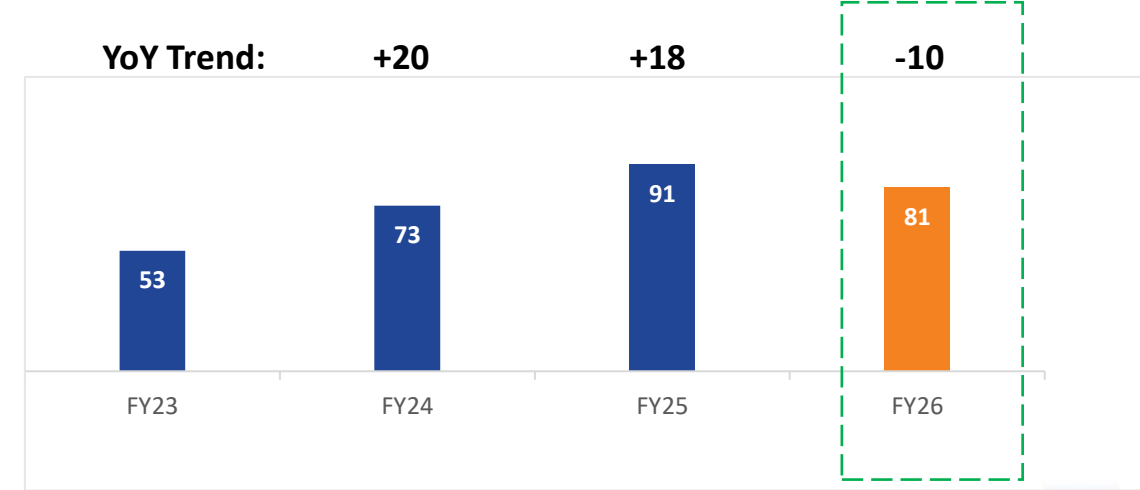
## Net Debt (₹ Cr.) & Net Debt to EBITDA (x)



## Return on Capital Employed (%)



## Working Capital Days (days)



Return on Capital Employed: Earning before interest and tax/ Capital Employed  
 EBITDA: Profit for the year plus tax expenses plus finance cost plus depreciation and amortization expense less other income  
 Net Debt is excluding IPO Funds

# Borrowing, Working Capital & Credit Rating

## Borrowings

	Particulars (in ₹ Cr)	31-03-26	31-03-25	Inc/(Dec)
	LT Borrowings	88.53	38.53	50.00
	ST Borrowings*	570.87	604.93	-34.06
Less:	Cash and cash equivalents	385.24	141.45	243.80
	<b>Net Debt (ex-IPO Funds)</b>	<b>274.16</b>	<b>502.01</b>	<b>-227.85</b>
Less:	IPO Funds	92.79	241.06	-148.27
	<b>Net Debt with IPO Funds</b>	<b>181.37</b>	<b>260.95</b>	<b>-79.58</b>

\*- Including Current maturity of long-term borrowing

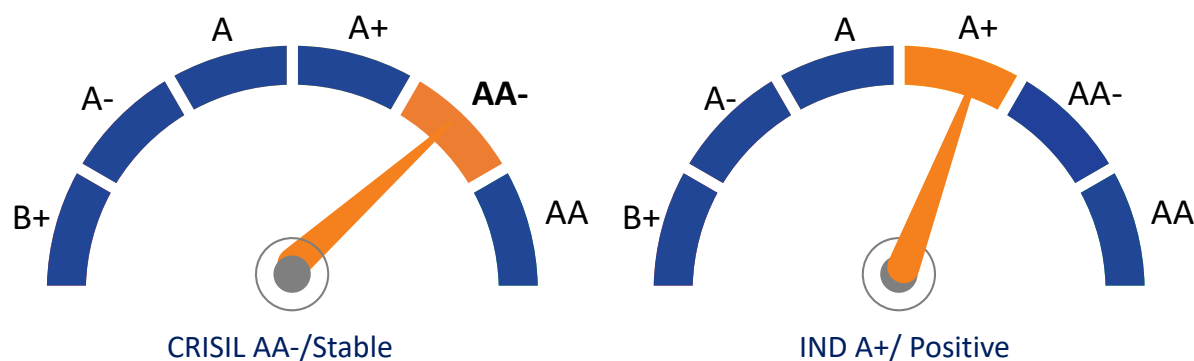
## Cash Flow Analysis

	Particulars (in ₹ Cr)	31-03-26	31-03-25	Inc/(Dec)
	Cash flow from operations	816.89	415.08	<b>401.81</b>

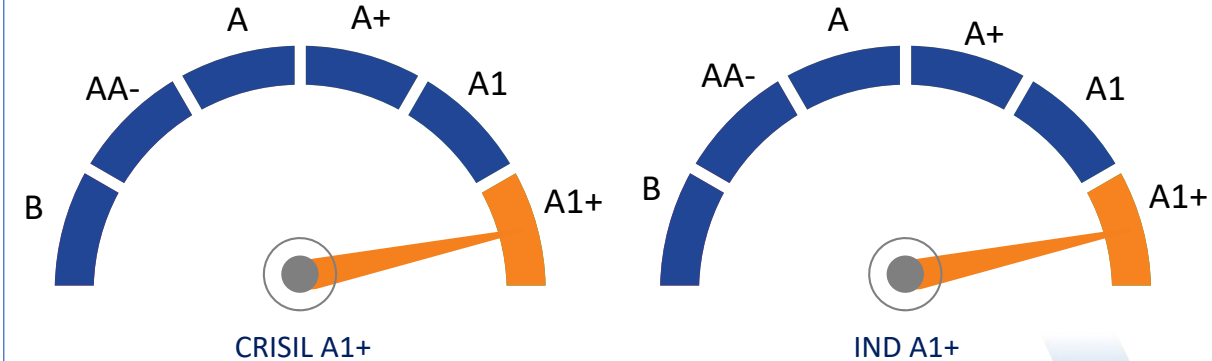
- ✓ **Net Debt reduced by ₹80 Cr YoY (30% reduction)** reflecting strong balance sheet strengthening
- ✓ **Operating Cash Flow more than doubled to ₹ 816.89 Cr in FY26, driven by improved collections and working capital efficiencies**
- ✓ Strong cash generation and disciplined working capital management underpin financial flexibility

## Credit Rating

### Long Term Credit Rating



### Short Term Credit Rating



Rating upgrade by CRISIL on 5<sup>th</sup> Aug 2025 (further reaffirmed on 4<sup>th</sup> Mar 2026)



Successfully **doubled tower manufacturing capacity to 172,400 MTPA in FY26** through greenfield and brownfield expansions across key facilities

## Capacity Planned:

Product	Pre - CAPEX	Post CAPEX (Phase 1 + Phase 2)
Towers	84,000 MT PA	1,96,000 MT PA
Conductor	24,000 KM	49,500 KM

## Timelines:

Product	Phase 1		Phase 2
	Brownfield	Greenfield	Brownfield
Towers	Completed	Completed	By Q2 FY27
Conductor	By Q1 FY27	NA	By Q2 FY27

**1** Brownfield Expansion of existing manufacturing plants (Tower, Conductor and Pole)

**2** New Tower manufacturing Plant commissioned in April 2026 At Butiburi

**3** Construction equipment (T&P) for various domestic and International projects

## New Capex Announcement

**4** Further to above mentioned pre-approved capex, on 26th May 2026 the Board has approved additional Rs. 203 Cr capex mainly for procuring equipment for site construction.

# Glimpse of Completed Projects



400kV D/C Rooppur-Gopalganj Transmission Line, Bangladesh



225/30 kV Substation project at Mali



138kV Substation and Transmission Line Project in Nicaragua



Ahmedabad- Lakadia 765kV Transmission line project



Cooling tower at Udangudi and Yadadiri



765 kV D/C Transmission lines in Khavda, Gujarat

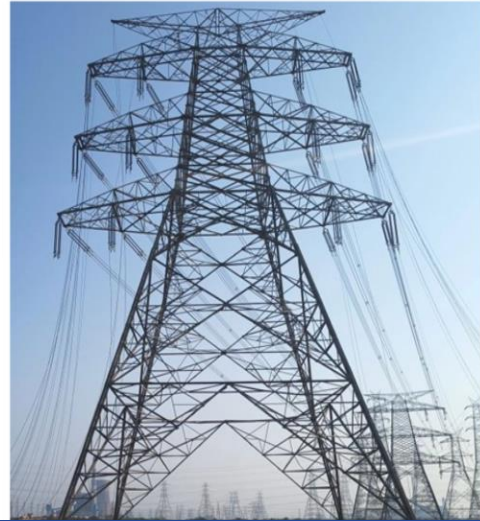


Railway S&T and OHE project for Mau – Azamgarh section

# Glimpse of On-going Projects



**Koppal-II PS – Narendra (New)  
765 kV D/C line**



**TNEB 400 kV DC MC Transmission  
Line Project.**



**400 kV D/C Transmission Line TaZa Project  
(Tanzania)**



**400kV DC Koppal to Gadag Transmission  
Line Project**



**10.2 km long Road Bridge over  
river Kosi (Bihar)**



**Supply of electric masts for bullet  
train project in India**



**400kV Mmamabula Substation project  
(Botswana)**

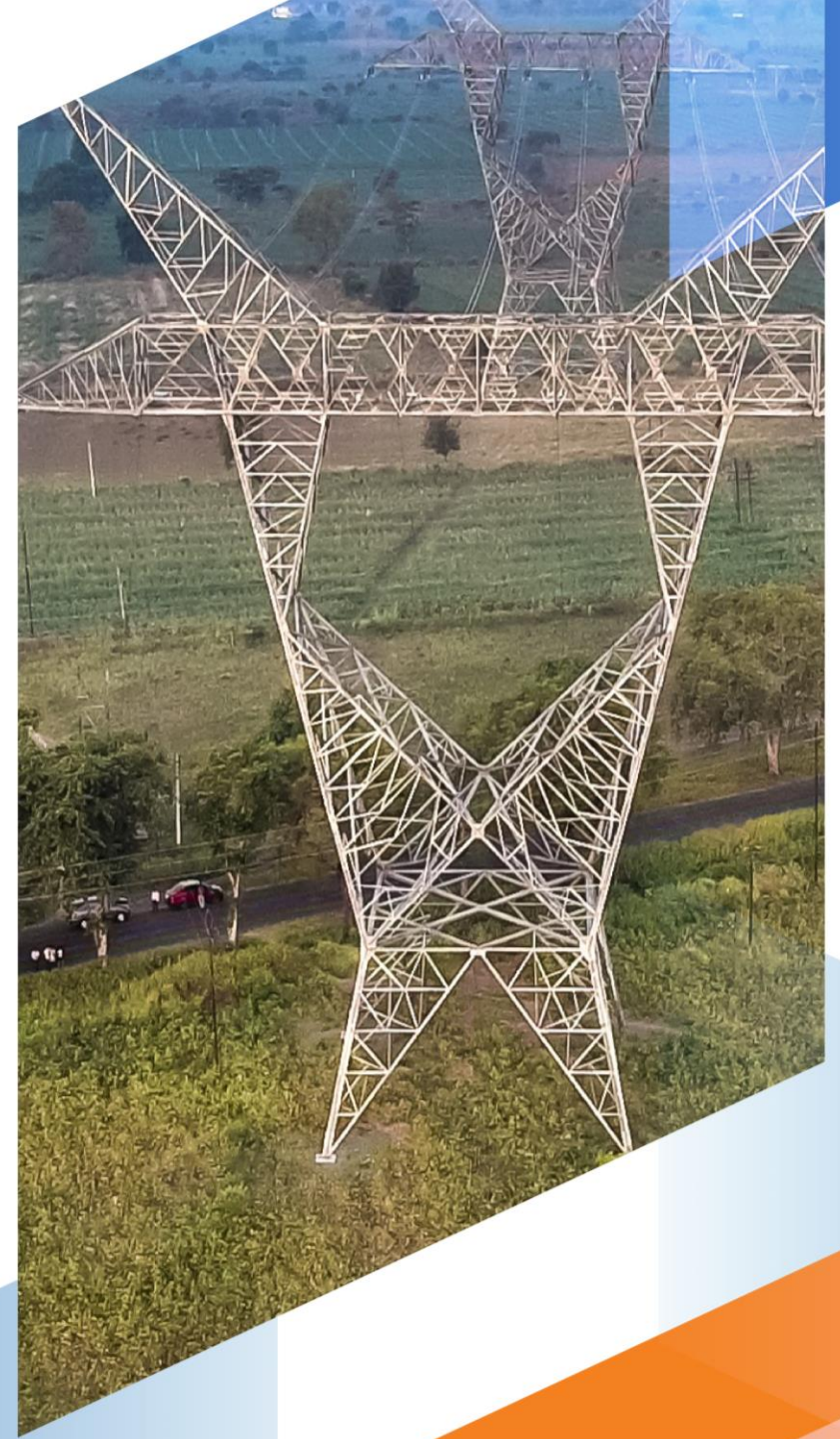
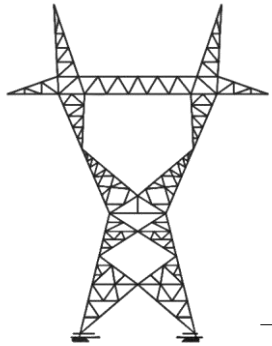


**MCA-Nepal Board of Directors visited 400  
kV Butwal Substation project site**

TRANSRAIL

Divisão

# Industry OUTLOOK



## Industry Enablers & Opportunities

INDIA



### Transmission line addition

National Electricity plan - **191,000 CKM** of Transmission lines addition **by 2032** which is **38%** of India's total grid.



### Energy Transition Push:

**500 GW non-fossil capacity target by 2030** demands massive grid expansion and renewable energy evacuation lines. **Target for 2036 - 900GW Renewable Energy.**



### Manufacturing & Urbanisation:

Industrial corridors, **data centres, EVs**, and green hydrogen driving higher baseload demand. **AI** to further fuel the energy demand



### Government Policy Support:

Government is working for integrating **1150 kV UHV lines** to boost India's grid. **Hydro Evacuation Plan** is a welcome step.



### Private Sector Participation:

**Growing traction in TBCB projects** and PPP-led grid automation initiatives. Larger Private players entered.



### High investment potential:

**₹9.15 lakh crore transmission investments planned by 2032** under the **National Electricity Plan**, providing strong long-term project visibility

### Energy Transition Accelerating Grid Investments

Renewables, EVs, and storage driving large-scale grid expansion



### Global electricity demand expected to nearly double by 2050

Rising power demand from transport and industry



### Africa's Electrification & Connectivity Drive

Initiative like **Mission 300** to connect 300 million people in Sub-Saharan Africa to electricity by 2030 is gaining momentum with the support of World Bank Group and the African Development Bank (AfDB)



### Policy Push & Green Financing Support

Global climate goals (EU Green Deal) and funding T&D investments



### Smart Grid Technologies and Digitalisation

**Smart grid technologies** and **digitalisation** are being adopted worldwide to reduce transmission losses, improve demand management, and enhance grid reliability.



### Cross Border Power Connectivity Initiatives

Regional grid interconnections gaining momentum to improve energy access, reliability and power exchange.



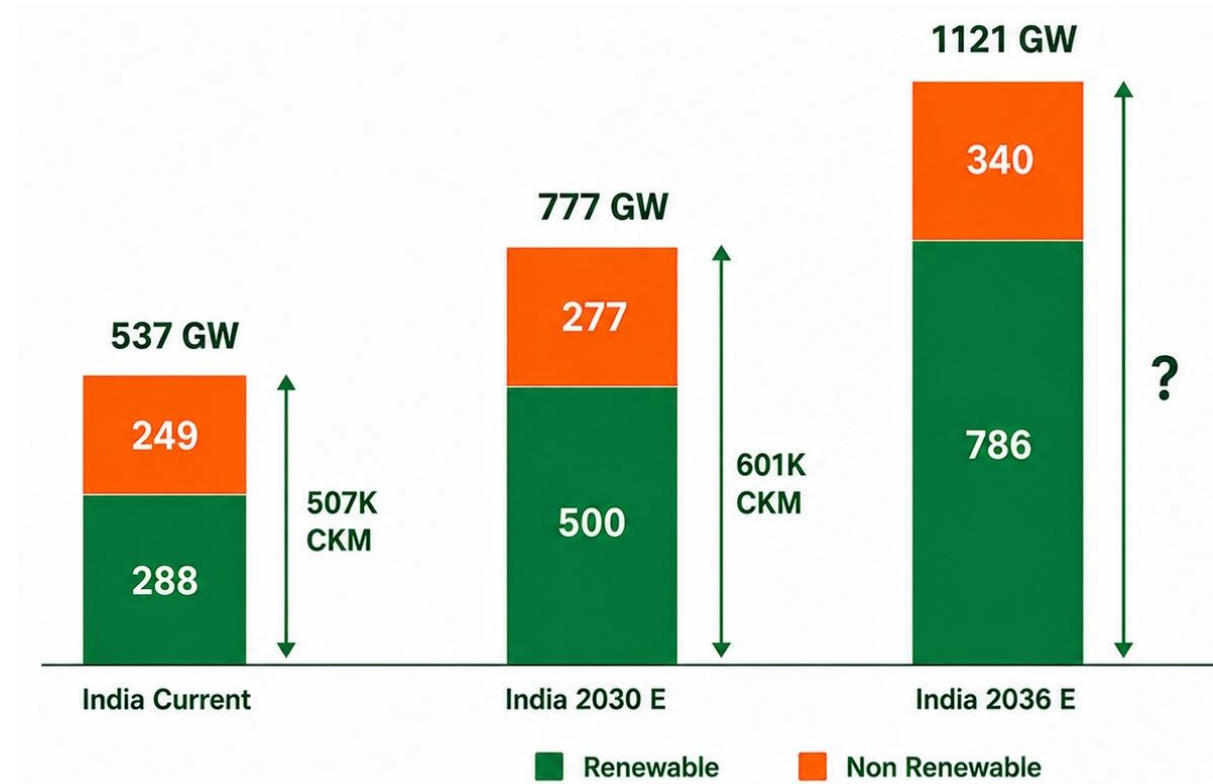
GLOBAL

# India – A multi decade T&D growth story

- An Average Indian consumes roughly 1,538 kwh (units) of electricity per year, which is **less than half of global average**.
- India is ranked around **100<sup>th</sup> position in per capita power consumption**, while being the 6<sup>th</sup> largest economy.

## A look at India's Power generation and associated TL / SS growth:

- There is no Transition without Transmission.
- Renewable energy needs more robust / longer / smarter grid network.
- There is expected investment of more than INR 9 lakh crore by 2032.



Source : Compiled & derived from CEA and NEP (volume 1 & 2) & other official sources

## Core Capabilities

- Integrated EPC and manufacturing capabilities
- Proven execution across transmission lines and substations
- Inhouse Design & Engineering and testing Facility.
- Global Presence and experience.
- Increased capacities.
- Robust financials.
- Strong customer relations.

## GROWTH through

### Conventional business

- ✓ Grid additions in India to connect the increasing volumes.
- ✓ More renewable share demanding longer and smarter grids.
- ✓ ICB (MDB funded) market prominence in Africa, SAARC etc.

### New-age requirements

- ✓ HVDC Transmission lines.
- ✓ HTLS conductors.
- ✓ Supply of manufactured products to developed economies.
- ✓ Power Infra for data centres.
- ✓ BESS EPC.

### Diversification

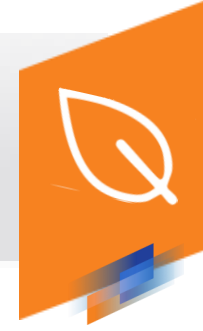
- ✓ Railway opportunities (India / Africa)
- ✓ Civil Infra (Tunnels / Bridges / Cooling Towers)
- ✓ Solar EPC (mainly Intl)
- ✓ Pole & Lighting (vast product range)

Positioned at the intersection of infrastructure, energy transition and digitalisation trends

# Striving for Global ESG standards

## Environment

- Focus on reducing environmental impact through efficient use, recycling, and reuse of resources
- Sustainability embedded across operational processes



## Social

- Initiatives in healthcare, education, rural development, and skill development
- Partnerships with credible NGOs for effective social impact
- Strong emphasis on gender diversity and women participation



## Governance

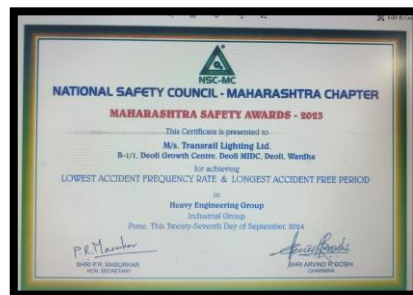
- Robust corporate governance framework rooted in transparency and accountability.
- Policies aligned with long-term sustainability, reliability, and ethical conduct



Transrail is committed to building stronger communities through sustainable action, empowering lives through initiatives focused on healthcare, education, sanitation, and inclusive growth.



PGCIL-WR II  
Appreciation  
Zero Accident



Maharashtra  
Safety Award 2023  
Lowest accident  
rate

- Transrail actively undertakes community development initiatives focused on inclusive growth and sustainable development in the regions where it operates.
- Transrail contributes towards education, healthcare, sanitation, and infrastructure development for local communities around project and plant locations.
- Regular health camps, awareness programs, and community welfare activities are conducted to improve the well-being of nearby communities.

We firmly believe in giving back to society and we are actively contributing to the well-being of the communities we serve through two flagship programs of a CSR initiative called “Transrail Arogya” and “Transrail Saksharta”.

## आरोग्य Healthcare



- **240** Specially Abled children & adults supported



- **4,095** cataract surgeries
- **11,070** Eye screening
- **143** Cancer treatments
- **7,642** Free spectacle support to the patients
- **60,107** Free medical treatment & services provided General medical treatment
- Initiation of free eye care screening in Jharkhand

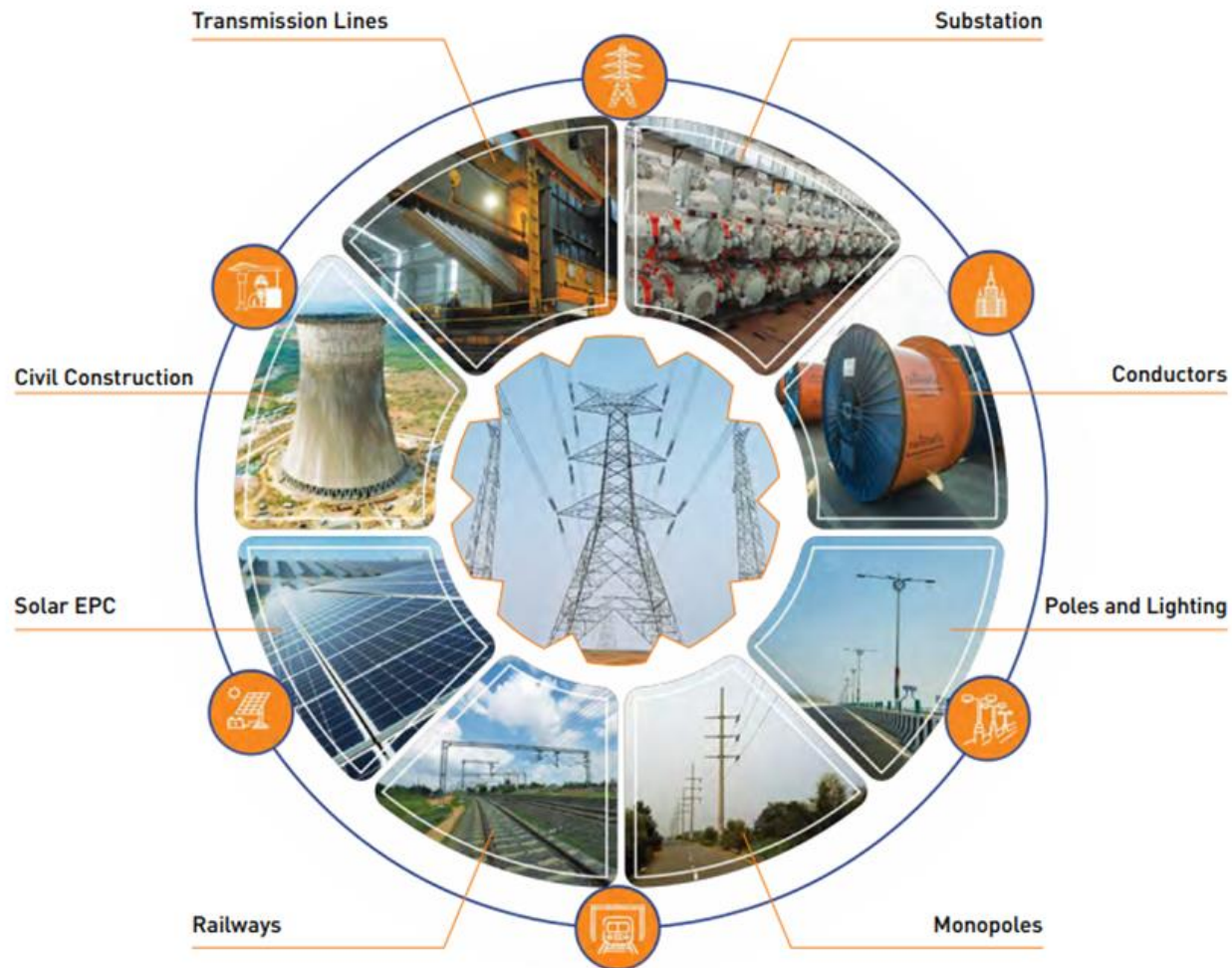


- **7,643** Educational Material support to children in schools
- **16,263** Children benefitted with educational support (Digital learning, essential learning materials, water facility, sanitation and STEM labs)

## शिक्षा Education



- **926** continuing skill training course in two center on BFSI, Tally and BPO& Retail
- **4,000** Tree Plantation



# Thank You

## Corporate Office

### Transrail Lighting Limited

A Wing, 5th Floor, Fortune 2000,  
BKC, Bandra East, Mumbai – 400051,  
India

## Investor Relations:

**Manasi Bodas**

[investor.relations@transraillighting.com](mailto:investor.relations@transraillighting.com)

[www.transrail.in](http://www.transrail.in)

**CIN: L31506MH2008PLC179012 | NSE : TRANSRAIL | BSE : 544317**